

**NATIONAL RIVERS AUTHORITY
SOUTHERN REGION**

**Presentation on
RIVER CATCHMENT MANAGEMENT PLANS**

Howard Humphreys 1990

National Rivers Authority

Guildbourne House
Worthing

Please return this book on or before last date shown below.
Renewals can be obtained by contacting the library.



ENVIRONMENT AGENCY

NATIONAL LIBRARY &
INFORMATION SERVICE

SOUTHERN REGION

Guildbourne House, Chatsworth Road,
Worthing, West Sussex BN11 1LD

ENVIRONMENT AGENCY



061973

**NATIONAL RIVERS AUTHORITY
SOUTHERN REGION**

River Catchment Management Plans

NRA Functions

- i) - Environmental Protection and Improvement
- ii) - Water Resources
- iii) - Flood Defence

NRA Aims Relating to Functions

- i) - Control of Water Pollution
 - Fisheries
 - Amenity and Recreation
 - Wildlife, Landscape, Archaeology
- ii) - Assess, Manage, Plan and Conserve Water Resources
 - Maintain and Improve Water Quality
 - Navigation
- iii) - Effective Flood Defence
 - Flood Forecasting and Warning

Functions and aims linked through catchment use.

**NATIONAL RIVERS AUTHORITY
SOUTHERN REGION**

River Catchment Management Plans

- Broad, overall plan for a catchment
- Will assist in resolving current problems
- Will provide base for avoiding problems in the future

**NATIONAL RIVERS AUTHORITY
SOUTHERN REGION**

River Catchment Management Plans

NRA FUNCTION : Environmental Protection and Improvement

CATCHMENT USE : Amenity and Recreation

EPI OBJECTIVES : To maintain appropriate water quality to prevent public nuisance from disease, smell, visual

To maintain safe and easy access to certain river reaches

ENVIRONMENTAL STANDARDS

: Water Quality

: Water Quantity

: Habitat

DATA TO ASSESS CURRENT CONDITION

: Maps	Other Information
Recreation and	- water quality
Amenity sites	- low flows

DATA TO ASSESS FUTURE PLANS

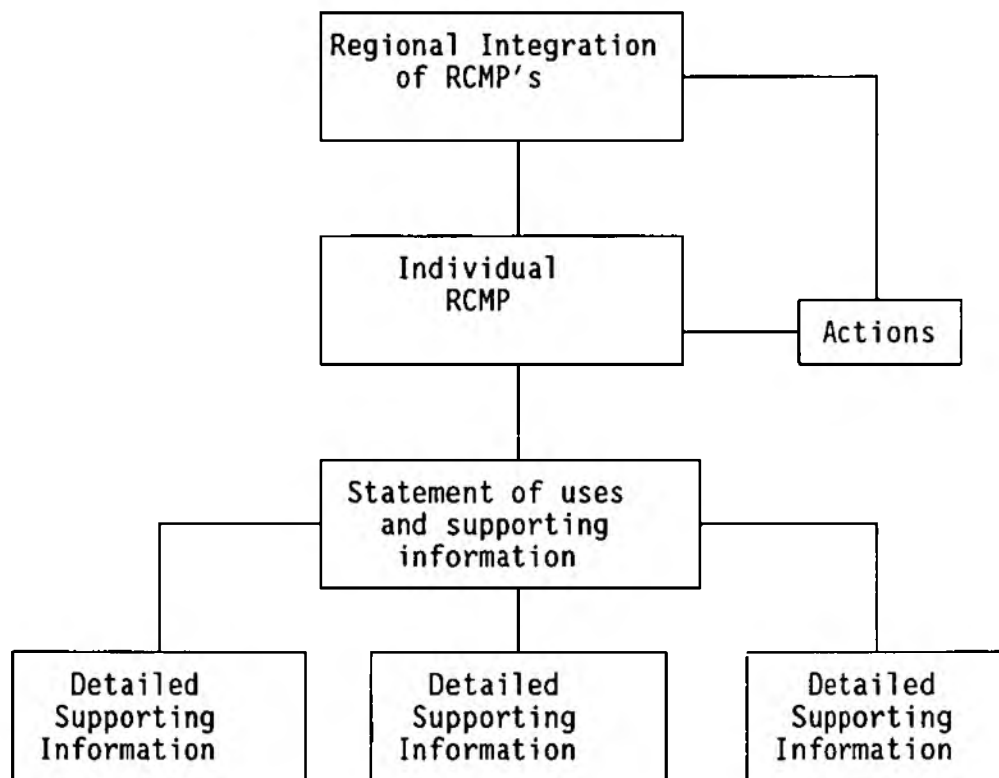
: Current problems

: Possible new sites

: Proposed discharges etc.

**NATIONAL RIVERS AUTHORITY
SOUTHERN REGION**

River Catchment Management Plans



**NATIONAL RIVERS AUTHORITY
SOUTHERN REGION**

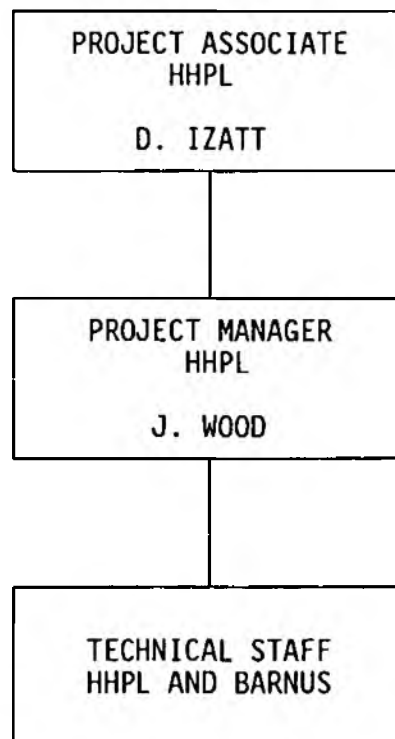
River Catchment Management Plans

1. Liaise with NRA staff and other organisations in order to:
 - define catchment uses
 - define appropriate objectives
 - define appropriate standards
2. Field visit to ascertain visual impression of the catchments
3. Define data requirements
4. Collect data and build GIS database
5. Evaluate data and define targets
6. Define problems
7. Develop solutions
8. Prepare RCMP's Phase 1

**NATIONAL RIVERS AUTHORITY
SOUTHERN REGION**

River Catchment Mangement Plans

PROPOSED PROJECT ORGANISATION



**NATIONAL RIVERS AUTHORITY
SOUTHERN REGION**

River Catchment Management Plans

Recent HHPL and Barnus Experience.

- Low Flow Alleviation Study for NRA Welsh Region
- Low Flow Alleviation Study for NRA Severn Trent Region

Both Projects have involved:

- Liaison with NRA
- Environmental Assessments
- Engineering Studies

**NATIONAL RIVERS AUTHORITY
SOUTHERN REGION**

River Catchment Management Plans

Points for Discussion

- Costing of solutions
- Benefit/cost analysis of solutions
- Analysis of data eg. low flow indices
- Extent of plan eg. litter
- Choice of GIS
- Costing of Phase II work
- Preliminary searching for information for the proposal