

EA-Southern Box 3



ENVIRONMENT AGENCY

SOUTHERN REGION
**ACTION PLAN
FOR RECREATION**

2000/01 – 2004/5 MAY 2000





EA-Southern Box3



ENVIRONMENT AGENCY

NATIONAL LIBRARY &
INFORMATION SERVICE

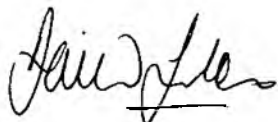
HEAD OFFICE

Rio House, Waterside Drive,
Aztec West, Almondsbury,
Bristol BS32 4UD

FOREWORD

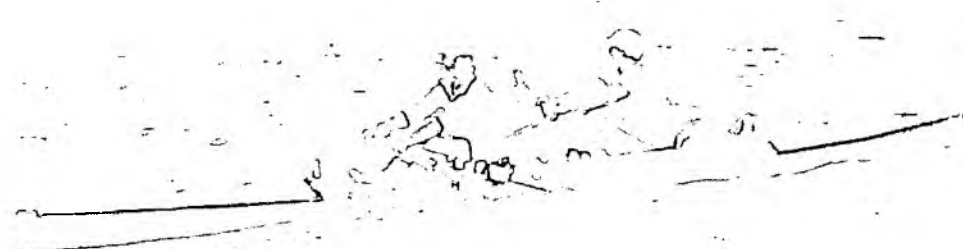
Two years ago the Environment Agency launched a consultation document, Water Related Recreation Strategy for the Southern Region: a strategy produced in partnership with Sport England. This was the first time we had produced such a document and we were encouraged by its reception amongst the sport and recreation community in the Region.

This Recreation Action Plan is our response to the many comments and contributions made during the consultation process, both from external organisations and within the Agency itself. We intend this Plan to guide our own recreation work over the next five years and to demonstrate our commitment to delivering the Agency's recreation duties. Many of the actions identified in the plan are dependent on successful collaboration with other organisations involved in recreation provision and management. We have worked well with many of you in the past and look forward to continuing to improve water based recreation opportunities with you into the future.



David Jordan

Regional Director
Environment Agency
Southern Region
September 2000



ENVIRONMENT AGENCY



074151

CONTENTS

Page	Page
Foreword1	Themes and Priorities5
Introduction2	Conclusion6
The Consultation Process2	The Action Plan Tables7
Delivering Recreation in Southern Region.....5	Abbreviations and Glossary.....17

1. INTRODUCTION

Environment Agency - a better environment in England and Wales for present and future generations.

The Environment Agency is one of the world's most powerful environmental watchdogs, regulating across water, land and air. Also included in the Agency's role are duties for recreation set out in the Environment Act 1995. The Act requires the Agency to promote, where desirable, the recreational use of all inland and coastal waters, and associated land. When carrying out its operational work, the Agency has a duty to preserve public access to places of natural beauty and heritage interest. It is also charged with making best recreational use of land and water under its control.

In February 1998 the Environment Agency and its partner, Sport England, launched a 'Water Related Recreation Strategy for the Southern Region', covering Kent, Sussex, Hampshire and the Isle of Wight. This document provided a complete picture of recreation in the Region on and around inland and coastal waters. The strategy set out a number of principles and recommendations for increasing provision of both formal and informal recreation and for improving the way we and other bodies in the region manage that provision. The challenge for the Agency and other organisations is to promote a level of recreational activity, which can be sustained by the natural environment.

This Action Plan document has been developed as the first stage in implementing the recommendations of the Water Related Recreation Strategy and is based on consultation within the Agency's Southern Region and with many external organisations involved in recreation provision and management.

2. THE CONSULTATION PROCESS

Between February and June 1998, the Agency consulted widely on the draft strategy. Formal responses were received and a series of consultation workshops were held across the region. An analysis of both the formal responses and workshop outcomes follows:

Formal Responses

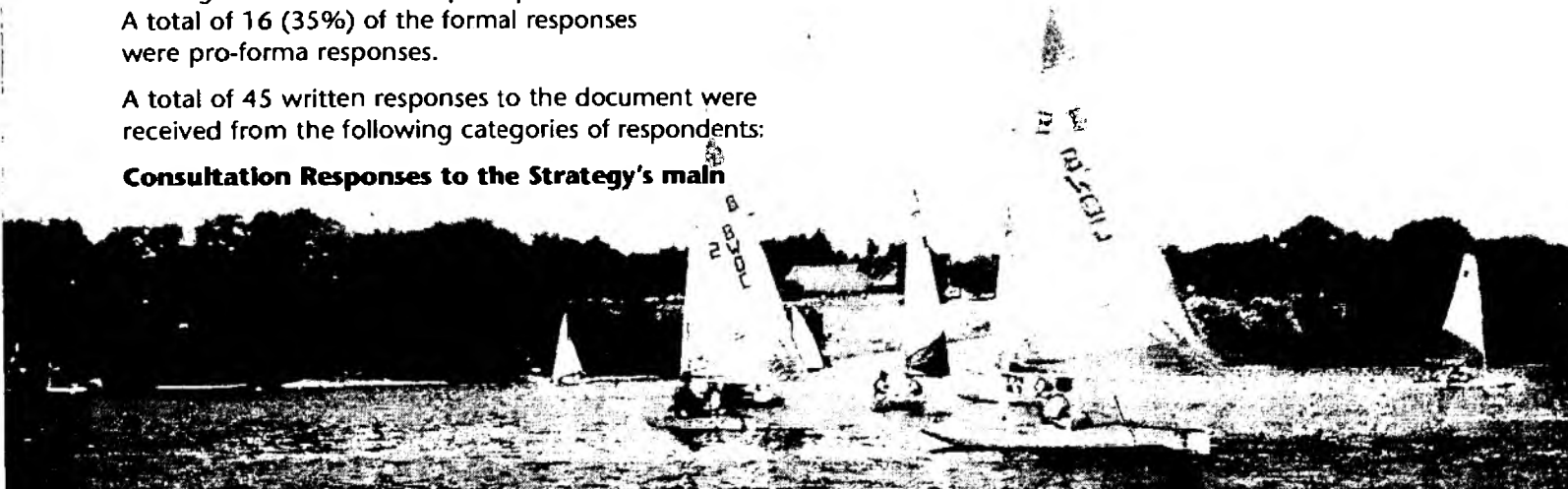
The majority of responses were of a general nature, although some dealt with sport specific issues. A total of 16 (35%) of the formal responses were pro-forma responses.

A total of 45 written responses to the document were received from the following categories of respondents:

Consultation Responses to the Strategy's main

principles and recommendations

The draft strategy set out a number of issues common to many recreation activities and proposed guiding principles and recommendations addressing these issues. Most of the consultation responses received related to these general principles although some representations were also concerned with individual activities.



Category of Respondent	Number of Responses	Percentage
Local Authority	19	42%
Sports governing body	11	24%
Recreation club/association	4	9%
Water activity centre	3	7%
Individual recreation user	1	2%
Other	7	16%
Total	45	100%

Fig.1: Categories of written responses received

A. Sustainability and the Balance between Conservation and Recreation

Thirteen percent of respondents felt that it was important to balance recreation and conservation interests and that a sustainable approach to recreation, its promotion and management was appropriate. A further 6% felt that economic and social factors needed to be considered. There was support for the strategy recommendation to promote research into the environmental impacts of recreation and to develop best practice management techniques as a means of protecting the environment.

B. Water Quality

The Environment Agency has a regulatory role for water quality and because of this role many respondents to the draft strategy highlighted issues relating to the quality of recreational waters in the region. More than 40% of respondents had concerns about the need for improved sewage treatment, the risks of infection to which recreational users are exposed on some waters and the threat to water quality from farm run off and other non-sewage related pollution. The Agency, as industry regulator, is continually working with the water companies to achieve higher standards of water quality and much has been achieved in this area already. The AMP3 process (the next round of environmental improvements that will have to be provided by the water companies) will lead to further improvements in water quality to meet EU Directive standards and recreational waters becoming cleaner and safer over time. There are currently no statutory water quality objectives for recreational waters, other than bathing waters. This issue was raised during the consultation workshops where some users felt that all water recreation participants should be lobbying Government to establish such objectives as

a means of achieving cleaner waters for recreation.

The consultation process highlighted support for the strategy recommendations to provide clear information about water quality at recreational sites and to encourage users to act responsibly about litter and possible pollution associated with their own sports. As the Agency's own water quality responsibilities do not extend to public health matters, it is essential for the Agency to work with the relevant authorities on these issues that are of concern to recreation users and providers.

C. Water Safety

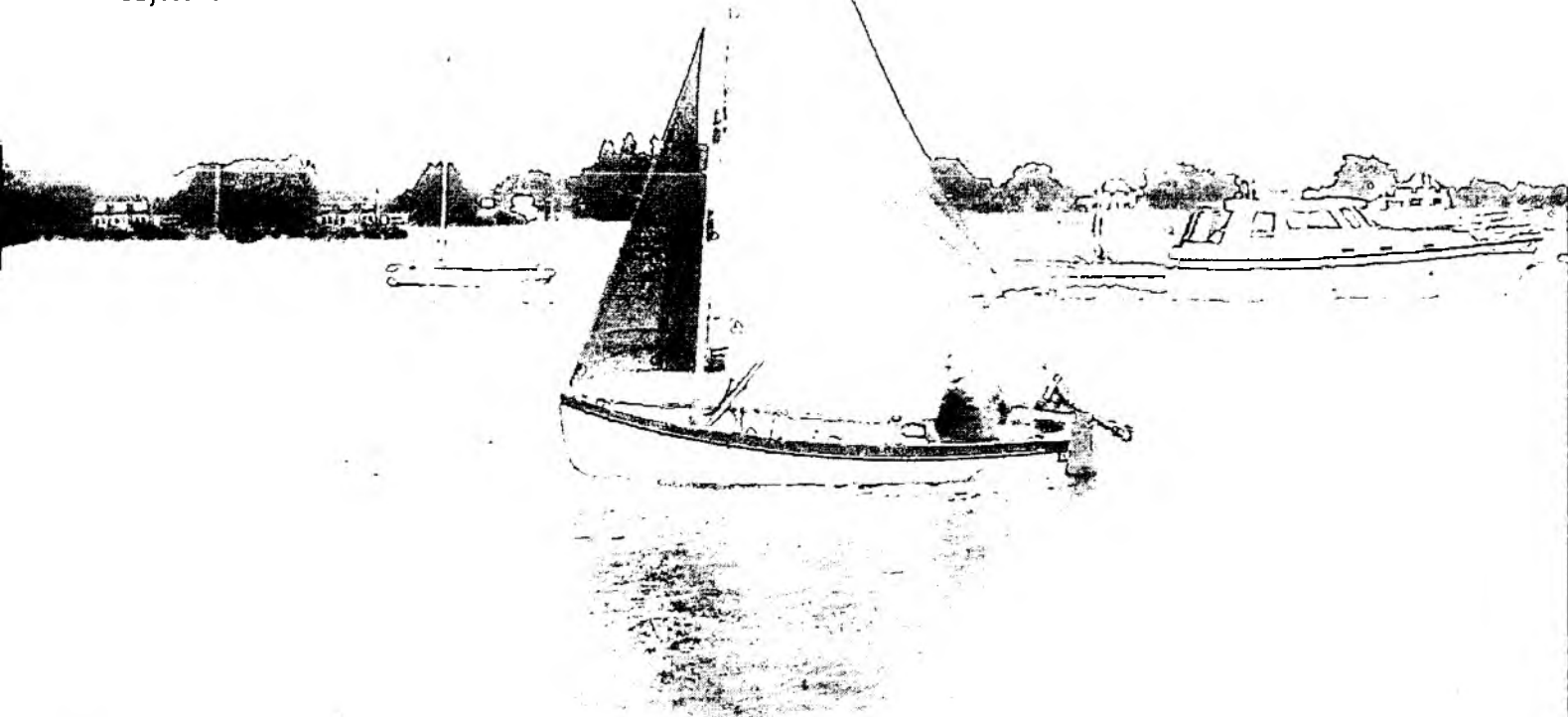
Thirty one per cent of replies highlighted issues concerning the safety of participants in water related recreation. The strategy recommendations for addressing these issues centred on information and awareness raising initiatives. Those responding to the consultation supported this approach and appropriate proposals have been incorporated in the Information and Communication section of the Action Plan tables.

D. Access

Access to various types of land and water for a range of recreational pursuits was mentioned in 62% of responses. In addition, some respondents cited access issues for specific sports or at specific sites. Their recommendations for better access identified particular areas where greater provision was needed and in general went beyond the recommendations of the draft strategy. It was clear that many of those responding had direct experience of these issues and were working to resolve them.

E. Access To Water

Access to coastal waters was an issue, with a shortage of useable slipways in some areas being the



main restriction on recreational use. On some navigable rivers, a shortage of launching sites for small craft was identified. Respondents taking part in canoeing or rowing felt that these activities would benefit from more access to the Region's stillwaters such as reservoirs and gravel pit lakes – as these provide suitable waters for training and novice paddlers or rowers.

F. Access To Dry Land

There were a number of varied issues involving land-based activities with a few common themes emerging. Of particular relevance to the Agency were references to cycling, riding and walking on waterside routes. Issues raised included concern about misuse of rights of way, conflict between walkers and cyclists, the need to improve the footpath network, shortage of waterside bridleways and the need for more cycle routes. In the Action Plan, where the opportunity exists, proposals are aimed at addressing these issues. Particularly where the Agency, through land ownership or control, can influence the provision of facilities and can, through better management, help to reduce conflict.

G. Information and Communication

Many respondents felt that communication and information issues were central to promoting provision and better management of water related recreation and to reducing areas of conflict. Thirty five per cent of replies stated that more could be done to promote better communication between different user groups in order to minimise conflict and promote joint working. In addition 31% felt that more initiatives relating to recreation and safety information were needed and 35% of responses received stated that more could be done to educate visitors and recreational participants about wider environmental or recreational issues. These views largely echoed the recommendations of the draft strategy.

Consultation Workshops

In March 1998, we held three Recreation workshops across the Region to discuss the draft strategy and its recommendations. The workshops, held at Bewl Water, Eastbourne and Southampton were attended by more than 80 representatives from over 60 organisations in the voluntary sector, governing bodies and local authorities.

After presentations from speakers involved in management of the Region's water based recreation, various issues and possible solutions around the following themes were discussed: **Information, Communication and Water Safety, Access and Management, and Sport and the Environment.**

Not surprisingly, participants in all three workshops raised broadly similar issues under the theme headings, building on many which had already been identified in the draft strategy. These included user conflict and lack of awareness of others sports and environmental issues, poor quality information relating to a range of recreation issues and a general shortage of quality access to coastal waters. They also came up with a series of recommendations for action. Again, these were similar in all three workshops with representatives wanting to see initiatives on the promotion of water quality information; better communication between participants in different sports and the promotion of good practice management techniques.

Summary of Consultation Process

The consultation process resulted in some very detailed contributions from a number of parties and more general comments from many others. We were impressed by the interest shown in the strategy and pleased that many of the responses endorsed the sentiment of the strategy and reflected our own views on the best way of tackling some of the major issues associated with water sports in the Region.

In very few instances did respondents feel that the strategy had got it wrong. Where this was apparent it was usually in relation to specific sports, where participant groups or governing bodies felt that the draft strategy had misrepresented issues relating to their sport or had failed to give the sport significant attention in the document. The errors and omissions highlighted in this way may not be amended until the strategy itself is revised in five years time. However, we have attempted to address some of these sport specific omissions through this Action Plan, which is the Agency's response to the strategy consultation process.

In preparing the Action Plan, all of the consultation responses were taken into account and many of the issues and proposals raised are reflected in the tasks set out in the Action Plan tables. In compiling the tables we have attempted to balance the issues raised with the desire to produce a realistic deliverable action plan for the Agency and others. Many of the proposed projects are included because there is clearly scope for the Agency to deliver the project as the lead body or major partner. Other projects are included because the consultation process indicated that these were of key significance in the Region and as such should be highlighted to all those with an interest.



3. DELIVERING RECREATION IN SOUTHERN REGION

The main purpose of this plan is to guide our own work and that of our partners over the next five years and to achieve real lasting improvements to water based recreation in the Region.

Delivery of this Action Plan will be co-ordinated by staff with recreation responsibilities. However, many of the actions in the tables will depend on successful joint working between Agency functions and partners.

The plan covers the period 2000/01 up to the end of 2004/05. The programme of projects will be reviewed annually and where necessary updated to take account of revised budgets, changing National priorities and external factors that may affect the programme.

The Recreation Action Plan is linked to other processes by which the Agency plans and carries out its business. These processes include LEAPs (Local Environment Agency Plans) and the Agency's Regional Business Plan. Many of the actions identified will be included in LEAP documents and the Action Plan tables below reflect the same key drivers as the Region's Business Plan. Further, external drivers may also be indicated in the tables.

Resources

In Southern Region, the recreation staff resource is mainly spread among multi-functional staff (10) in Areas, with also one full time dedicated recreation post at the Regional Office.

The Agency's recreation work is supported in 2 ways. The main source of funding is Grant-In-Aid (GIA) from the DETR currently standing at £150K for Southern Region for the period 2000/2001. The Agency seeks to make best use of this working budget by investing in collaborative projects with partners which often results in total project expenditure far exceeding the Agency's own contributions. Secondly, enhancements to recreation provision and other benefits are frequently achieved through the spend of other functions. For example, a capital scheme to renew a sea defence wall may result in an upgrading or new provision of a recreation facility such as a slipway or walkway.

Recent Recreation Achievements

Before the launch of the draft strategy and during the consultation process, the Agency has continued to deliver many successful recreation projects, some with external partners. Many recreational enhancements originated on the back of capital schemes undertaken by the Agency's Flood Defence or Water Resources departments.

We have continued as major funding partners in a number of Countryside and River Valley Projects across the region. Many of these projects include recreation in their remits. In Sussex, the Western Rother has been the focus of a scheme promoting access to the river valley by public transport for a series of country walks. On the Isle of Wight, the Agency has collaborated with the Island's AONB project and others to improve access to the Island Chines by providing access paths, secure cliff

top cycle parking, information boards and generally cleaning up the sites. This project was recently awarded an Open Space Management Award by the Institute of Leisure and Amenity Management, (ILAM). On the river Medway, we have supported various river users by improving and creating new facilities; and at our own site at Sluice Weir we have built a new canoe channel as part of a scheme to renew the weir and sluice gates.

4. THEMES AND PRIORITIES

The Action Plan is organised into a number of themes to reflect priority areas of work determined by the Strategy consultation process and by the Agency's National Recreation Action Plan. In the tables, projects have been given a suggested priority status: 1, 2 or 3.

This is intended as a guide for allocating time and resources to projects. Our main efforts will be first directed towards delivering the highest priority projects, (priority 1's) during the next three years.

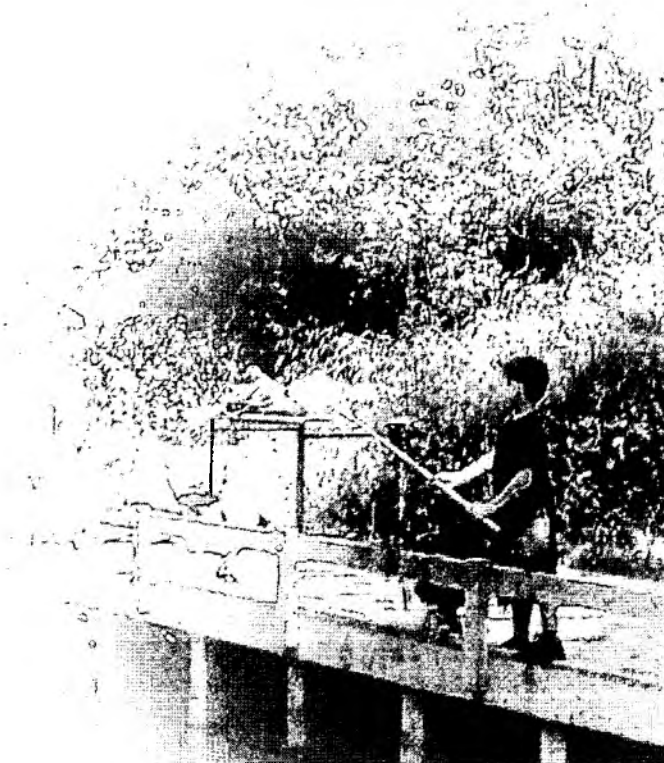
BACKGROUND TO THEMES

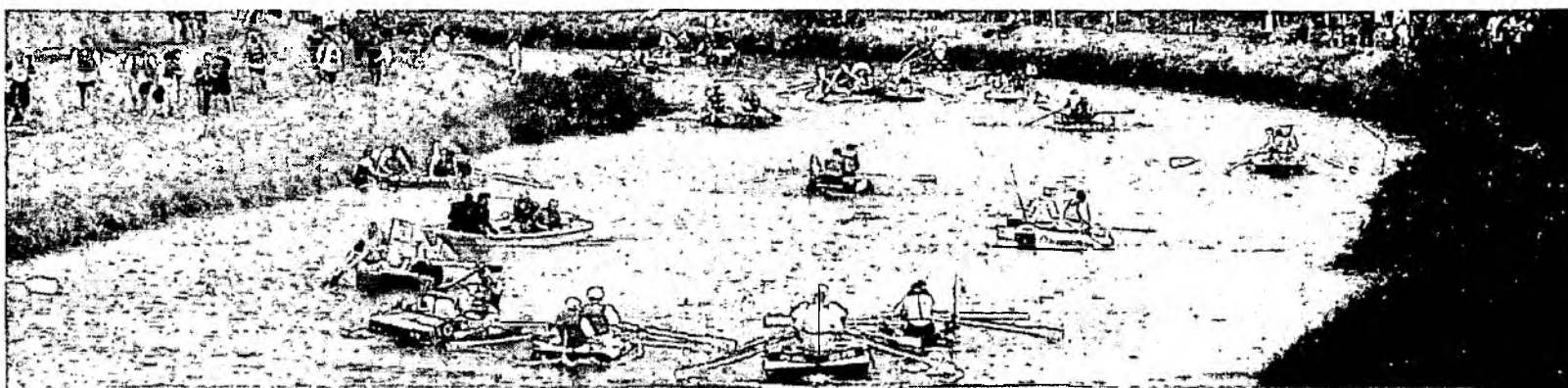
A: Agency Sites and Works

The Agency owns more than 500 sites in the Region. Many of these are small operational sites with no recreation or conservation interest and little potential for enhancement. There are however, more than 70 sites of recreation value, ranging in size from a short stretch of footpath on Sheerness Sea Defences to the 60 hectare site of Park Wood in East Sussex.

The Code of Practice on Conservation, Access and Recreation: a guidance document issued by Ministers to the Agency and water companies in England, sets out our responsibilities towards land in our ownership. We need to assess the suitability of land for different uses in respect of access, recreation and conservation and to draw up and implement management plans for our sites where appropriate.

The Action Plan highlights the most significant of these sites and indicates where sitemanagement plans are to be prepared and implemented or reviewed.





W: Access to Water

These projects are about increasing or improving launching sites on coastal or inland waters across the Region. In Sussex, in particular, there are limited opportunities for boat launching and those that exist are invariably available for only a few hours in each tidal cycle. A number of potential coastal slipway projects have been set out in the Action Plan and these will be investigated further to determine an appropriate level of Agency involvement. On our rivers, opportunities have been identified to improve access to the water for small boats, canoeists and rowers.

D: Access to Dry Land

Walking and increasingly cycling are significant pastimes and the attraction of both groups of users to the waterside environment means that the Agency needs to consider how to ensure that these activities are catered for in the most appropriate locations. Proposals under this heading include establishing an effective way of working with Sustrans, improving and increasing waterside footpaths along some of the Hampshire streams and working with user groups on links with the bridleway network. The Agency also needs to take account of Government proposals to provide new access to the countryside and in the short term we will work with the Countryside Agency to provide relevant information as part of the development of this initiative.

C: Information/Communication

These projects have arisen out of the Strategy consultation process. The vast majority of the organisations consulted identified information about water based recreation sites, activities and user groups as an issue in the Region. The lack of quality information, covering a wide area and range of activities, is thought to result in some sites being over used while others are not at all exploited. Overcrowding at popular recreation spots can spoil visitors' enjoyment and in addition, the environment can be damaged, sometimes significantly. By working with others to increase the range and quality of information about recreation opportunities, we will be helping to fill gaps in existing provision and promote knowledge and understanding of water related recreation among the wider public – both residents and visitors to the Region.

Poor communication between participants in different watersports and a lack of understanding about other sports are thought to be the main causes of conflict between different recreational activities. Actions under this theme aim to improve communication between user groups and promote increased awareness of the needs of different sports. By promoting codes of

practice – both individual and multi sport – and by supporting good practice management techniques, conflict between recreation users should be reduced. Those managing sites where conflict occurs should be encouraged to seek out solutions to problems rather than resorting to banning particular sports and user groups in favour of others. Illegal activities like motorcycles scrambling on flood banks or jet skiing off bathing beaches can be a problem on some sites. Local authorities, site managers and other relevant organisations should work together to tackle such issues by identifying and promoting suitable locations where these activities can be enjoyed legally.

T: Target Groups

Research and our own consultation exercise shows that some groups are not always catered for. People with disabilities, young people and families are just three groups that have different needs and expectations from the average water based recreation participant (single male aged between 20-35). Several projects have been identified to help us meet our recreational responsibilities for these groups. We will work with Sport England, the Countryside Agency and Local Authorities to deliver our objectives in this area.

E: Environment

Concerns about the environment and potential conflicts between recreation and conservation interests were a feature of the recreation workshops. Some of these concerns led to suggestions for research projects which we have identified in the Action Plan tables and will first raise at a National level to determine an appropriate way forward. Other projects under this theme relate to best practice management techniques on sensitive sites or with sensitive sports. Canal restoration projects in the Region are also included in this section.

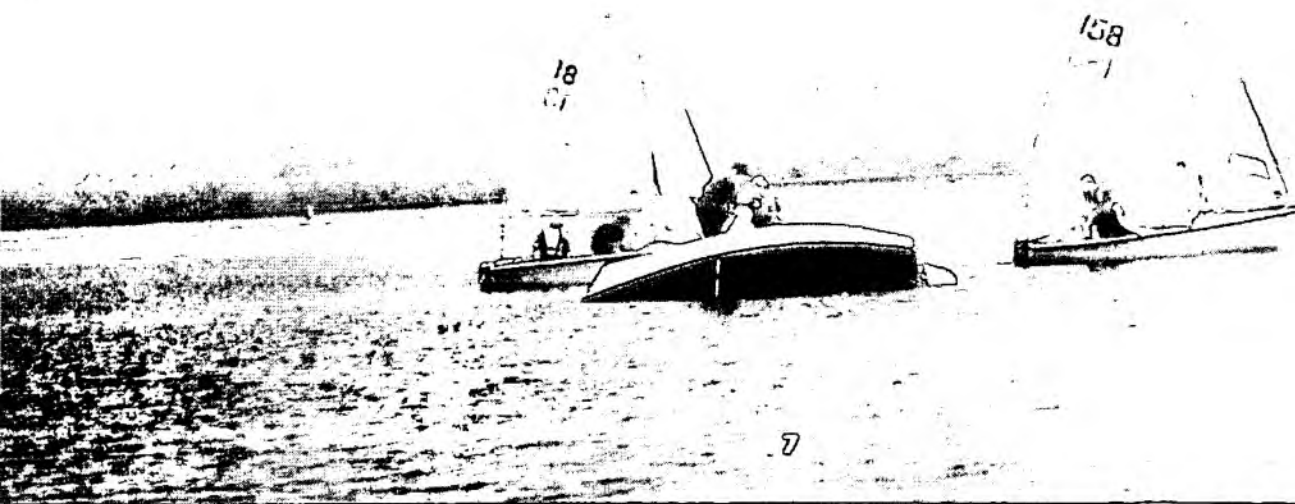
5. CONCLUSION

This Action Plan outlines our response to the comments and contributions received on the Southern Region's Water Related Recreation Strategy. It will guide both our own work and our collaboration with other bodies; and demonstrates our commitment to our recreation duties. Many actions require successful partnerships, and the allocation of additional resources; this will involve developing close collaboration to provide successful delivery of the Plan's objectives. We will continue to work with Local Authorities, clubs and governing bodies to provide facilities and management of resources, within the region.

THE ACTION PLAN TABLES

Theme: A: Agency Sites (Sussex Area)

LEAP Area	No.	Proposed Projects and Actions	Key Drivers	Priority	Lead body & Partners
Adur/Ouse	A1	Management of land at Barcombe Mills a. Undertake public consultation b. Rewrite draft Site Management Plan c. Implement agreed plan d. Create disabled access path e. Develop and implement interpretation plan for site f. Continue to work with BCU to improve canoe access	Statutory duty, Integrated River Basin Management (IRBM), Regional Recreation Strategy, National Policy	1 1 2 2 1 1	Ouse Valley Project , local authorities, user groups and BCU Parish Council
Adur/Ouse	A2	Management of land at Ferring Rife a. Review, revise and implement site management plan b. Develop and implement interpretation plan for the site	<i>As above</i>	1	Sussex Area Team
Cuckmere	A3	Management of Park Wood a. Finalise site management plan in 99/00 b. Renew management agreement with ESCC c. Continue to support ranger d. Investigate use of Park Wood for riding e. Explore opportunities for linking Park Wood with Cuckoo Trail	Statutory duty, national policy, Regional Recreation Strategy	1 1 1 2 2	Sussex Area Team East Sussex County Council, British Horse Society, SUSTRANS, Park Wood Ranger
Arun	A4	Management of Rowner Mill Site a. Develop interpretation plan	<i>As above</i>	2	Sussex Area Team
Arun	A5	Management of Pagham Harbour a. Finalise and sign management agreement with WSCC	<i>As above</i>	1	Sussex Area Team , West Sussex County Council
Adur/Ouse	A6	Management of Southease Road Site a. Carry out H&S audit b. Implement management plan c. Investigate opportunities for canoe access	<i>As above</i>	1 1 2	Ouse Valley Project, BCU



Theme: A: Agency Sites (Kent Area)

LEAP Area	No.	Proposed Projects and Actions	Key Drivers	Priority	Lead body & Partners
Eastern Rother	A7	Visitor Management at Rye Harbour Nature Reserve a. Review site management plan and implement changes b. Address outstanding safety issues c. Investigate desirability of additional facilities such as bird hides and shelters	Statutory duty, national policy, Regional Recreation Strategy	1 1 2	Kent Area Team with FD, Two Bays Project
Eastern Rother	A8	Royal Military Canal a. Identify need for any footpath works and programme improvements as funding allows b. Review existing interpretation on the RMC and plan for additional provision as appropriate c. Investigate canoe usage and opportunities	As above	2 2 2	Kent Area Team ESCC English Heritage BCU
Eastern Rother	A9	Rye Harbour a. Investigate opportunities to increase cycle access around the harbour b. Monitor car parking associated with use of slipway at Rye Harbour Village	As above	2 2	Kent Area Team Sustrans, user group
North Kent	A10	Land at Faversham and Seasalter Pumping Station a. Review recreation potential b. Prepare site management plan	As above	2 2	Kent Area Team
Medway	A11	Thames Tidal Scheme, Shorne Marsh a. Review recreation potential	As above	2	Kent Area Team
Medway	A12	Medway Flood Relief Scheme Sites a. Review recreation potential	As above	2	Kent Area Team
Stour	A13	Church Lane a. Review Site Management Plan	As above	2	KSCP
Stour	A14	Woodlee a. Review Site Management Plan	As above	2	KSCP
Eastern Rother	A15	Pett Pools a. Review Site Management Plan b. Investigate desirability of additional facilities such as bird hides on Agency-owned land	As above	2	RHNR, SOS, Sussex Wildlife Trust
Stour	A16	Land at Stodmarsh (NNR) a. Prepare Site Management Plan	As above	1	EN

Theme: A: Agency Sites (Hampshire and the Isle of Wight Area)

LEAP Area	No.	Proposed Projects and Actions	Key Drivers	Priority	Lead body & Partners
Test and Itchen	A17	Land at Allbrook Lock a. Establish, with Estates, future of site b. Carry out H&S audit and site management plan as appropriate	Statutory duty, national policy, IRBM, Regional Recreation Strategy	1 2	Hants & IOW Area Team
Test and Itchen	A18	Romsey Allotments a. Establish, with Estates, future of site b. Prepare site management plan if appropriate	As above	1 2	Hants & IOW Area Team
Isle of Wight	A19	Disused Railway Lines a. Review site management plan on those sections not currently managed for cycling and implement site management recommendations b. Work with IOW Council to progress Newport to Sandown cycle route	As above also the government's National Cycling Strategy	1 1	Hants & IOW Area Team, IOW Council

Theme: A: Agency Sites (All Areas)

LEAP Area	No.	Proposed Projects and Actions	Key Drivers	Priority	Lead body & Partners
All Areas	A20	Rights of Way a. Confirm all rights of way on Agency land are open and accessible b. Carry out disability audit on Agency land with public access	Statutory Duty Disability Discrimination Act	1 2	All Agency Areas All Agency Areas



Theme: W: Access to Water (Sussex Area)

LEAP Area	No.	Proposed Projects and Actions	Key Drivers	Priority	Lead body & Partners
Adur/Ouse	W1	Canoe Access on River Ouse a. Support BCU in developing Ouse Access Strategy b. Where needed act as 'honest broker' in access agreements c. Consider Southease as possible launch site (see A3) d. Support development of moorings and launch area at Tesco site, Lewes	Statutory Duty, Regional Recreation Strategy, national policy, Consultation Responses	1 2 2 2	BCU/Ouse Valley Project Sussex Area Team Ouse Valley Project/BCU
Arun	W2	Increase Access to lower River Arun a. Implement Black Rabbit Canoe Launch Scheme b. Investigate opportunities for slipways at Littlehampton c. Monitor usage at Pulborough Slip.	As above	1 1 1	Regional Team/Arun D.C. Sussex Area Team/ User gps
Arun	W3	Gloucester Rd Slipway, Bognor Regis a. Monitor condition of slipway to ensure that recreation interest does not deteriorate. (Part of Felpham FD scheme)	As above	1	Regional New Works Team/Arun D.C.
Adur/Ouse	W4	Slipways in Sussex a. Further explore the potential for new coastal launching facilities in East Sussex b. Investigate opportunities for lottery funding for (a) above	As above	1	Regional Team/ local authorities/user groups Regional Team
Arun	W5	Canoe Access on Western Rother a. Support BCU in seeking low key and limited areas to the river	As above	1	BCU/landowners/ Sussex Area Team
Arun	W6	Sub Aqua at Selsey a. Investigate development opportunities with users	As above	2	Sussex Area Team User group



Theme: W: Access to Water (Hampshire and Isle of Wight Areas)

LEAP Area	No.	Proposed Projects and Actions	Key Drivers	Priority	Lead body & Partners
Isle of Wight	W7	Isle of Wight Slipways a. Support lottery bid for new slipway at Ryde	Statutory Duty, Regional Recreation Strategy, Isle of Wight LEAP (draft)	1	Isle of Wight Council/ Region & Area team/ Vectis Boating & Angling Club
		b. Support safety improvements on 2 further slipways	national policy Consultation response	2	Isle of Wight Council/ Hants & IoW Area Team
Test and Itchen	W8	Itchen Navigation a. Support retention of sections of the navigation for rowing	Statutory Duty, Regional Recreation Strategy, . national policy	1	Winchester College/
		b. Support increased rowing on section.		2	Hants & IoW Area Team
		c. Ensure issue of future recreational use is addressed in Test & Itchen LEAP		1	Hants & IoW Area Team
Test and Itchen	W9	Woodmill Salmon Pool a. Support long term plans for development of Woodmill as a regional whitewater facility	As above	3	Southampton Unitary Authority.
		b. Ensure this issue is addressed in Test & Itchen LEAP		1	Hants & IoW Area Team

Theme: W: Access to Water (Kent)

LEAP Area	No.	Proposed Projects and Actions	Key Drivers	Priority	Lead body & Partners
Medway	W10	Facilities on Medway a. Work with canoeists to establish facility needs and incorporate where appropriate into Navigation capital programme	Statutory Duty Regional Recreation Strategy.	1	Kent Area Navigation Team/New Works/ User Groups
		b. Improve facilities for boaters in line with Navigation capital programme.	Consultation response.	1	Kent Area Navigation Team/Medway River User Group.
		c. Consider development of rowing opportunities		2	Governing body of sport/ Sport England
Eastem Rother	W11	Slipways a. Investigate usage and potential for improvements at Dymchurch Slipway as part of A259 corridor study	As above	1	Shepway District Council/ Kent Area Team
		b. Investigate usage and potential for improvements/better management at Pett		1	Kent Area FD/Regional Team/Rother D.C.
Stour	W12	Coastal Access a. Investigate demand for increased access at Dover	As above	2	Dover D.C./Kent Sports Development Unit
Stour & Medway	W13	Stillwater Access a. Support and encourage recreation on stillwaters in Medway Towns and through Medway Millennium Park Project	As above	1	Kent Area Team/ local authorities
		b. Explore opportunities for increased access and facilities at Stonar Lake (Sandwich)	As above	2	Dover D.C./User Groups/ Kent Area Team
		c. Work with local authority at Leybourne Lakes	As above	2	Kent Area Team/ Local Authorities

Theme: D: Access on Dry Land (Sussex Area)

LEAP Area	No.	Proposed Projects and Actions	Key Drivers	Priority	Lead body & Partners
Ouse	D.1	Cycling in Ouse Valley a. Support a feasibility study on cycling in Ouse Valley	Statutory Duty, national policy, Regional Recreation Strategy, Consultation Responses	1	Ouse Valley Project
Arun	D.2	Cycling in Arun Valley a. Support implementation of Arundel/Littlehampton Link	As above	1	Arun D.C./Regional and Sussex Area Team
	D.3	Park Wood Trails a. Extend use of Park Wood for riding and cycling, linking with Cuckoo Trail. (also A3)	As above	2	Sussex Area Team/ East Sussex County Council /British Horse Society
	D.4	Bridleways a. Support development of bridleway network to include more waterside routes	As above	2	Sussex Area Team/ landowner/ SDCB /User gps/BHS.
Adur	D.5	Widewater Lagoon a. Investigate opportunities for improving visitor Facilities at Widewater Lagoon. b. Investigate re-routing of South Coast Cycle Route	As above	3	Local Authorities/Adur Water Development Gp/ Residents gp/Sussex Area Team/SUSTRANS

Theme: D: Access on Dry Land (Hampshire and the Isle of Wight)

LEAP Area	No.	Proposed Projects and Actions	Key Drivers	Priority	Lead body & Partners
Test & Itchen	D.6	Hockley Viaduct a. Support the production of a site Management Plan and opening the site to further public access	Statutory Duty, National policy, Regional Recreation Strategy.	1	Hants County Council/ Hants & IoW Team.
Isle of Wight	D.7	Newport to Sandown Cycleway a. Support IoW Council in completing the whole route	As above	1	IoW Council/ Hants + IoW Team.
Test & Itchen	D.8	Itchen Navigation Paths a. Draw up a programme to improve. b. Ensure inclusion in T&I LEAP	As above	2	Hants & IoW Area Team/ landowners/County Council
Test & Itchen	D.9	Monks Brook Paths a. Support increased access along Monks Brook	As above	2	Hants & IoW Water Resources/Eastleigh B.C.
Test & Itchen	D.10	River Anton Project a. Investigate opportunity for access improvements b. Draw up project plan c. Partner the implementation of plan	As above	1	Hants & IoW Area Team/ Test Valley Borough Council
New Forest	D.11	Priestland Pond Project (Lymington) a. Partner improvement plan	As above	1	Hants & IoW Area Team/ Priestlands School/ Lymington & Pennington Town Council
East Hants	D.12	Titchfield Haven a. Investigate opportunities for increasing pedestrian access	As above	2	Hants & IoW Area Team, HCC
East Hants	D.13	Hermitage Stream a. Continue to restore stream enhancing access and environment	As above	2	Hants & IoW FD Team, Havant B.C.

Theme: D: Access on Dry Land (Kent)

LEAP Area	No.	Proposed Projects and Actions	Key Drivers	Priority	Lead body & Partners
Eastern Rother	D.14	Camber Sands Project a. Support Seasons Visitor Ranger b. Assist in development and implementation of an interpretative strategy c. Implement Guided Walks Programme. d. Implement Rye-Camber cycle route	Statutory Duty, national policy, Regional Recreation Strategy	1 1 2 2	Kent Area Team/ Rye Bay Project. Regional Team/ Rye Bay Project Two Bays Project
	D.15	Romney Marsh Projects a. Continue to develop Countryside Activities programme b. Promote recreation opportunities within A259 Roadside Corridor Project	As above	2 2	Romney Marsh Countryside Project. Shepway District Council/ Kent Area C.S.

Theme: D: Access on Dry Land (Kent)

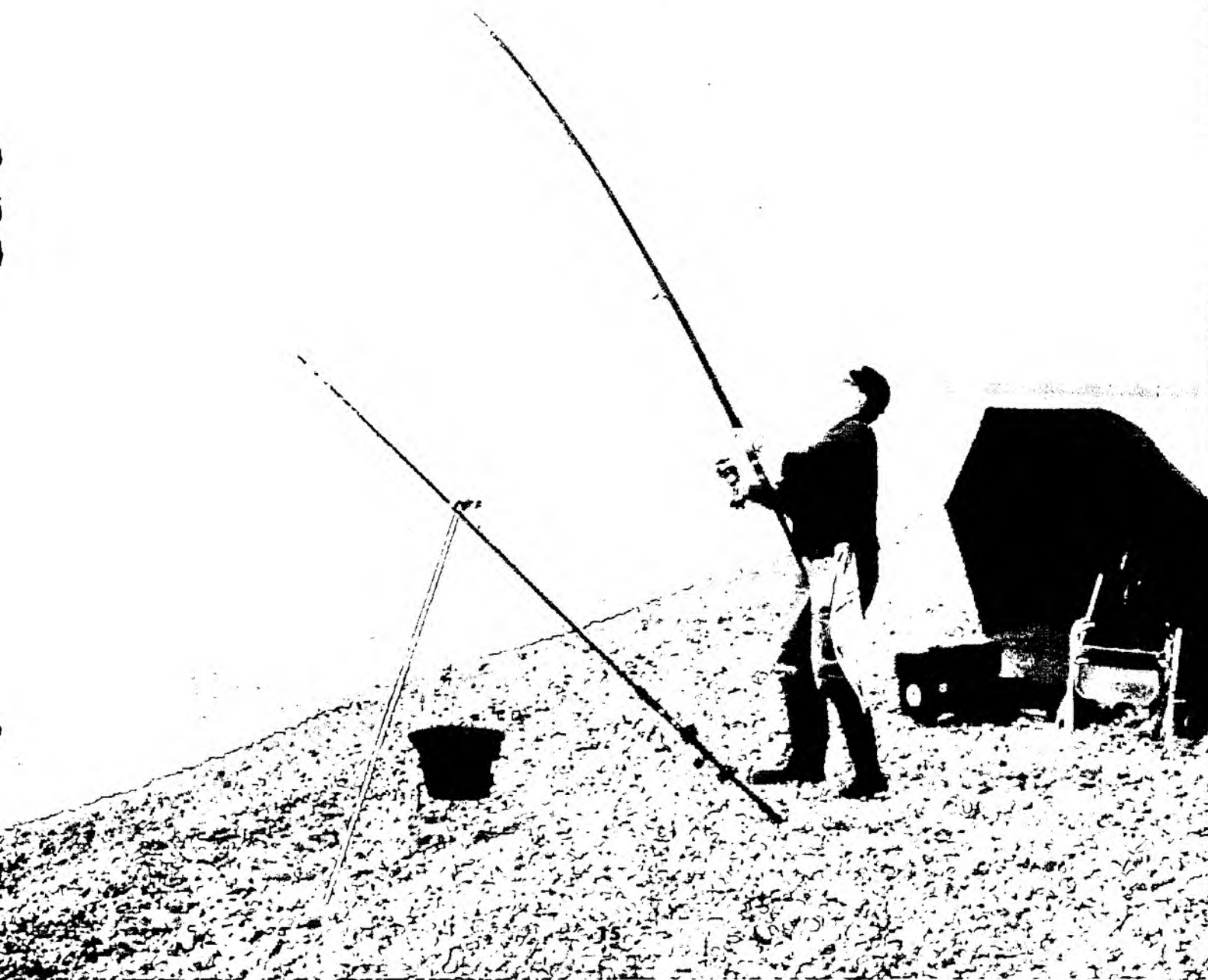
LEAP Area	No.	Proposed Projects and Actions	Key Drivers	Priority	Lead body & Partners
All	D.16	Access to the Countryside a. Support new government initiative to increase access to the countryside b. Provide information for Countryside Agency report on expanding scope of access initiative	Legislation	1 1	Countryside Agency/ All Areas and Regional Team
All	D.17	Water Related Nature Reserves a. Support provision of visitor facilities including paths for those with disabilities	Statutory Duty, national policy, Disability Discrimination Act, Regional Recreational Strategy	2	All Area Teams/ Reserve Managers/ Local Authorities
All	D.18	Riverside Walks a. Support provision and maintenance of riverside walks	As above	2	All Area Teams/ landowners/local authorities
All	D.19	SUSTRANS a. Work with SUSTRANS to develop mutual understanding of each organisation's objectives b. Where possible support SUSTRANS in the new development of the National Cycle Networks	As above	1 1	All Areas and Regional Team/SUSTRANS All Areas and Regional Team/SUSTRANS

Theme: C: Information and Communication

LEAP Area	No.	Proposed Projects and Actions	Key Drivers	Priority	Lead body & Partners
Multi	C1	Improve Access to Water Quality Information a. Support Solent Forum WQ leaflet for Solent b. Identify scope for similar leaflets across the Region c. Liaise with local authorities on production of clear water quality information at bathing beaches d. Provide information on Recreation sites to WQ function	Regional Recreation Strategy, Consultation responses, Solent Forum identified project Regional Business Plan	2 2 2 2	EPP at Region & local authorities Regional Team Regional Team with EPP Regional Team
Multi	C2	Waterborne Hazards a. Investigate need for leaflet on Waterborne hazards aimed at recreation users (possible national R&D project)	As above.	2	Regional Team/ governing bodies of sport
Multi	C3	Recreation Information for Users a. Produce Water Recreation Guide to the Region b. Produce leaflets to complement waterside walks c. Continue to develop Recreation element on Agency's website d. Consider developing River specific user guides	Regional Recreation Strategy, Consultation responses, Regional Business Plan	1 2 2 2	Regional Team/ Area Teams/ Countryside Projects National/Regional Teams Area Teams.
Multi	C4	Communication between users a. Support existing water user forums. b. Consider need for additional user forums and assist in setting up as appropriate c. Call issue driven user meetings when necessary d. Promote development and dissemination of Codes of Conduct for users e. Maintain productive liaison with main recreation bodies and implement any MOU's	Regional Recreation Strategy	1 1 2 1 1	Regional and Area Teams Regional and Area Teams Regional and Area Teams. Governing bodies/ Regional Team. Regional Team
Multi	C5	Improve Agency Recreation knowledge a. Update Recreation Database and widen usage b. All relevant staff attend national training course c. Develop series of themed roadshows to maintain and update knowledge on recreation issues d. Develop Regional policy on Recreation and Shingle Sea Defences. e. Promote R&D on Recreation on floodbanks through workshops and develop Phase II f. Support national R&D project on supply/demand scoping study	CAR Code of Practice Regional Business Plan, national policy	1 1 1 1 1 1	Regional Team All Areas Regional Team/ All Areas Regional Team Regional Team National Team Regional Team Area Teams

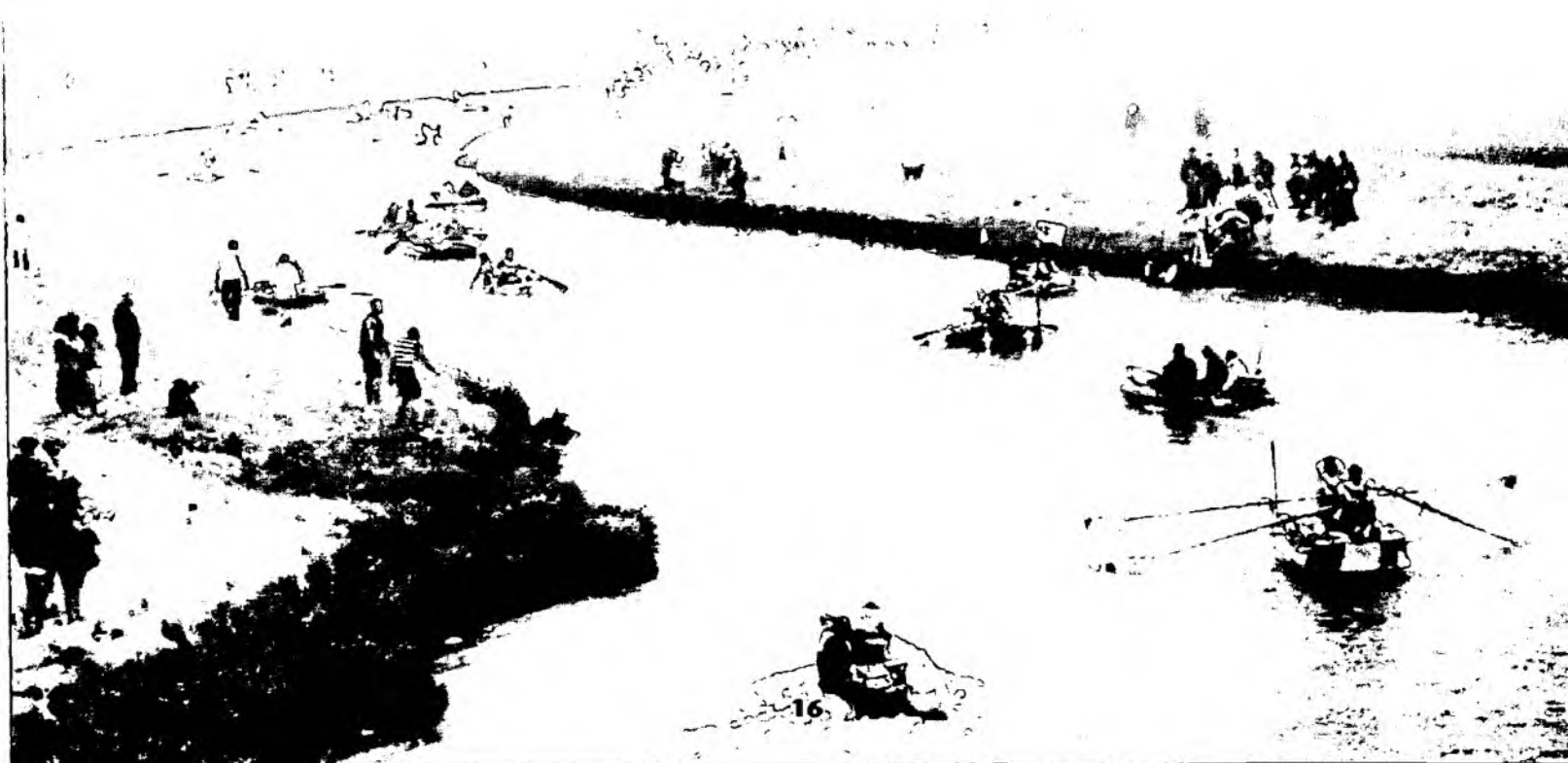
Theme: T: Target Groups

LEAP Area	No.	Proposed Projects and Actions	Key Drivers	Priority	Lead body & Partners
Multi	T1	Junior Participation in Watersports a. Encourage junior participation by promoting taster events	Regional Recreation Strategy, Consultation Response	1	Adur Watersports Users Forum/ Adur DC/ Regional Team
Multi	T2	Angling in Urban Areas a. Support restoration of Hasting Lakes. b. Support scheme at Danson Park Lake. c. Continue developing urban angling opportunities and opportunities for Juniors in Hampshire	Regional Recreation Strategy, national policy, consultation responses	1 1 1	Sussex Area Team/ Landowners Hants IOW Fisheries Team
Multi	T3	Disabled Recreation Users a. Using research outputs. Ensure Regional compliance with Disability Discrimination Act b. Promote increased opportunities for people with disabilities to participate in active recreational pursuits	Legislation, Regional Recreation Strategy, Consultation responses	1 1	Regional & Area Teams/ Sport England



Theme: E: The Environment

LEAP Area	No.	Proposed Projects and Actions	Key Drivers	Priority	Lead body & Partners
Multi	E1	Management of Personal Watercraft a) Promote use of RYA good practice guide b) Identify suitable sites for jetskis c) Where possible use Agency powers to resolve issues at problem sites	Regional Recreation Strategy, Consultation response	1 2 2	RYA/Regional Team RYA/All Areas/ Local Authorities /Port Authorities All Areas (FD)
Multi	E2	Environmental Impacts Research a) Support national research projects on environmental impacts of recreation and carrying capacity	As above	1	National Team/ British Waterways
Arun	E3	Waterway Restoration - Wey and Arun a) Establish Agency policy on restoration of Wey and Arun b) Support Wey and Arun Canal Trust in finding an environmentally sustainable future for the canal	As above	1 2	Sussex Area Team/ WACT As above
Arun	E4	Waterway Restoration - Chichester Canal a) Continue to support cultural activities on canal through Chichester Canal Society. b) Support re-opening of canal to navigation, providing mitigation works to reed beds are included	As above As above	1 2	Chichester Canal Society/ Sussex Area Team
Arun	E5	Chichester Flood Alleviation Scheme a) Ensure final scheme includes recreation proposals put forward by local authority and Area Team	As above	2	Sussex Area Teams/ Region New Works Team



ABBREVIATIONS AND GLOSSARY

AMP	Asset Management Plan
BCU	British Canoe Union
ESCC	East Sussex County Council
FD	Flood Defence
H & S	Health & Safety
IoW	Isle of Wight
LEAP	Local Environment Agency Plan
MoU	Memorandum of Understanding
NNR	National Nature Reserve
RHNR	Rye Harbour Nature Reserve
RYA	Royal Yachting Association
SOS	Sussex Ornithological Society
SDCB	Sussex Downs Conservation Board
SUSTRANS	(National Cycling Development Trust, developing National Cycle routes network)
WACT	Wey and Arun Canal Trust

SOUTHERN REGION ADDRESSES

REGIONAL OFFICE

Environment Agency
Guildbourne House
Chatsworth Road
Worthing
West Sussex BN11 1LD
Tel: 01903 832 000
Fax: 01903 821 832

HAMPSHIRE AND ISLE OF WIGHT AREA OFFICE

Environment Agency
Wessex Business Park
Wessex Way
Colden Common
Winchester
Hampshire SO21 1WP
Tel: 01962 713 267
Fax: 01962 841 573

KENT AREA OFFICE

Environment Agency
Orchard House
Endeavour Park
London Road
Addington
West Malling
Kent ME19 5SH
Tel: 01732 875 587
Fax: 01732 875 057

SUSSEX AREA OFFICE

Environment Agency
Saxon House
Little High Street
Worthing
West Sussex
BN11 1DH
Tel: 01903 215 835
Fax: 01903 215 884

ISLE OF WIGHT

Tel: 01983 822 986
Fax: 01983 822 985



www.environment-agency.gov.uk

ENVIRONMENT AGENCY
GENERAL ENQUIRY LINE

0845 933 3111

ENVIRONMENT AGENCY
FLOODLINE

0845 988 1188

ENVIRONMENT AGENCY
EMERGENCY HOTLINE

0800 80 70 60



ENVIRONMENT
AGENCY