

**POLLUTION INCIDENTS
REPORT - 1997
MIDLANDS REGION**

ENVIRONMENT AGENCY



Foreword

The Pollution Control Statistics Report 1997 provides a summary and a graphical representation of water pollution incidents information and Pollution Control work loads for 1997. The data comes from the Region's Pollution Incidents database and area pollution control statistics reports. All the graphs and tables can be obtained in electronic format from the Water Quality section at Regional Head Office. This year an annex has been produced for each area. Annex 1-4 provides a graphical representation of pollution incidents statistics in Upper Severn, Lower Severn, Upper Trent and Lower Trent, respectively.

Contents

Summary

Figures:

- 1 - The number of pollution incidents in Midlands Region, 1987-97
- 2 - Substantiated pollution incidents by source, Midlands Region, 1997
- 3 - Substantiated Category 1 pollution Incidents by source Midlands Region 1997
- 4 - Substantiated pollution incidents by type Midlands Region, 1997
- 5 - Substantiated Category 1 pollution incidents by type Midlands Region, 1997
- 6 - Substantiated agricultural pollution incidents Midlands Region, 1997
- 7 - Substantiated industrial pollution incidents by source Midlands Region, 1997
- 8 - Substantiated sewage and water industry related pollution incidents, Midlands Region 1997
- 9 - Substantiated transport related pollution incidents Midlands Region, 1997
- 10- Substantiated other sources of pollution incidents, where classified, Midlands Region, 1997
- 11- Substantiated organic waste pollution incidents Midlands Region, 1997
- 12- Substantiated fuel & oil pollution incidents Midlands Region, 1997
- 13- Substantiated chemical pollution incidents (where classified) Midlands Region, 1997
- 14- Substantiated sewage pollution incidents in Midlands Region, 1997
- 15- Substantiated other types of pollutant (where classified) in Midlands Region, 1997
- 16 - Number of Major Incidents 1992-97, Midlands Region
- 17 - Number of pollution incidents, Midlands Region 1996 and 1997
- 18 - Pollution incidents by Area, Midlands Region, 1997
- 19 - Major incidents by area, Midlands Region, 1997
- 20 - Pollution incidents - Upper Severn Area, 1997
- 21 - Pollution incidents - Lower Severn Area, 1997
- 22 - Pollution incidents - Lower Trent Area, 1997
- 23 - Pollution incidents - Upper Trent Area, 1997
- 24 - Formal Warnings - Midlands Region 1996-1997
- 25 - Prosecutions - Midlands Region 1996-1997
- 26 - Prosecutions by Area - Midlands Region, 1997

Appendices:

Pollution Control Statistics - January 1997
Pollution Control Statistics - February 1997
Pollution Control Statistics - March 1997
Pollution Control Statistics - April 1997
Pollution Control Statistics - May 1997
Pollution Control Statistics - June 1997
Pollution Control Statistics - July 1997
Pollution Control Statistics - August 1997
Pollution Control Statistics - September 1997
Pollution Control Statistics - October 1997
Pollution Control Statistics - November 1997
Pollution Control Statistics - December 1997
Upper Severn Pollution Control Statistics 1997
Lower Severn Pollution Control Statistics 1997
Upper Trent Pollution Control Statistics 1997
Lower Trent Pollution Control Statistics 1997
Regional Incident Statistics by type, 1997
Regional Incident Statistics by source, 1997

Definitions

Pollution incidents	: Substantiated Pollution incidents unless other wise specified
Consent applications	: Consents processed by Area staff
Planning application	: Planning applications processed by Area staff
Register enquiries:	: Enquiries for public register and general enquiries
Legal samples:	: Statutory samples taken in connection with a prosecution
Formal cautions:	: Letters written instead of taking the incident to court
Private STW's:	: Inspection/sampling of private STWs including descriptive consents
Severn Trent Water STW's	: Inspection/sampling including descriptive consents
Farms	: Inspections including management plans
Prosecutions	: Cases brought to court in 1997 (incident may not have occurred in 1997)

Summary

Regional Incidents Statistics

There were 5848 reported water pollution incidents in Midlands Region in 1997. This represents a slight decrease when compared to the number reported in 1996(5953). A total of 4411(4305 in 1996) reports were substantiated water pollution incidents, which accounts for 22.5% of the national figure(19,573). Of these, 25 were classified as category 1 incidents, 209 were category 2 incidents and 4177 category 3 incidents. Table 1 shows the distribution of substantiated incidents across the Region.

Table 1: Total number of substantiated incidents in Midlands Region, 1997

Area	1997	% of total
Upper Severn	795	18
Lower Severn	877	20
Upper Trent	1453	33
Lower Trent	1286	29
Total	4411	100

The highest number of incidents occurred in the spring and summer across the whole region.

Major Incidents

25 of the incidents were classified as category 1 or "major incidents", the same number of incidents as the previous year. The regional distribution of major incidents is shown in table 2.

Table 2: Category 1 incidents in 1997

Area	No of category 1 incidents
Upper Severn	2
Lower Severn	5
Upper Trent	11
Lower Trent	7
Total	25

When classified by type of pollutant, 6 of these were placed as type "other", 6 incidents were placed as "oil & fuel", and chemical pollutions accounted for 5 incidents. The most common source was "other premises" with 8 incidents, followed by agriculture with 6 major incidents.

Sources and Types

The number of substantiated incidents, where the source is transport in 1997(508), increased by 12.9% on the 1996 figure(450). The increase was largely in the categories for transport by road and rail. Table 3 shows the distribution of transport incidents by area in 1996 and 1997.

Table 3: Substantiated Transport incidents across the Region, 1996 and 1997

Area	1997	1996	% increase
Upper Severn	98	46*	113
Lower Severn	98	92*	6.5
Upper Trent	156	145*	7.6
Lower Trent	156	167*	-6.6
Total	508	450*	12.9

*figures taken from the report 'Transport Incidents in the Midlands Region 1995/96'

10 incidents were reported where the pollutant was sheep dip - there were no sheep dip incidents in the region in 1996. The number of substantiated pollution incidents, where the type is oil & fuel, increased in 1997(1337) by 6.3% on the 1996 figure(1258).

In 1997, 112 incidents were reported from the construction industry representing a 35% increase on the 1996 figure(83). A major decrease in incidents from the mining industry(57%) has been identified, reducing from 63 incidents in 1996 to 27 in 1997. The total number of chemical incidents decreased by 3.5% from 446 incidents(1996) to 430(1997).

Prosecutions and Formal Warnings

There were a total of 17 prosecutions heard in 1997 for water pollution offences. This is a reduction on the figure for 1996(53). The regional distribution is shown in table 4.

Table 4: Prosecutions in areas, 1997

Area	No of prosecutions
Upper Severn	4
Lower Severn	2
Upper Trent	6
Lower Trent	5
Total	17

The number of formal warnings has increased in the region, especially during the summer. Table 5 shows the distribution of formal warnings in the areas.

Table 5: Formal warnings in areas, 1997

Area	No of Formal warnings
Upper Severn	87
Lower Severn	11
Upper Trent	14
Lower Trent	29
Total	141

Area Summary

Area Incident Statistics

All areas reported 4411 substantiated incidents in 1997 and the distribution by area is shown in table 1.

Sources and Types

In all areas pollutions from "other" sources accounted for the highest proportion of substantiated incidents. In Lower Trent "other" sources represented 36% of all incidents, in Lower Severn 33%, in Upper Trent 31% and in Upper Severn area 28%.

The Sewage and Water Industry category was a significant source of pollution in all areas accounting for 31%, 28%, 25% and 23% of incidents in Upper Trent, Lower Severn, Lower Trent and Upper Severn area respectively.

In the Trent catchment "Industry" was the source of one fifth of all substantiated incidents. In contrast incidents from "Agriculture" accounted for more incidents in the Severn catchment.

"Oil and fuel" accounted for the highest proportion of incidents, by type, in each of the four areas representing 33% of the total incidents in Lower Severn, 31% in Lower Trent, 30% in Upper Trent and 27% in Upper Severn area.

The category for "other" pollutant types accounted for approximately one quarter of all incidents in each area with the exception of Lower Severn where the proportion was about one fifth. Of these, where the pollutant was identified the most frequently found pollutant type was inert suspended solids in all areas except Lower Severn.

Sewage was a major cause of pollution in all areas accounting for 31% of all incidents in Upper Trent, 25% in Lower Trent, 23% in Upper Severn and 21% of incidents in Lower Severn area.

Total number of pollution incidents in Midlands Region 1987-1997



Fig 1

Substantiated pollution incidents by source Midlands Region, 1997

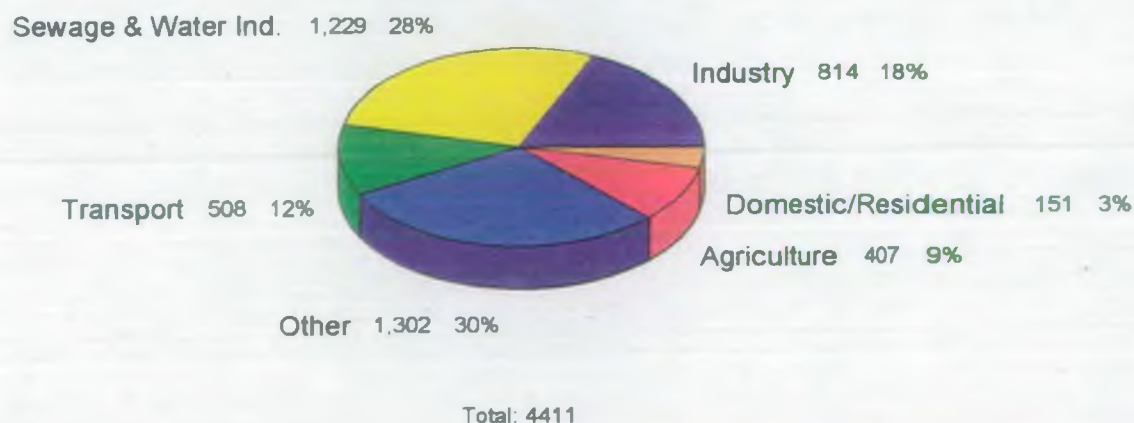


Fig 2

Substantiated Category 1 pollution incidents by source Midlands Region, 1997

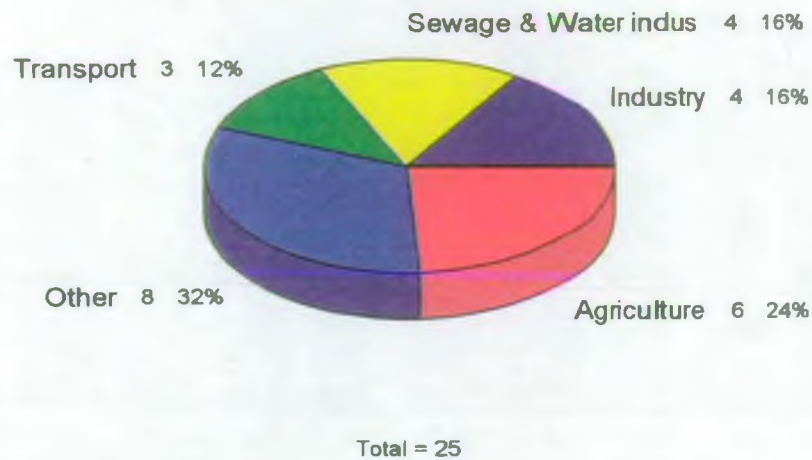


Fig 3

Substantiated pollution incidents by type Midlands Region, 1997

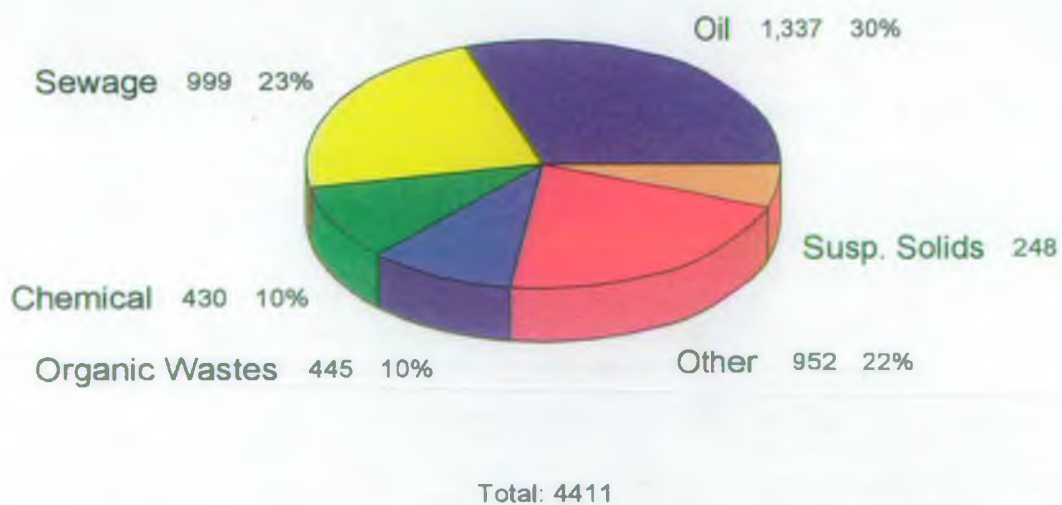


Fig 4

Substantiated Category 1 pollution incidents by type Midlands Region, 1997

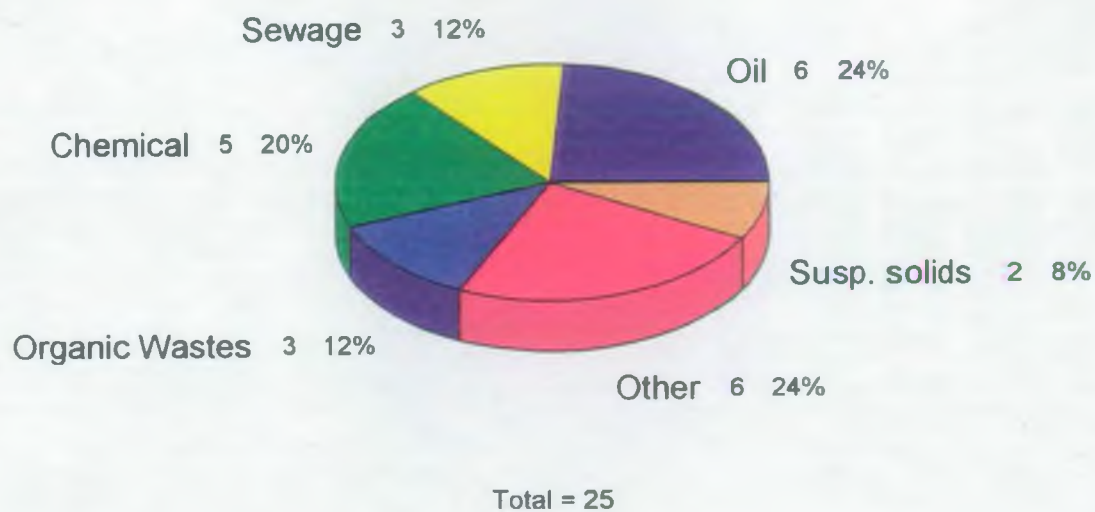


Fig 5

Substantiated agricultural pollution incidents Midlands Region, 1997

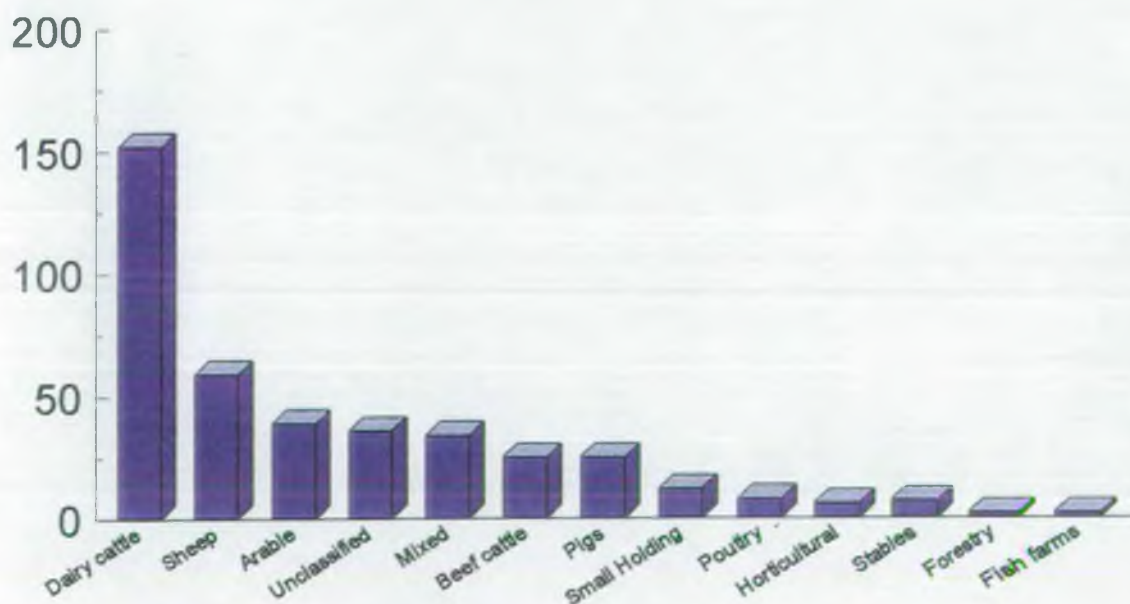


Fig 6

Substantiated industrial pollution incidents by source Midlands Region 1997

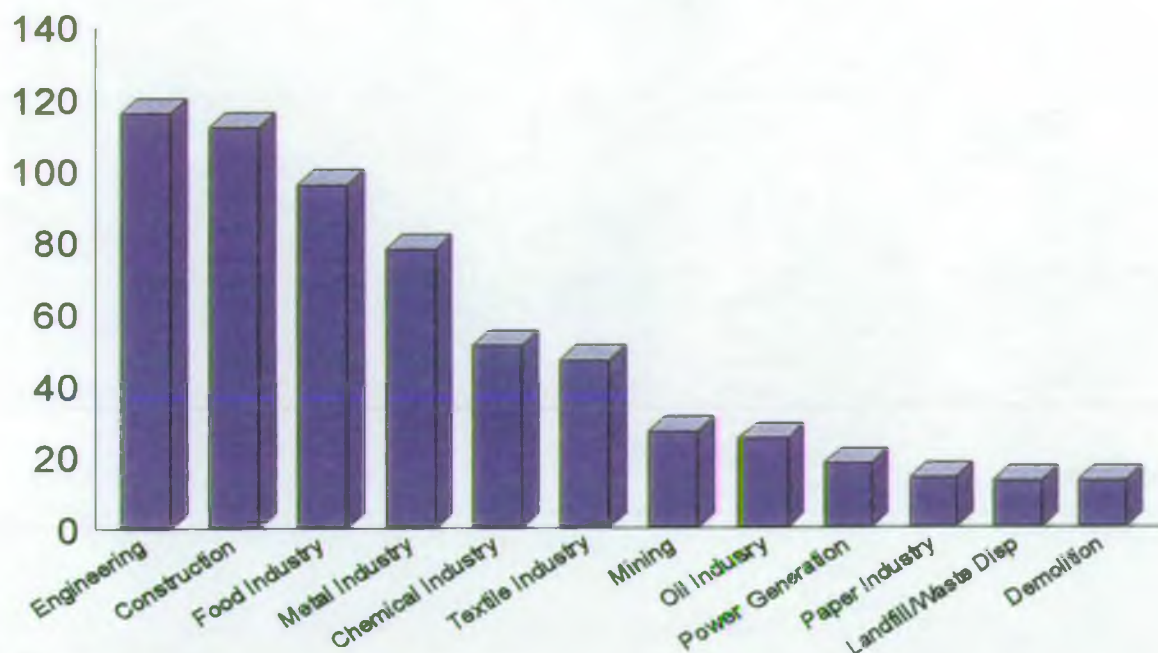
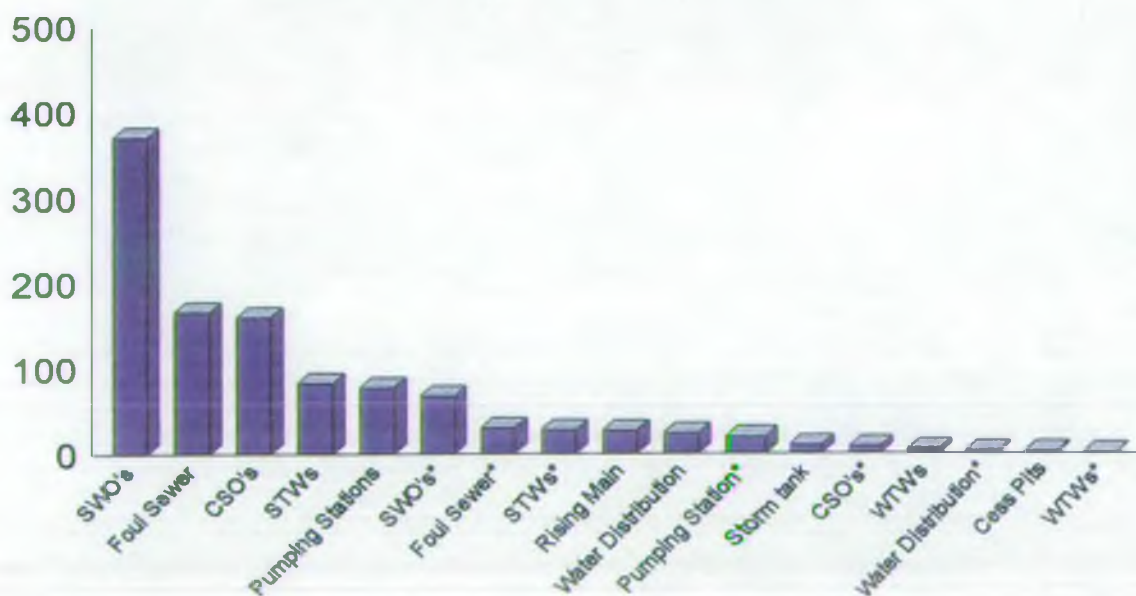


Fig 7

Substantiated sewage and water industry related pollution incidents, Midlands Region, 1997



* Private sewage and water industry sources

Fig 8

Substantiated transport related pollution incidents Midlands Region, 1997

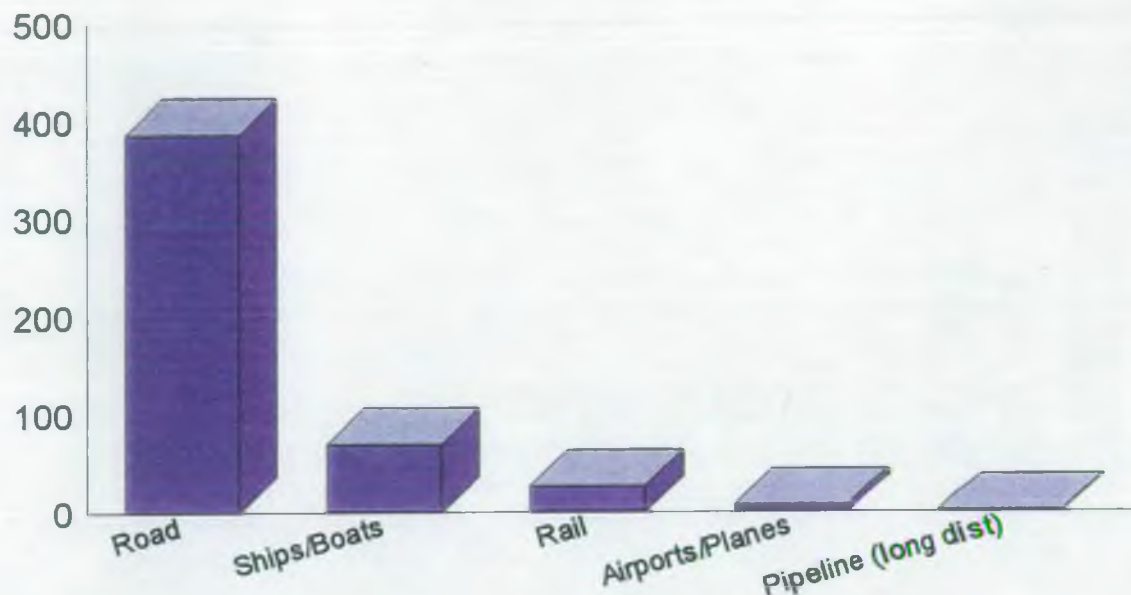


Fig 9

Substantiated other sources of pollution incidents, where classified, Midlands Region, 1997

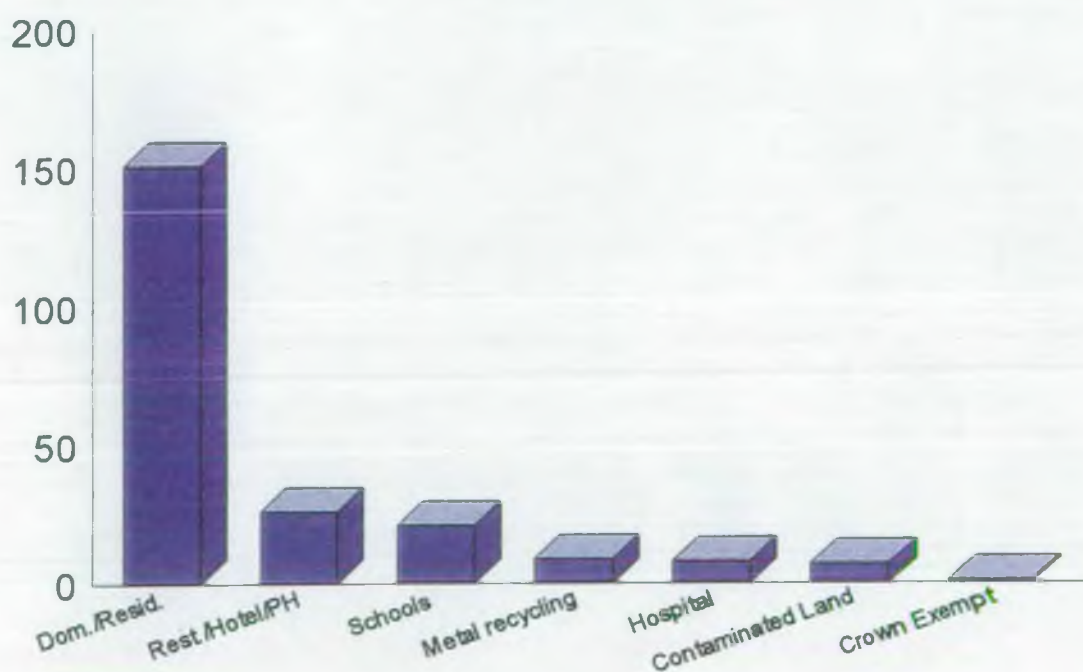


Fig 10

Substantiated organic waste pollution incidents Midlands Region, 1997

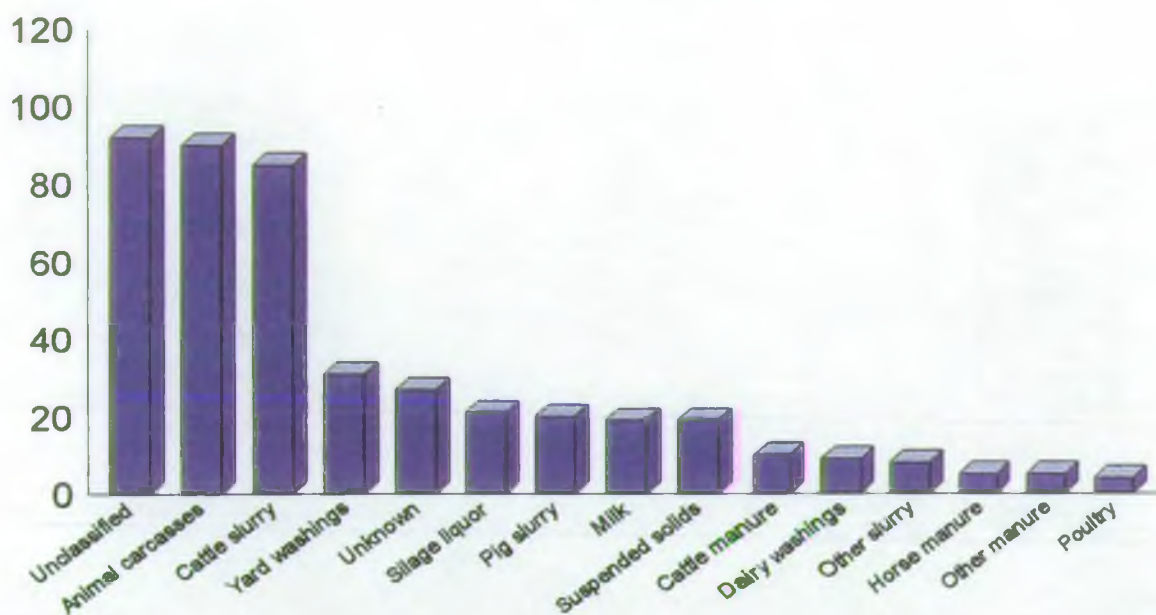


Fig 11

Substantiated fuel & oil pollution incidents Midlands Region, 1997

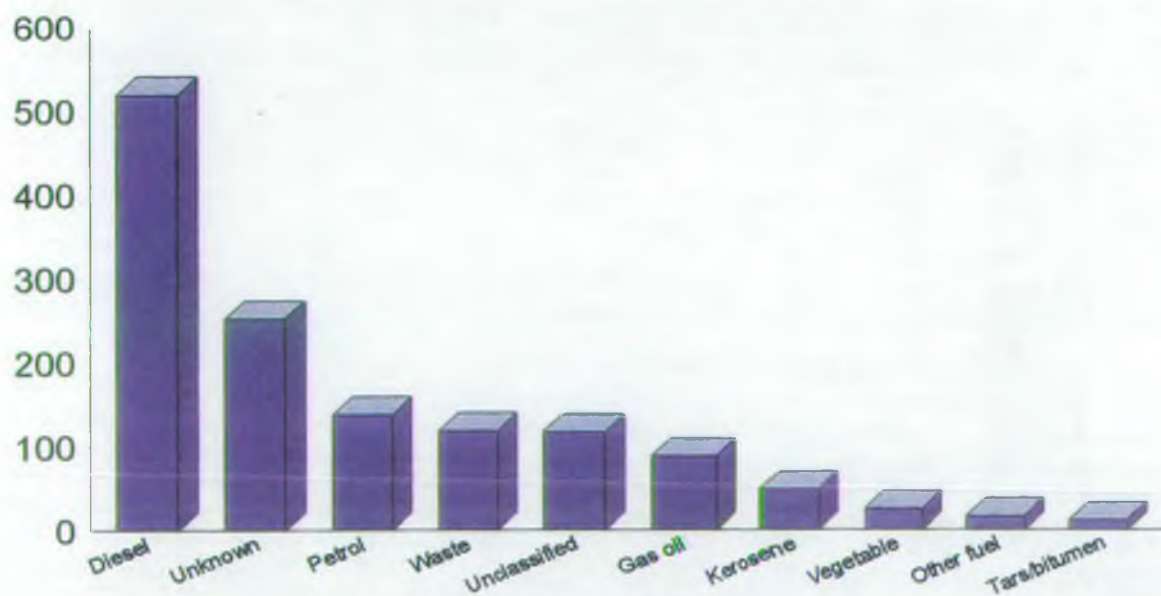


Fig 12

Substantiated chemical pollution incidents (where classified) Midlands Region, 1997

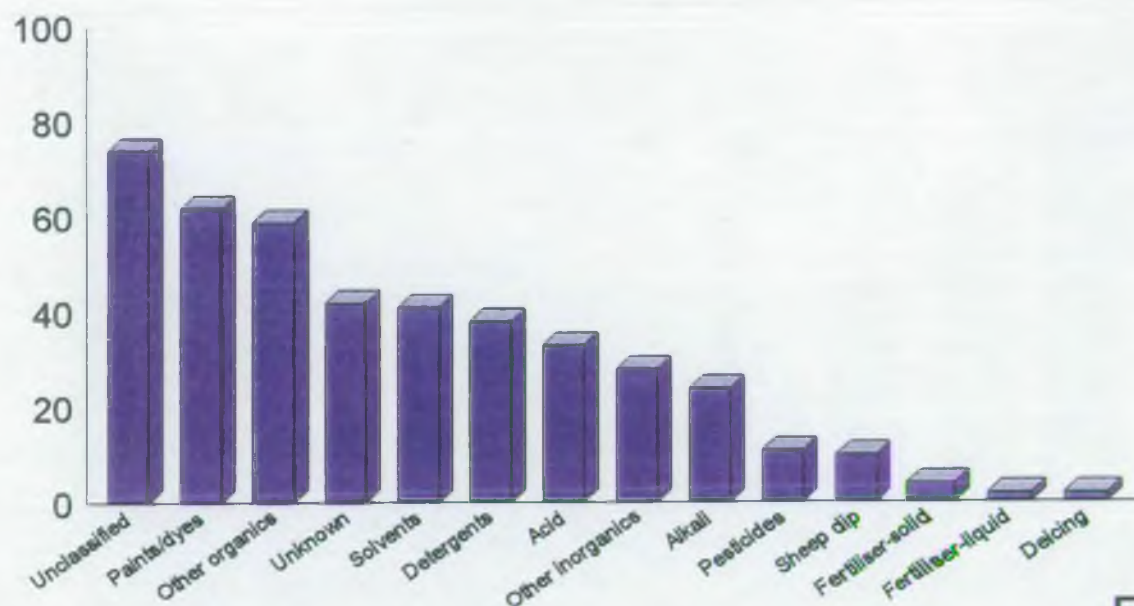


Fig 13

Substantiated sewage pollution incidents in Midlands Region, 1997

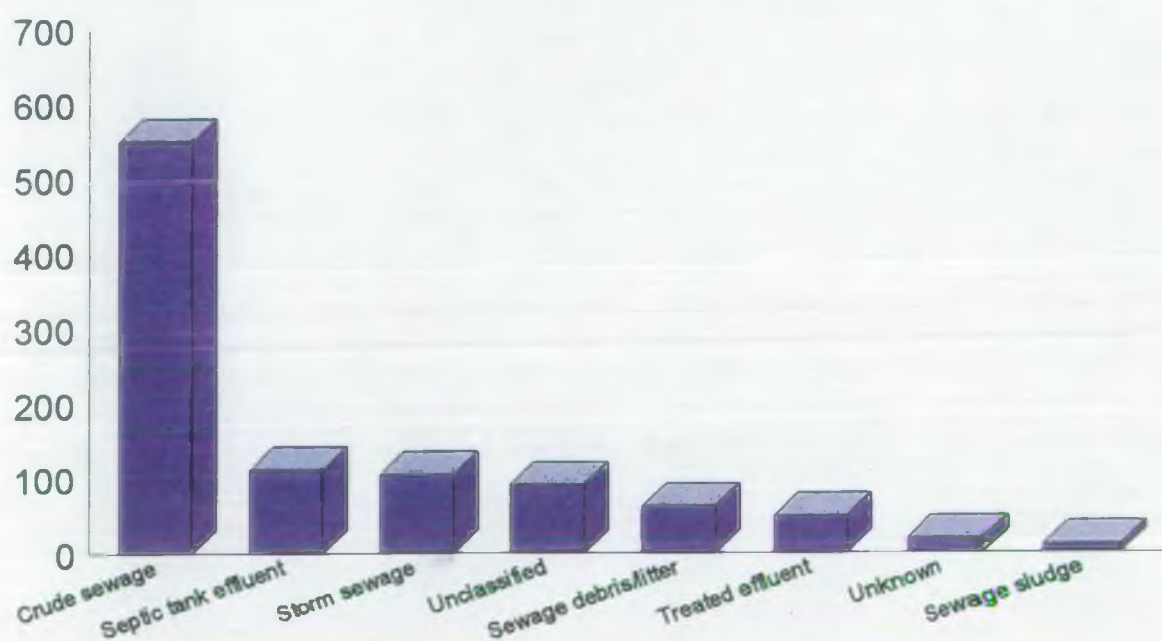


Fig 14

**Substantiated other types of pollutant (where classified)
in Midlands Region 1997**

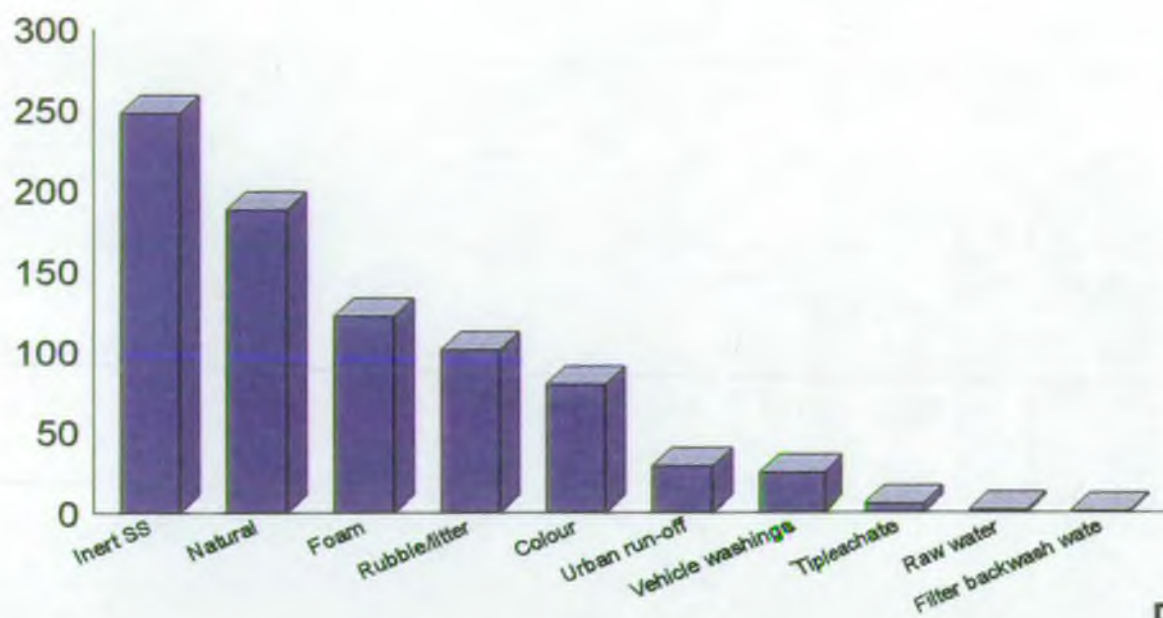


Fig 15

Number of Major Incidents 1992-97

Midlands Region

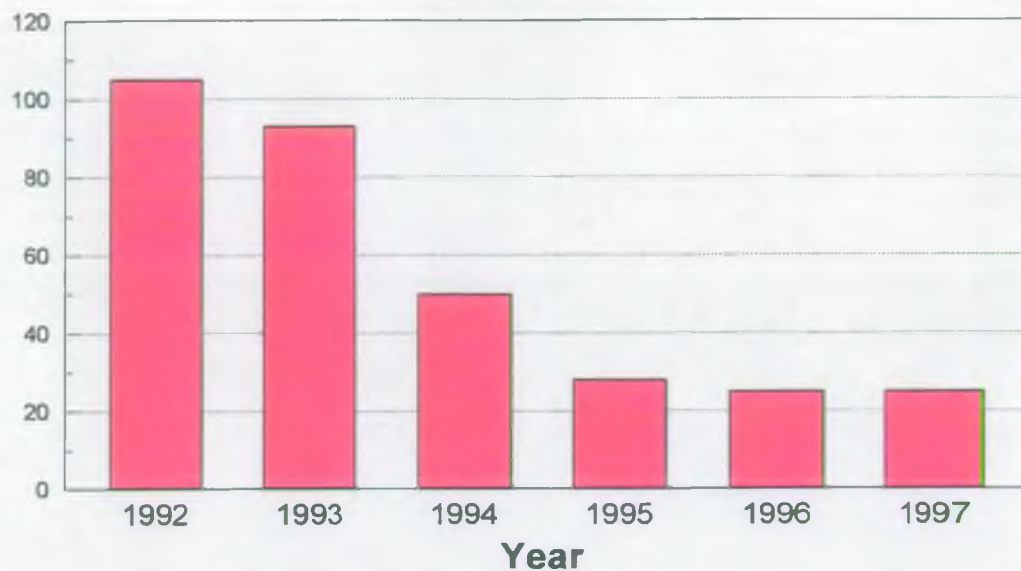


Fig 16

Number of Pollution Incidents

Midlands Region 1996-1997

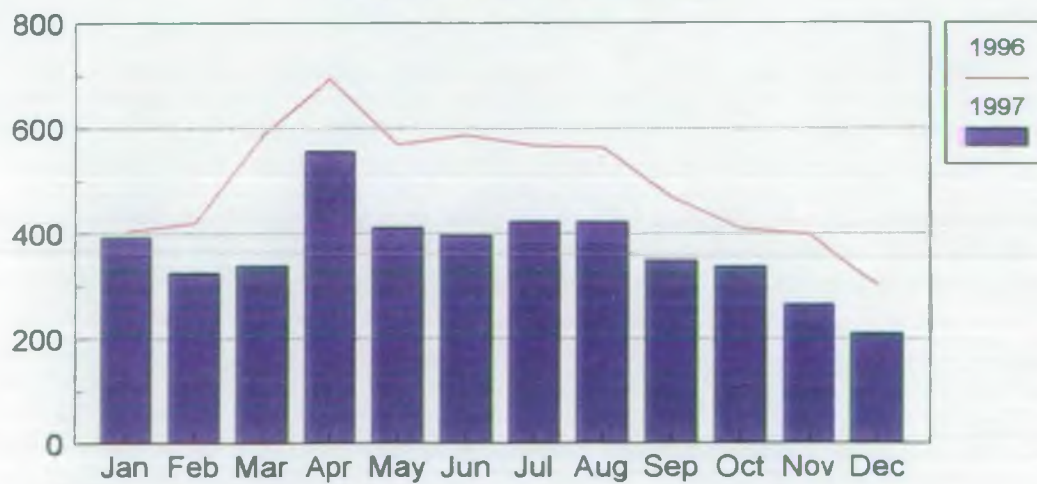


Fig 17

Pollution Incidents By Area

Midlands Region 1997

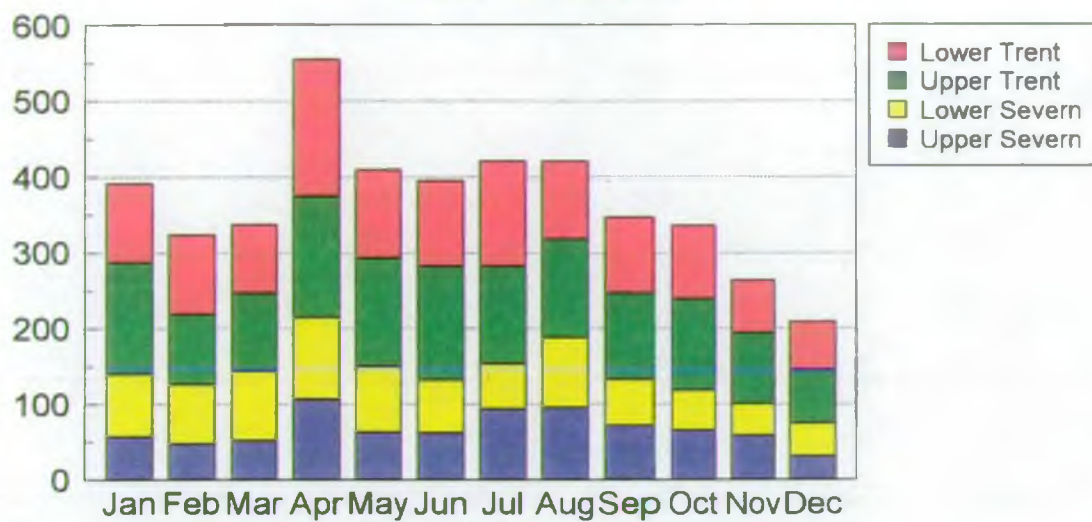


Fig 18

Major Incidents By Area

Midlands Region 1997

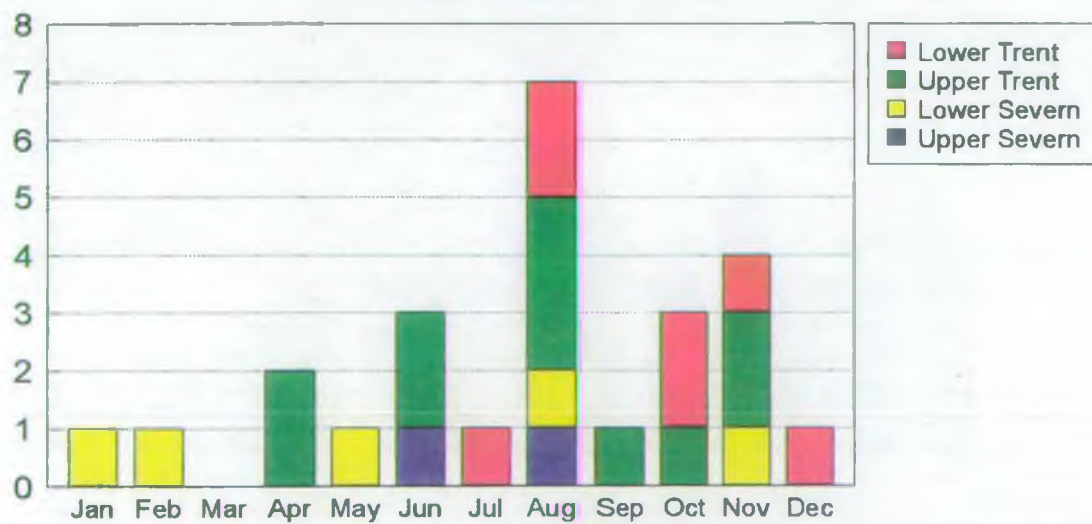


Fig 19

Pollution Incidents - Upper Severn Area

1997

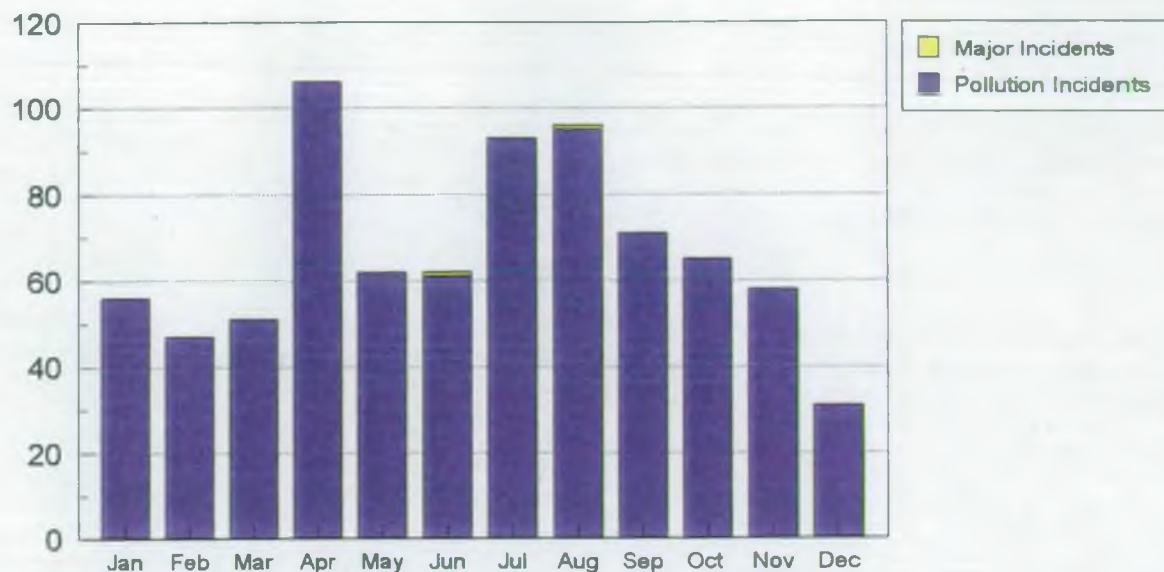


Fig 20

Pollution Incidents - Lower Severn Area

1997

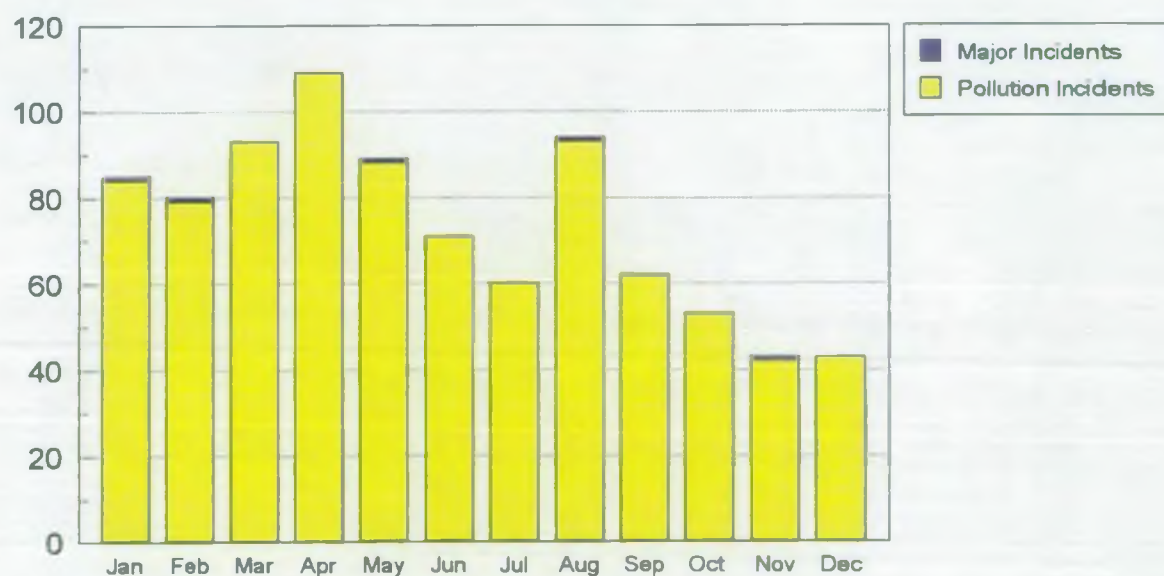


Fig 21

Pollution Incidents - Lower Trent Area 1997

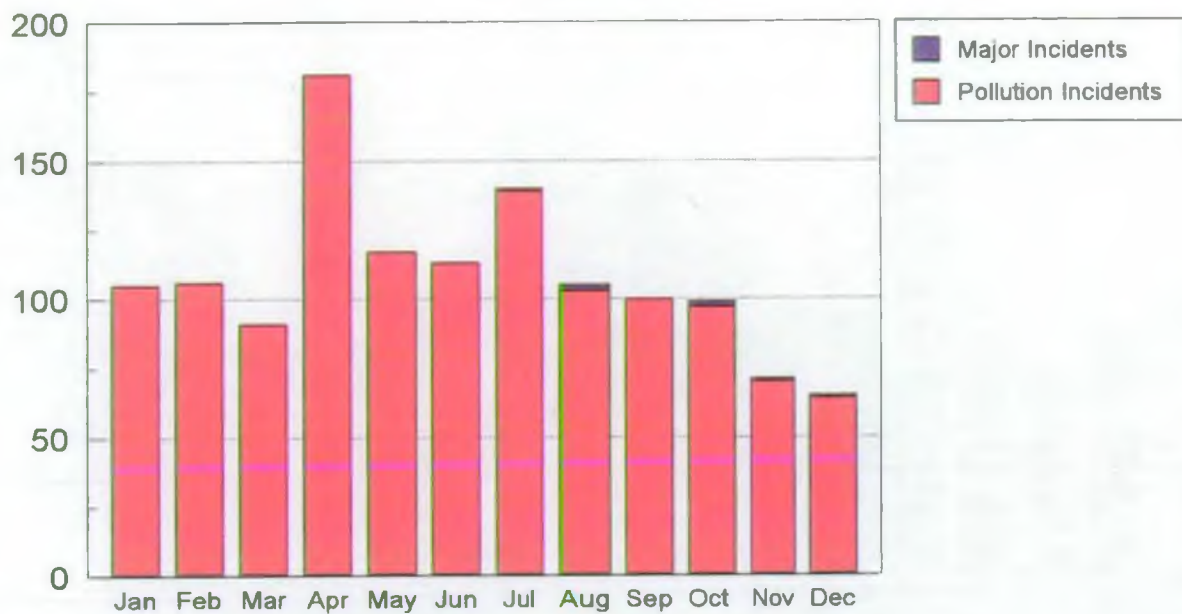


Fig 22

Pollution Incidents - Upper Trent Area 1997

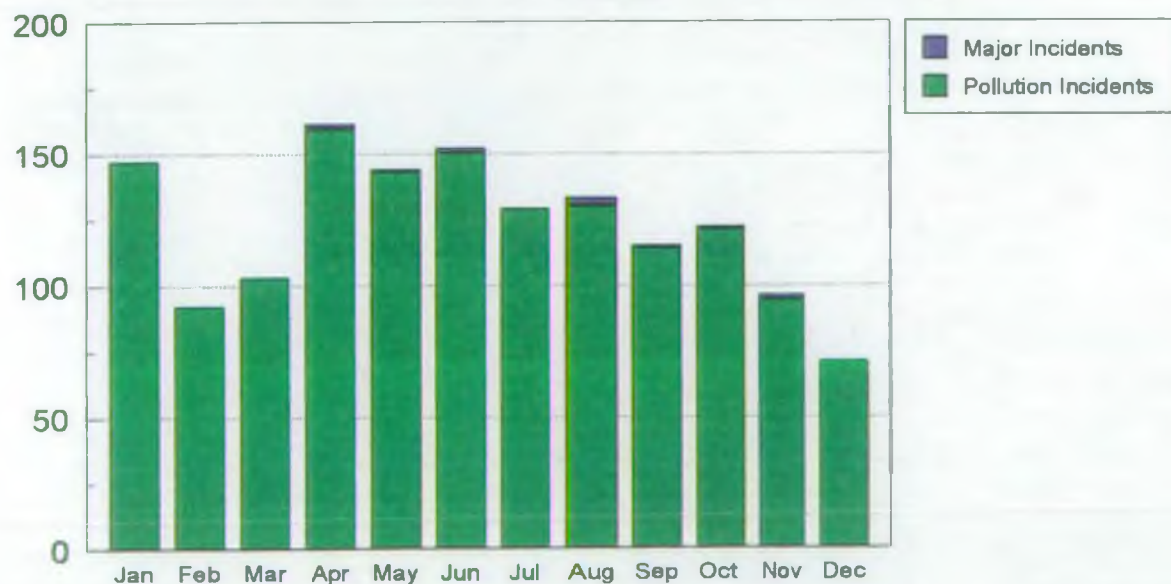


Fig 23

Formal warnings 1996-1997 Midlands Region

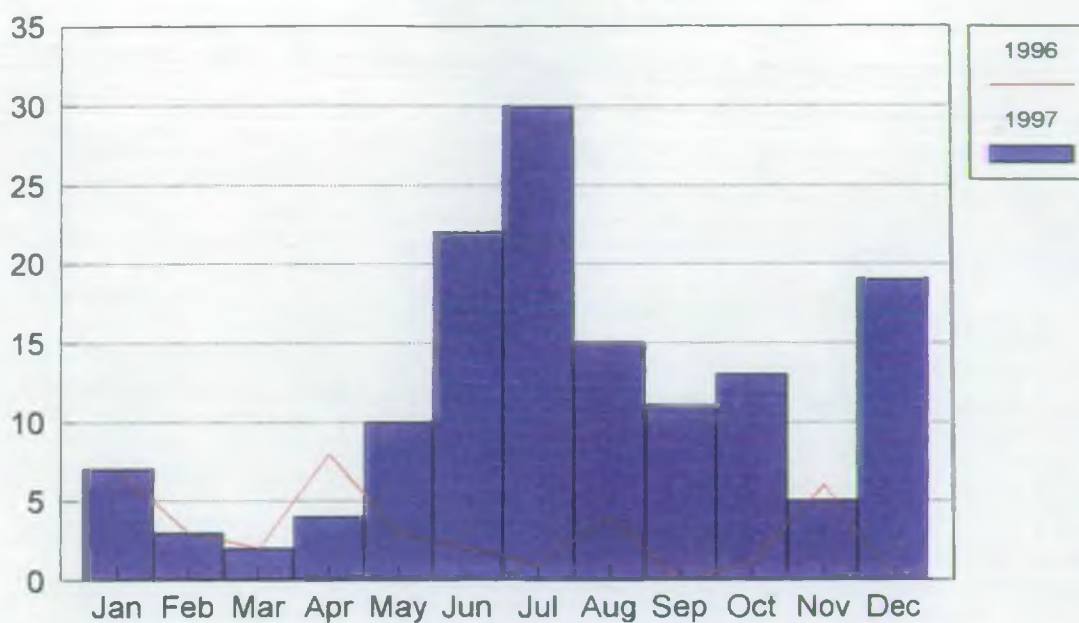


Fig 24

Prosecutions Midlands Region 1996 - 1997

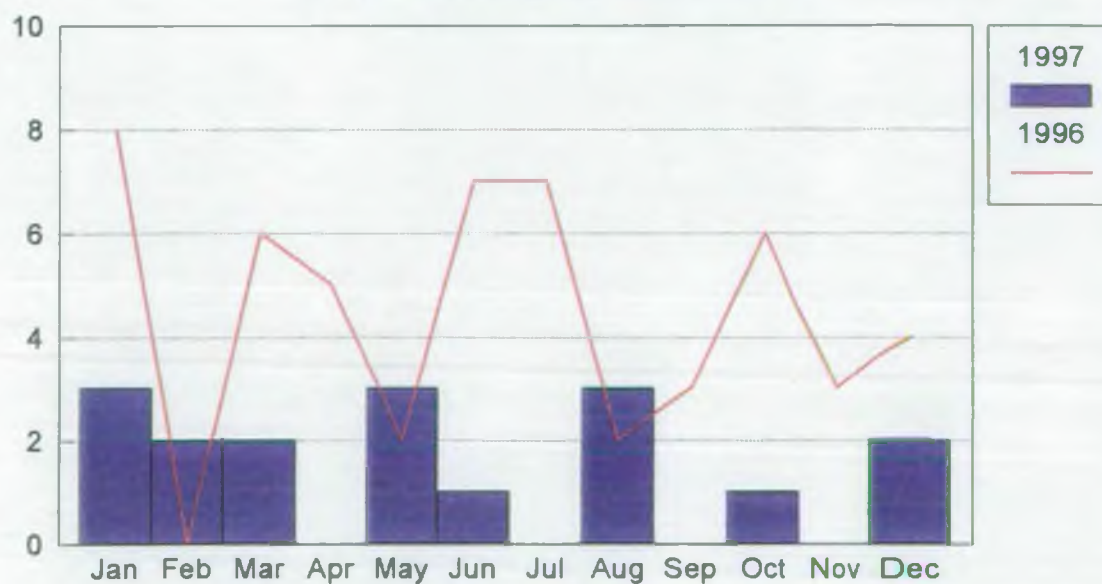


Fig 25

Prosecutions by Area Midlands Region 1997

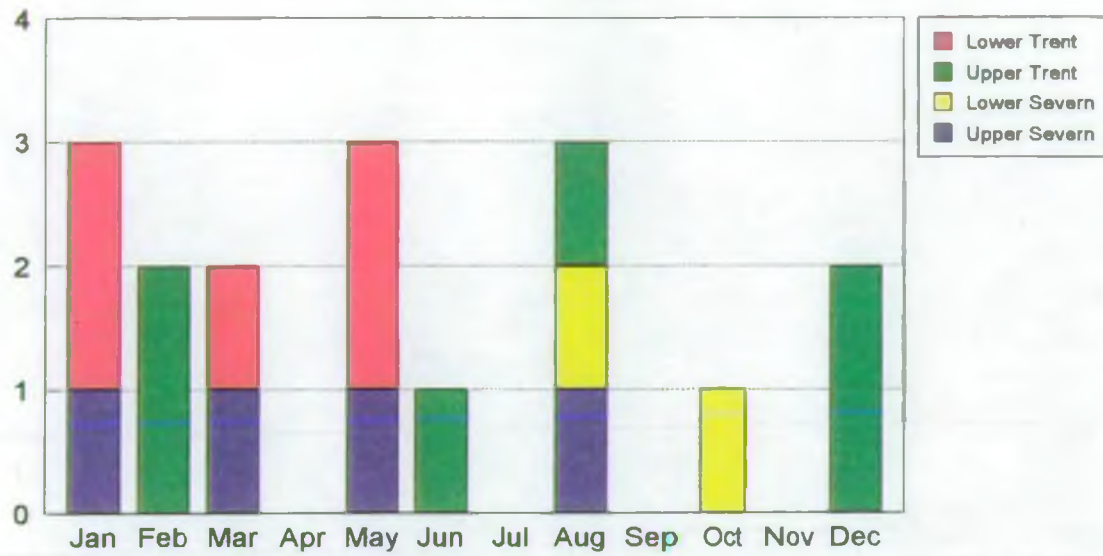


Fig 26

Pollution Control Statistics January 1997

Categories	US	LS	UT	LT	TOTAL
Pollution Incidents	56	84	147	105	392
Call outs	8	18	39	19	84
Consent applications	0	9	1	1	11
Planning applications	93	83	67	61	304
Grant in aid applications	0	0	0	0	0
Waste disposal consultations	3	1	7	2	13
Register enquiries	9	20	51	47	127
Legal samples	1	1	4	2	8
Formal warnings	1	5	1	0	7
Formal cautions	0	0	2	0	2
Prosecutions	1	0	0	0	1

Inspections

Private STWs	114	64	49	53	280
Severn Trent Water plc STWs	57	16	68	100	241
Sewerage	64	50	106	192	412
Industrials including fish farms	127	73	112	278	590
Contaminated land	10	10	5	3	28
Waste disposal	7	5	11	14	37
Farms	28	17	6	26	77
Rivers	183	111	119	482	895
Catchment inventories	0	0	3	0	3
Other	12	44	15	0	71

Pollution Control Statistics February 1997

Categories	US	LS	UT	LT	TOTAL
Pollution Incidents	47	79	92	106	324
Call outs	13	18	34	15	80
Consent applications	5	8	8	6	27
Planning applications	65	70	52	61	248
Grant in aid applications	0	2	0	0	2
Waste disposal consultations	2	3	3	6	14
Register enquiries	6	22	46	59	133
Legal samples	0	1	1	0	2
Formal warnings	1	1	1	0	3
Formal cautions	1	0	1	0	2
Prosecutions	0	0	2	0	2

Inspections

Private STWs	97	116	47	50	310
Severn Trent Water plc STWs	51	28	30	77	186
Sewerage	80	67	102	153	402
Industrials including fish farms	123	86	161	221	591
Contaminated land	12	10	11	6	39
Waste disposal	12	5	12	13	42
Farms	20	13	17	32	82
Rivers	201	113	116	405	835
Catchment inventories	0	0	1	0	1
Other	17	23	13	0	53

Pollution Control Statistics March 1997

Categories	US	LS	UT	LT	TOTAL
Pollution Incidents	51	93	103	91	338
Call outs	9	24	31	13	77
Consent applications	0	5	3	3	11
Planning applications	64	44	80	67	255
Grant in aid applications	0	0	0	0	0
Waste disposal consultations	5	1	6	6	18
Register enquiries	3	22	64	58	147
Legal samples	2	0	2	1	5
Formal warnings	2	0	0	0	2
Formal cautions	0	0	0	0	0
Prosecutions	1	0	0	1	2

Inspections

Private STWs	112	97	33	41	283
Severn Trent Water plc STWs	57	34	39	109	239
Sewerage	46	68	94	142	350
Industrials including fish farms	112	68	11	185	376
Contaminated land	6	11	15	2	34
Waste disposal	13	5	15	10	43
Farms	33	12	24	20	89
Rivers	168	127	91	435	821
Catchment inventories	0	0	1	0	1
Other	21	47	21	10	99

Pollution Control Statistics April 1997

Categories	US	LS	UT	LT	TOTAL
Pollution Incidents	106	109	159	181	555
Call outs	18	24	53	20	115
Consent applications	6	9	1	2	18
Planning applications	77	43	109	101	330
Grant in aid applications	0	0	0	0	0
Waste disposal consultations	3	5	7	7	22
Register enquiries	9	12	70	45	136
Legal samples	3	4	4	5	16
Formal warnings	2	1	0	1	4
Formal cautions	0	0	1	0	1
Prosecutions	0	0	0	0	0

Inspections

Private STWs	109	130	50	33	322
Severn Trent Water plc STWs	42	26	40	142	250
Sewerage	59	86	126	236	507
Industrials including fish farms	127	133	131	253	644
Contaminated land	6	11	12	0	29
Waste disposal	20	9	13	10	52
Farms	24	33	16	38	111
Rivers	213	143	134	560	1050
Catchment inventories	0	0	7	0	7
Other	10	46	24	22	102

Pollution Control Statistics May 1997

Categories	US	LS	UT	LT	TOTAL
Pollution Incidents	62	88	143	117	410
Call outs	18	37	52	15	122
Consent applications	5	7	1	1	14
Planning applications	62	104	81	52	299
Grant in aid applications	0	0	0	0	0
Waste disposal consultations	3	1	5	4	13
Register enquiries	2	17	83	37	139
Legal samples	1	5	2	1	9
Formal warnings	5	1	0	4	10
Formal cautions	0	0	2	0	2
Prosecutions	1	0	0	2	3

Inspections

Private STWs	105	86	38	33	262
Severn Trent Water plc STWs	41	17	37	91	186
Sewerage	78	60	92	142	372
Industrials including fish farms	126	81	95	187	489
Contaminated land	4	10	8	1	23
Waste disposal	10	1	15	19	45
Farms	22	24	14	21	81
Rivers	264	115	129	431	939
Catchment inventories	0	1	7	0	8
Other	24	80	14	10	128

Pollution Control Statistics June 1997

Categories	US	LS	UT	LT	TOTAL
Pollution Incidents	61	71	150	113	395
Call outs	15	23	53	24	115
Consent applications	4	9	9	12	34
Planning applications	69	125	0	59	253
Grant in aid applications	0	0	0	0	0
Waste disposal consultations	3	0	6	1	10
Register enquiries	5	16	56	58	135
Legal samples	1	0	5	1	7
Formal warnings	15	2	1	4	22
Formal cautions	0	0	0	0	0
Prosecutions	0	0	1	0	1

Inspections

Private STWs	95	86	27	38	246
Severn Trent Water plc STWs	32	10	40	73	155
Sewerage	60	73	95	145	373
Industrials including fish farms	121	86	100	171	478
Contaminated land	10	8	12	0	30
Waste disposal	9	4	11	12	36
Farms	35	20	23	27	105
Rivers	311	138	138	400	987
Catchment inventories	0	1	5	0	6
Other	66	38	34	6	144

Pollution Control Statistics July 1997

Categories	US	LS	UT	LT	TOTAL
Pollution Incidents	93	60	129	139	421
Call outs	16	16	45	25	102
Consent applications	5	10	10	3	28
Planning applications	105	78	119	72	374
Grant in aid applications	0	0	0	0	0
Waste disposal consultations	4	4	3	3	14
Register enquiries	14	27	99	61	201
Legal samples	1	1	6	4	12
Formal warnings	13	0	0	17	30
Formal cautions	1	0	1	0	2
Prosecutions	0	0	0	0	0

Inspections

Private STWs	100	107	41	42	290
Severn Trent Water plc STWs	38	14	34	86	172
Sewerage	62	47	95	167	371
Industrials including fish farms	109	100	104	224	537
Contaminated land	5	5	9	1	20
Waste disposal	12	2	11	16	41
Farms	73	15	30	29	147
Rivers	298	73	127	489	987
Catchment inventories	0	0	0	0	0
Other	44	17	32	0	93

Pollution Control Statistics August 1997

	US	LS	UT	LT	TOTAL
Pollution Incidents	95	93	130	103	421
Call outs	33	26	65	43	167
Consent applications	3	14	11	9	37
Planning applications	58	76	71	57	262
Grant in aid applications	0	0	0	0	0
Waste disposal consultations	3	0	4	1	8
Register enquiries	3	15	67	79	164
Legal samples	2	2	2	2	8
Formal warnings	8	0	7	0	15
Formal cautions	0	0	1	0	1
Prosecutions	1	1	1	0	3

Inspections

Private STWs	65	59	32	48	204
Severn Trent Water plc STWs	35	23	33	93	184
Sewerage	80	51	158	143	432
Industrials including fish farms	112	88	94	184	478
Contaminated land	8	8	3	1	20
Waste disposal	2	3	12	18	35
Farms	34	25	26	22	107
Rivers	313	115	113	504	1045
Catchment inventories	0	0	0	0	0
Other	30	40	13	12	95

Pollution Control Statistics September 1997

Categories	US	LS	UT	LT	TOTAL
Pollution Incidents	71	62	114	100	347
Call outs	10	3	38	5	56
Consent applications	5	11	12	6	34
Planning applications	91	134	87	66	378
Grant in aid applications	0	1	0	0	1
Waste disposal consultations	11	0	2	2	15
Register enquiries	7	17	63	67	154
Legal samples	10	0	4	2	16
Formal warnings	11	0	0	0	11
Formal cautions	0	0	0	0	0
Prosecutions	0	0	0	0	0

Inspections

Private STWs	116	130	49	47	342
Severn Trent Water plc STWs	69	42	43	151	305
Sewerage	81	46	122	139	388
Industrials including fish farms	121	74	145	189	529
Contaminated land	6	10	8	1	25
Waste disposal	19	6	4	9	38
Farms	14	16	12	27	69
Rivers	296	75	103	552	1026
Catchment inventories	0	0	0	0	0
Other	31	39	14	11	95

Pollution Control Statistics October 1997

Categories	US	LS	UT	LT	TOTAL
Pollution Incidents	65	53	121	97	336
Call outs	22	12	44	9	87
Consent applications	5	14	10	13	42
Planning applications	91	96	53	58	298
Grant in aid applications	0	0	0	0	0
Waste disposal consultations	6	0	4	4	14
Register enquiries	6	13	9	68	96
Legal samples	1	3	5	3	12
Formal warnings	8	1	2	2	13
Formal cautions	1	0	0	0	1
Prosecutions	0	1	0	0	1

Inspections

Private STWs	125	78	65	53	321
Severn Trent Water plc STWs	87	10	56	96	249
Sewerage	85	55	109	135	384
Industrials including fish farms	125	80	131	249	585
Contaminated land	9	6	9	1	25
Waste disposal	16	6	12	16	50
Farms	33	16	13	13	75
Rivers	334	75	100	473	982
Catchment inventories	0	0	0	0	0
Other	30	39	7	7	83

Pollution Control Statistics November 1997

Categories	US	LS	UT	LT	TOTAL
Pollution Incidents	58	42	94	70	264
Call outs	17	9	29	10	65
Consent applications	5	2	3	12	22
Planning applications	72	111	70	46	299
Grant in aid applications	0	0	0	0	0
Waste disposal consultations	3	1	1	0	5
Register enquiries	6	4	58	64	132
Legal samples	0	2	2	2	6
Formal warnings	5	0	0	0	5
Formal cautions	0	0	0	0	0
Prosecutions	0	0	0	0	0

Inspections

Private STWs	161	69	37	33	300
Severn Trent Water plc STWs	48	16	30	74	168
Sewerage	26	20	97	119	262
Industrials including fish farms	117	75	130	169	491
Contaminated land	6	13	9	0	28
Waste disposal	19	18	14	22	73
Farms	26	15	24	12	77
Rivers	174	79	110	453	816
Catchment inventories	0	0	0	0	0
Other	27	77	1	0	105

Pollution Control Statistics December 1997

Categories	US	LS	UT	LT	TOTAL
Pollution Incidents	31	43	71	64	209
Call outs	11	4	13	11	39
Consent applications	8	13	5	6	32
Planning applications	61	87	75	46	269
Grant in aid applications	0	0	0	0	0
Waste disposal consultations	4	0	2	0	6
Register enquiries	0	1	50	61	112
Legal samples	1	1	5	2	9
Formal warnings	16	0	2	1	19
Formal cautions	0	0	1	1	2
Prosecutions	0	0	2	0	2

Inspections

Private STWs	56	62	36	39	193
Severn Trent Water plc STWs	22	24	35	115	196
Sewerage	40	14	70	169	293
Industrials including fish farms	84	19	102	250	455
Contaminated land	3	0	6	0	9
Waste disposal	3	5	16	27	51
Farms	18	6	16	12	52
Rivers	161	1	97	496	755
Catchment inventories	0	0	0	0	0
Other	14	4	1	2	21

Upper Severn Pollution Statistics 1997

Categories	Jan	Feb	Mar	Apr	May	Jun	Jul	Aug	Sep	Oct	Nov	Dec	Total
Pollution Incidents	56	47	51	106	62	61	93	95	71	65	58	31	796
Call outs	8	13	9	18	18	15	16	33	10	22	17	11	190
Consent applications	0	5	0	6	5	4	5	3	5	5	5	8	51
Planning applications processed	93	65	64	77	62	69	105	58	91	91	72	61	908
Grant in aid applications	0	0	0	0	0	0	0	0	0	0	0	0	0
Waste disposal consultations	3	2	5	3	3	3	4	3	11	6	3	4	50
Public register enquiries	9	6	3	9	2	5	14	3	7	6	6	0	70
Legal samples	1	0	2	3	1	1	1	2	10	1	0	1	23
Formal warnings	1	1	2	2	5	15	13	8	11	8	5	16	87
Formal cautions	0	1	0	0	0	0	1	0	0	1	0	0	3
Prosecutions	1	0	1	0	1	0	0	1	0	0	0	0	4

Inspections

Private STWs	114	97	112	109	105	95	100	65	116	125	161	56	1255
Severn Trent Water plc STWs	57	51	57	42	41	32	38	35	69	87	48	22	579
Sewerage	64	80	46	59	78	60	62	80	81	85	68	40	803
Industrials including fish farms	127	123	112	127	126	121	109	112	121	125	117	84	1404
Contaminated land	10	12	6	6	4	10	5	8	6	9	6	3	85
Waste disposal	7	12	13	20	10	9	12	2	19	16	19	3	142
Farms	28	20	33	24	22	35	73	34	14	33	26	18	360
Rivers	183	201	168	213	264	311	298	313	296	334	174	161	2916
Catchment inventories	0	0	0	0	0	0	0	0	0	0	0	0	0
Other	12	17	21	10	24	66	44	30	31	30	27	14	326

Lower Severn Pollution Statistics 1997

Categories	Jan	Feb	Mar	Apr	May	Jun	Jul	Aug	Sep	Oct	Nov	Dec	Total
Pollution incidents	84	79	93	109	88	71	60	93	62	53	42	43	877
Call outs	18	18	24	24	37	23	16	26	3	12	9	4	214
Consent applications	9	8	5	9	7	9	10	14	11	14	2	13	111
Planning applications processed	83	70	44	43	104	125	78	76	134	96	111	87	1051
Grant in aid applications	0	2	0	0	0	0	0	0	1	0	0	0	3
Waste disposal consultations	1	3	1	5	1	0	4	0	0	0	1	0	16
Register enquiries	20	22	22	12	17	16	27	15	17	13	4	1	186
Legal samples	1	1	0	4	5	0	1	2	0	3	2	1	20
Formal warnings	5	1	0	1	1	2	0	0	0	1	0	0	11
Formal cautions	0	0	0	0	0	0	0	0	0	0	0	0	0
Prosecutions	0	0	0	0	0	0	0	1	0	1	0	0	2

Inspections

Private STWs	64	116	97	130	86	86	107	59	130	78	69	62	1084
Severn Trent Water plc STWs	16	28	34	26	17	10	14	23	42	10	16	24	260
Sewerage	50	67	68	86	60	73	47	51	46	55	20	14	637
Industrials including fish farms	73	86	68	133	81	86	100	88	74	80	75	19	963
Contaminated land	10	10	11	11	10	8	5	8	10	6	13	0	102
Waste disposal	5	5	5	9	1	4	2	3	6	6	18	5	69
Farms	17	13	12	33	24	20	15	25	16	16	15	6	212
Rivers	111	113	127	143	115	138	73	115	75	75	79	1	1165
Catchment inventories	0	0	0	0	1	1	0	0	0	0	0	0	2
Other	44	23	47	46	80	38	17	40	39	39	77	4	494

Upper Trent Pollution Statistics 1997

Categories	Jan	Feb	Mar	Apr	May	Jun	Jul	Aug	Sep	Oct	Nov	Dec	Total
Pollution Incidents	147	92	103	159	143	150	129	130	114	121	94	71	1453
Call outs	39	34	31	53	52	53	45	65	38	44	29	13	496
Consent applications	1	8	3	1	1	9	10	11	12	10	3	5	74
Planning applications processed	67	52	80	109	81	0	119	71	87	53	70	75	864
Grant in aid applications	0	0	0	0	0	0	0	0	0	0	0	0	0
Waste disposal consultations	7	3	6	7	5	6	3	4	2	4	1	2	50
Public register enquiries	51	46	64	70	83	56	99	67	63	9	58	50	716
Legal samples	4	1	2	4	2	5	6	2	4	5	2	5	42
Formal warnings	1	1	0	0	0	1	0	7	0	2	0	2	14
Formal cautions	2	1	0	1	2	0	1	1	0	0	0	1	9
Prosecutions	0	2	0	0	0	1	0	1	0	0	0	2	6

Inspections

Private STWs	49	47	33	50	38	27	41	32	49	65	37	36	504
Severn Trent Water plc STWs	68	30	39	40	37	40	34	33	43	56	30	35	485
Sewerage	106	102	94	126	92	95	95	158	122	109	97	70	1266
Industrials including fish farms	112	161	11	131	95	100	104	94	145	131	130	102	1316
Contaminated land	5	11	15	12	8	12	9	3	8	9	9	6	107
Waste disposal	11	12	15	13	15	11	11	12	4	12	14	16	146
Farms	6	17	24	16	14	23	30	26	12	13	24	16	221
Rivers	119	116	91	134	129	138	127	113	103	100	110	97	1377
Catchment inventories	3	1	1	7	7	5	0	0	0	0	0	0	24
Other	15	13	21	24	14	34	32	13	14	7	1	1	189

Lower Trent Pollution statistics 1997

Categories	Jan	Feb	Mar	Apr	May	Jun	Jul	Aug	Sep	Oct	Nov	Dec	Total
Pollution Incidents	105	106	91	181	117	113	139	103	100	97	70	64	1286
Call outs	19	15	13	20	15	24	25	43	5	9	10	11	209
Consent applications	1	6	3	2	1	12	3	9	6	13	12	6	74
Planning applications processed	61	61	67	101	52	59	72	57	66	58	46	46	746
Grant in aid applications	0	0	0	0	0	0	0	0	0	0	0	0	0
Waste disposal consultations	2	6	6	7	4	1	3	1	2	4	0	0	36
Public Register enquiries	47	59	58	45	37	58	61	79	67	68	64	61	704
Legal samples	2	0	1	5	1	1	4	2	2	3	2	2	25
Formal warnings	0	0	0	1	4	4	17	0	0	2	0	1	29
Formal cautions	0	0	0	0	0	0	0	0	0	0	0	1	1
Prosecutions	2	0	1	0	2	0	0	0	0	0	0	0	5

Inspections

Private STWs	53	50	41	33	33	38	42	48	47	53	33	39	510
Severn Trent Water plc STWs	100	77	109	142	91	73	86	93	151	96	74	115	1207
Sewerage	192	153	142	236	142	145	167	143	139	135	119	169	1882
Industrials including fish farms	278	221	185	253	187	171	224	184	189	249	169	250	2560
Contaminated land	3	6	2	0	1	0	1	1	1	1	0	0	16
Waste disposal	14	13	10	10	19	12	16	18	9	16	22	27	186
Farms	26	32	20	38	21	27	29	22	27	13	12	12	279
Rivers	482	405	435	560	431	400	489	504	552	473	453	496	5680
Catchment inventories	0	0	0	0	0	0	0	0	0	0	0	0	0
Other	0	0	10	22	10	6	0	12	11	7	0	2	80

REGION: Midlands				
Incidents by type				
Oil & Fuel	Cat 1	Cat 2	Cat 3	TOTAL
Petrol	0	1	137	138
Diesel	3	31	485	519
Gas oil	2	7	79	88
Kerosene	1	5	43	49
Other fuel	0	0	17	17
Waste	0	2	117	119
Tars/bit	0	0	12	12
Vegetable	0	1	25	26
Unknown	0	4	248	252
Other	0	7	110	117
TOTAL	6	58	1273	1337
Sewage	Cat 1	Cat 2	Cat 3	TOTAL
Treated Effluent	1	1	47	49
Septic Tank effluent	0	0	112	112
Crude sewage	1	22	527	550
Storm sewage	1	4	100	105
Sewage sludge	0	1	10	11
Sewage debris/litter	0	0	62	62
Other	0	1	90	91
Unknown	0	0	19	19
TOTAL	3	29	967	999
Chemical	Cat 1	Cat 2	Cat 3	TOTAL
Pesticides	0	2	9	11
Sheep dip	1	6	3	10
Fertiliser - liquid	0	0	2	2
Fertiliser - solid	0	1	3	4
Deicing	0	0	2	2
Acid	0	3	30	33
Alkali	1	1	22	24
Paints/dyes	0	2	60	62
Detergents	0	6	32	38
Solvents	1	1	39	41
Other organics	1	6	52	59
Other inorganics	0	2	26	28
Unknown	1	2	39	42
Other	0	4	70	74
TOTAL	5	36	389	430

Organic wastes	Cat 1	Cat 2	Cat 3	TOTAL	
Cattle slurry	0	21	64	85	
Pig slurry	1	1	18	20	
Other slurry	0	0	8	8	
Cattle manure (solid)	0	0	10	10	
Pig manure (solid)	*	*	*	0	
Poultry (solid)	0	0	4	4	
Horse manure (solid)	0	0	5	5	
Other manure (solid)	0	0	5	5	
Animal carcasses	0	0	90	90	
Milk	0	0	19	19	
Other organic SS	0	1	18	19	
Silage liquor	0	2	19	21	
Yard washings	0	1	30	31	
Dairy parlour washings	0	1	8	9	
Other	2	13	77	92	
Unknown	0	4	23	27	
TOTAL	3	44	398	445	
Other	Cat 1	Cat 2	Cat 3	TOTAL	
Foam	0	1	121	122	
Natural	1	17	170	188	
Vehicle washings	0	0	25	25	
Rubble/litter	0	0	101	101	
Inert SS	2	5	241	248	
Colour	0	2	78	80	
Tip leachate	1	1	4	6	
Urban run-off	3	2	24	29	
Fire water	*	*	*	*	
Filter backwash water	0	0	1	1	
Raw water	0	0	2	2	
Unknown other	1	14	383	398	
TOTAL	8	42	1150	1200	
	Cat 1	Cat 2	Cat 3	TOTAL	
TOTAL ALL TYPES	25	209	4177	4411	
COMPLETED BY: Birgitte Nielsen		DATE: 26/2/98			

REGION: Midlands					
Incidents by premises					
Industry	Cat 1	Cat 2	Cat 3	TOTAL	
Chemical Industry	1	7	43	51	
Oil Industry	0	1	24	25	
Fuelling stations	*	*	*	*	
Paper Industry	0	2	12	14	
Food Industry	0	7	89	96	
Textile Industry	0	4	43	47	
Metal Industry	0	8	70	78	
Engineering	2	8	106	116	
Power Generation	0	0	18	18	
Landfill/Waste Disp	0	4	9	13	
Construction	1	6	105	112	
Demolition	0	1	12	13	
Other	0	5	199	204	
TOTAL	4	53	730	787	
Mining	Cat 1	Cat 2	Cat 3	TOTAL	
Coal	0	0	7	7	
Aggregate (sand & gravel)	0	0	4	4	
Clay	0	0	6	6	
Hard rock quarrying	0	0	5	5	
Metal	*	*	*	*	
Abandoned	0	0	2	2	
Other	0	0	3	3	
TOTAL	0	0	27	27	
Sewage and Water WSPLC	Cat 1	Cat 2	Cat 3	TOTAL	
Sewage Treatment Works	1	9	73	83	
Combined Sewer Overflow	1	10	149	160	
Storm tank	1	2	7	10	
Rising Main	0	1	26	27	
Water Treatment Works	0	0	5	5	
Water distribution system	0	1	23	24	
Surface Water Outfall	0	7	363	370	
Pumping station	1	5	72	78	
Foul sewer	0	5	161	166	
Other	0	1	40	41	
TOTAL	4	41	919	964	
Sewage and Water Private	Cat 1	Cat 2	Cat 3	TOTAL	
Sewage Treatment Works	0	0	28	28	
Combined Sewer Overflow	0	0	8	8	
Water Treatment Works	0	0	1	1	
Water distribution system	0	0	3	3	
Surface water outfall	0	1	67	68	
Pumping station	0	1	19	20	
Foul Sewer	0	0	30	30	
Other	0	0	100	100	
TOTAL	0	2	256	258	
Sewage and Water Other	Cat 1	Cat 2	Cat 3	TOTAL	
Sewer dykes and village drains	0	0	3	3	

Cess pits	0	0	2	2
Others	0	0	2	2
TOTAL	0	0	7	7
Agricultural	Cat 1	Cat 2	Cat 3	TOTAL
Beef cattle	0	3	22	25
Dairy cattle	1	23	128	152
Pigs	1	1	23	25
Poultry	0	1	7	8
Sheep	0	7	52	59
Arable	1	1	37	39
Horticultural	0	0	6	6
Smallholding	1	0	11	12
Stables	0	0	7	7
Kennels	*	*	*	*
Fish Farms	1	0	1	2
Mixed	1	8	25	34
Forestry	0	0	2	2
Others	0	1	35	36
TOTAL	6	45	356	407
Transport	Cat 1	Cat 2	Cat 3	TOTAL
Road	3	13	371	387
Rail	0	1	26	27
Ships/boats	0	2	68	70
Airports/planes	0	0	7	7
Pipelines (long distance only)	0	0	1	1
Other	0	1	15	16
TOTAL	3	17	488	508
Other	Cat 1	Cat 2	Cat 3	TOTAL
Hospital	0	0	8	8
Crown Exempt	0	0	1	1
Domestic/Residential	0	3	148	151
Restaurants/hotels/public houses	0	0	26	26
Contaminated land	1	0	6	7
Schools/educational establishments	1	0	20	21
Scrapyards	0	0	9	9
Other	3	29	563	595
Unknown	3	19	613	635
TOTAL	8	51	1394	1453
	Cat 1	Cat 2	Cat 3	TOTAL
TOTAL ALL PREMISES	25	209	4177	4411
TOTAL CATEGORY 4 INCIDENTS:	1437			
COMPLETED BY: Birgitte Nielsen		DATE:	26/2/98	