

**POLLUTION CONTROL
STATISTICS
MIDLAND REGION 1995**

ENVIRONMENT AGENCY



105649

Forward

The Pollution Control Statistics Report 1995 provides a graphical representation of pollution incident information and Pollution Control work loads for 1995. The data comes from the Region's Pollution Incidents data base and pollution control statistics reports. All the graphs and tables can be obtained in electronic format from Water Quality at Regional Head Office.

Contents

Figures:

- 1 - Total Number of Pollution Incidents 1985-95
- 2 - Distribution of substantiated pollution incidents by source
- 3 - Substantiated pollution incidents by type
- 4 - Distribution of Category 1 incidents by type
- 5 - Agriculture pollution incidents by source where classified
- 6 - Industrial pollution incidents by source where classified
- 7 - Industrial pollution incidents by source
- 8 - Sewage and water industry pollution incidents
- 9 - Transport related pollution incidents by source
- 10 - Other sources of pollution incidents where classified
- 11 - Organic waste pollution incidents by type
- 12 - Oil pollution incident by type of oil
- 13 - Oil pollution incident by type of oil where classified
- 14 - Chemical pollution incidents by type where classified
- 15 - Chemical pollution incidents by type
- 16 - Sewage pollution incidents by type
- 17 - Sewage pollution incidents by type where classified
- 18 - Other types of pollution incidents where classified
- 19 - Number of Pollution Incidents Reported 1979-95
- 20 - Number of Pollution Incidents, 1994/95
- 21 - Pollution Incidents by Area
- 22 - Major Incidents by Area
- 23 - Pollution Incidents - Upper Severn Area 1995
- 24 - Pollution Incidents - Lower Severn Area 1995
- 25 - Pollution Incidents - Lower Trent Area 1995
- 26 - Pollution Incidents - Upper Trent Area 1995
- 27 - Formal warnings 1994-1995
- 28 - Prosecutions 1995
- 29 - Prosecution by Area 1995
- 30 - Call outs by Area
- 31 - Planning Applications
- 32 - Planning Applications by Area
- 33 - Grant Aid Applications by Area
- 34 - Public Register Enquiries by Area
- 35 - Waste Disposal Consultations by Area
- 36 - Consent Applications by Area
- 37 - Numeric Consent Compliance
- 38 - No of Sewage Works Failing Consent Conditions

Appendices:

Pollution Control Statistics - January
Pollution Control Statistics - February
Pollution Control Statistics - March
Pollution Control Statistics - April
Pollution Control Statistics - May
Pollution Control Statistics - June
Pollution Control Statistics - July
Pollution Control Statistics - August
Pollution Control Statistics - September
Pollution Control Statistics - October
Pollution Control Statistics - November
Pollution Control Statistics - December
Upper Trent Pollution Statistics 1995
Lower Trent Pollution Statistics 1995
Upper Severn Pollution Statistics 1995
Lower Severn Pollution Statistics 1995

Total number of pollution incidents in Midlands Region 1985-1995

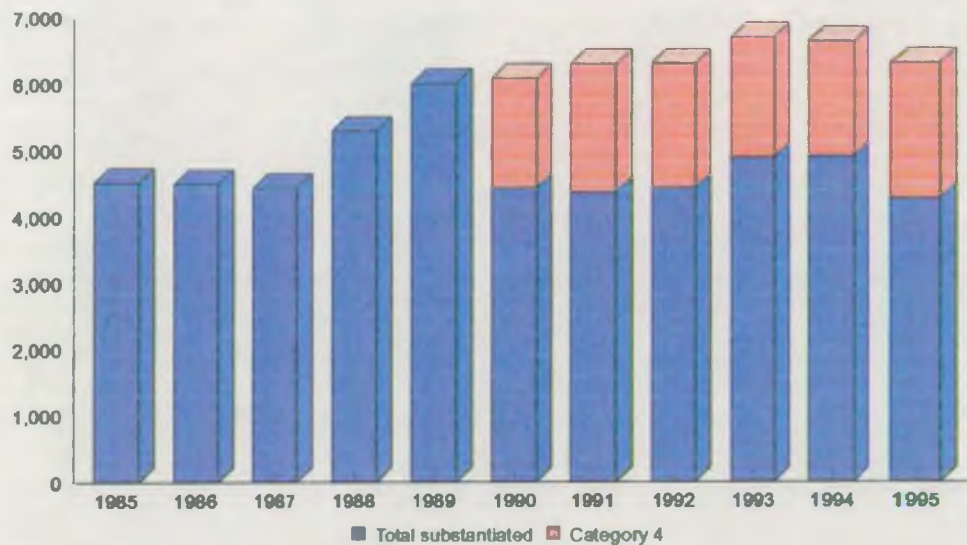


Fig 1

Distribution of substantiated pollution incidents by source in Midlands Region 1995

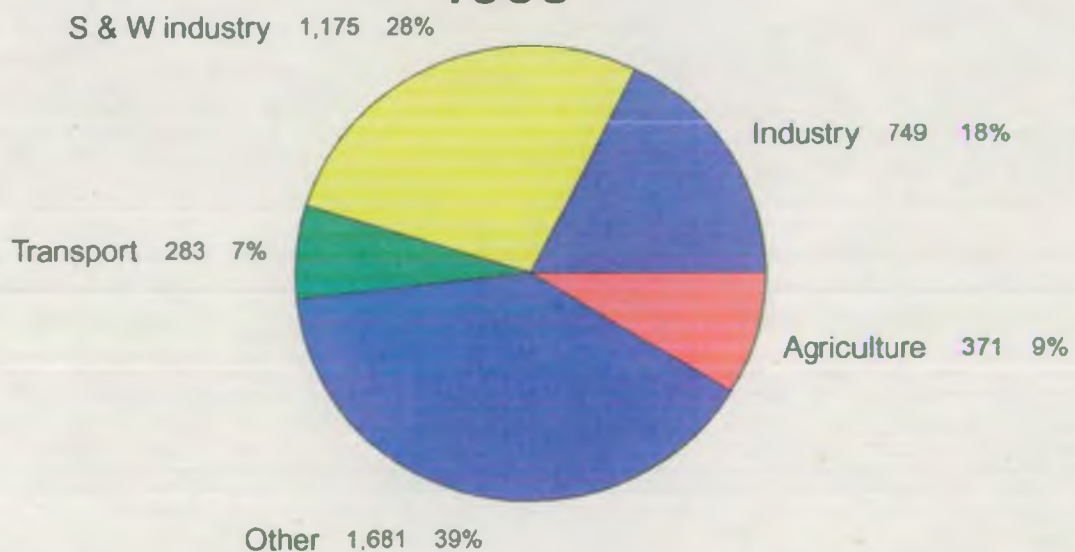


Fig 2

Substantiated pollution incidents by type, Midlands Region 1995

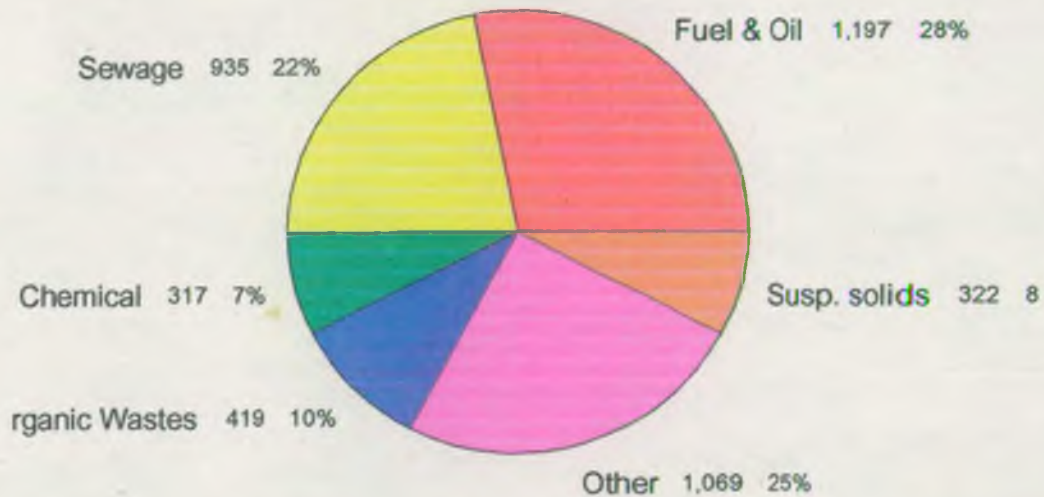


Fig 3

Distribution of Category 1 incidents by type, Midlands Region, 1995

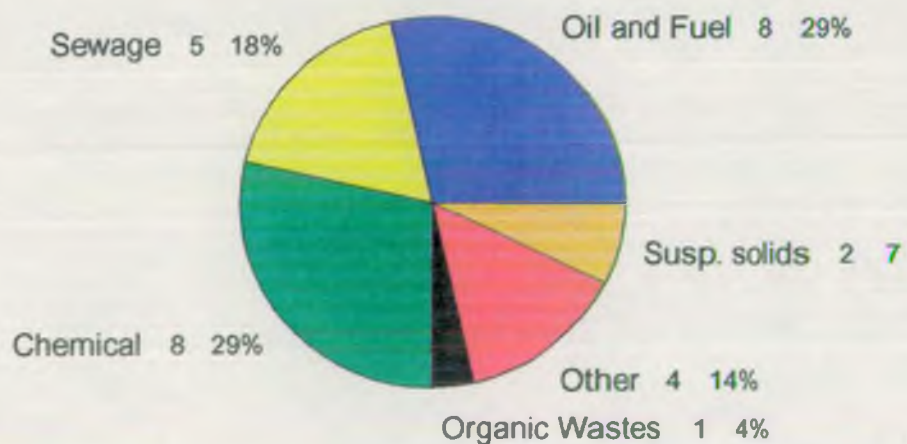


Fig 4

Agricultural pollution incidents by source in Midlands Region 1995

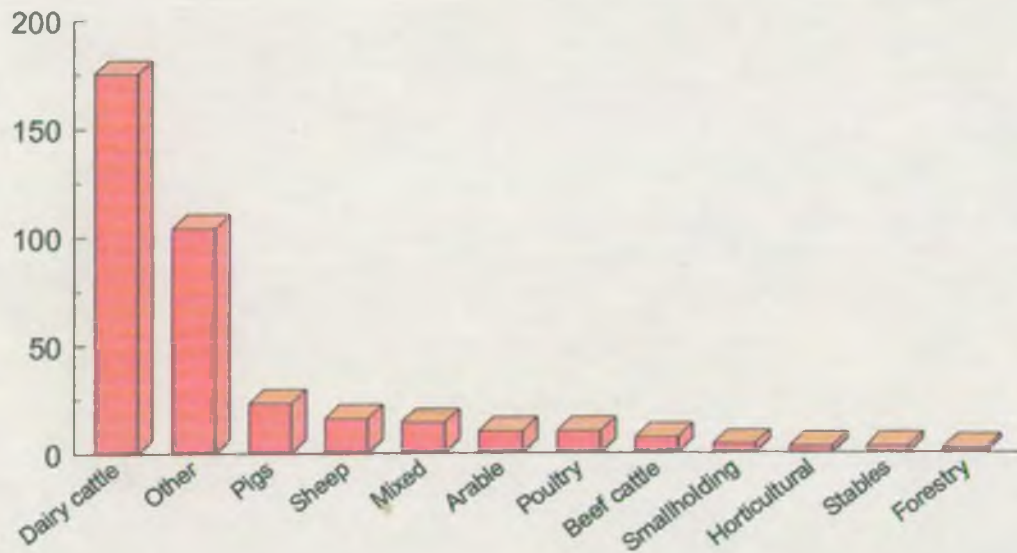


Fig 5

Industrial pollution incidents by source where classified, Midlands Region, 1995

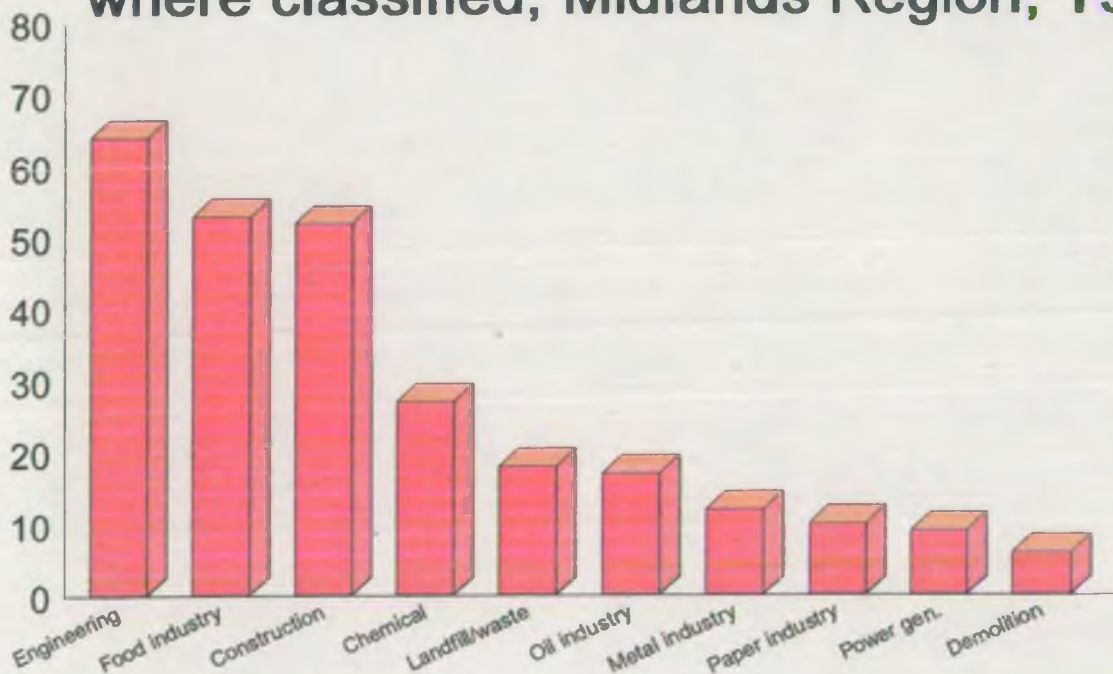


Fig 6

Industrial pollution incidents by source Midlands Region, 1995

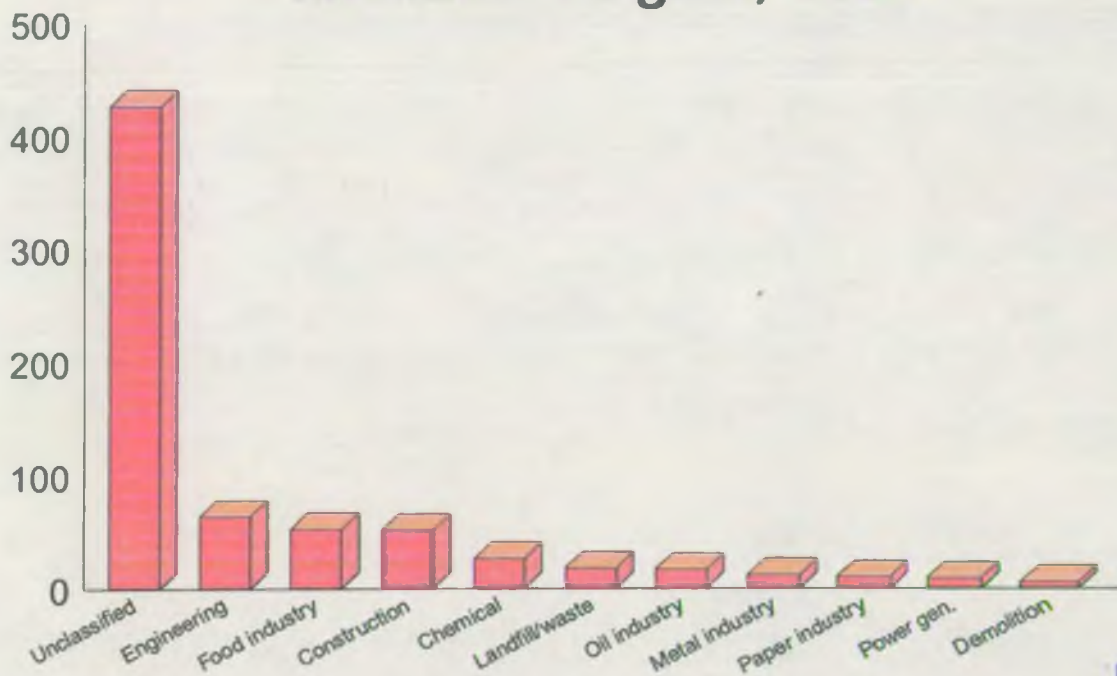
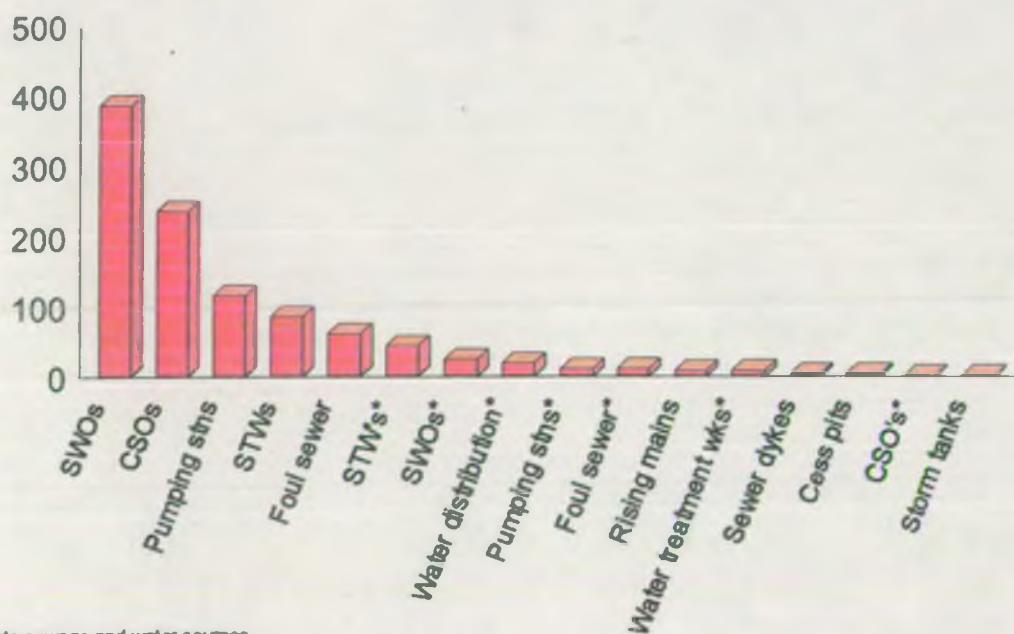


Fig 7

Sewage and water industry pollution incidents, Midlands Region, 1995



*private sewage and water sources

Fig 8

Transport related pollution incidents by source, Midlands Region 1995

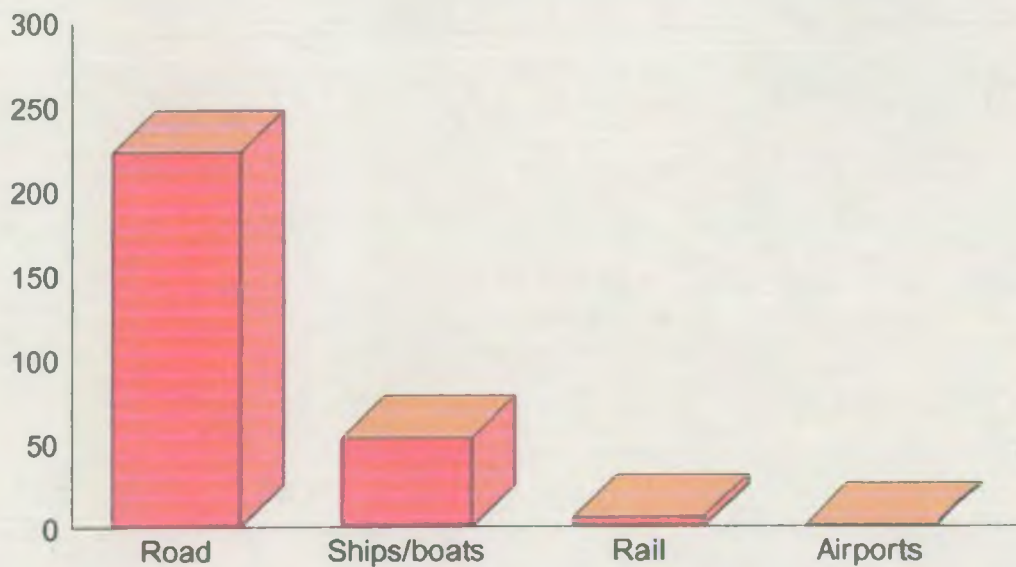


Fig 9

Other sources of pollution incidents, where classified, Midlands Region 1995

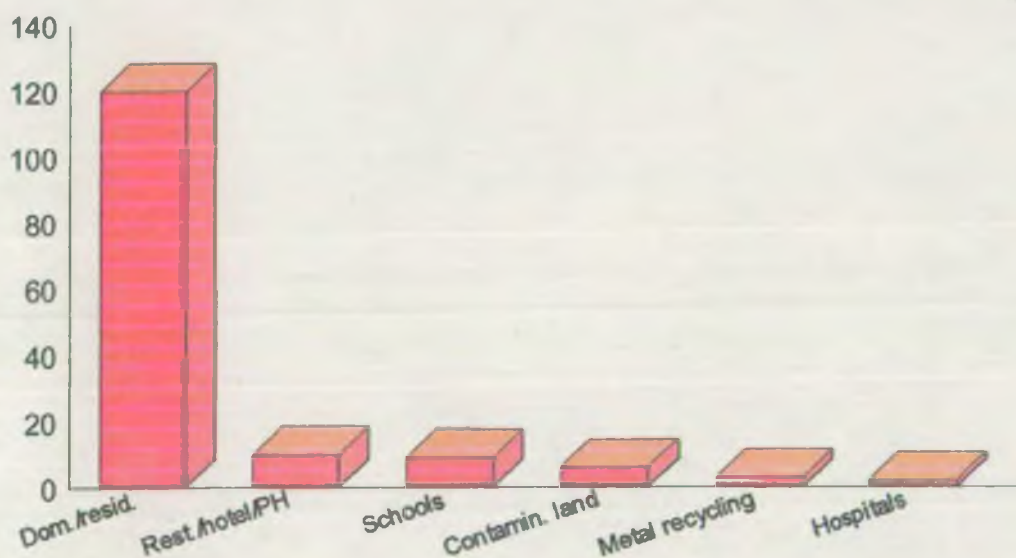


Fig 10

Organic waste pollution incidents by type, where classified, Midlands Region, 1995

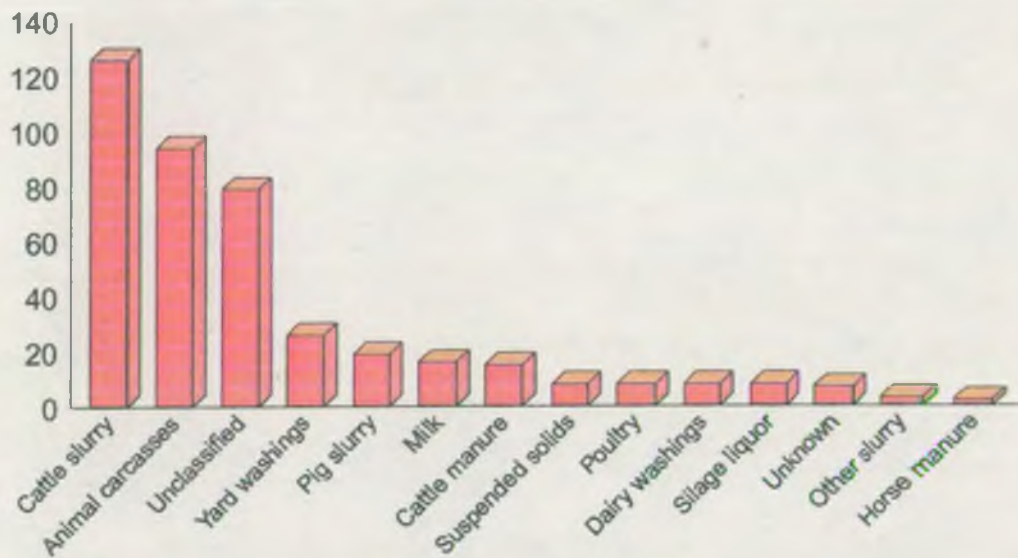


Fig 11

Oil pollution incidents by type of oil, Midlands Region, 1995

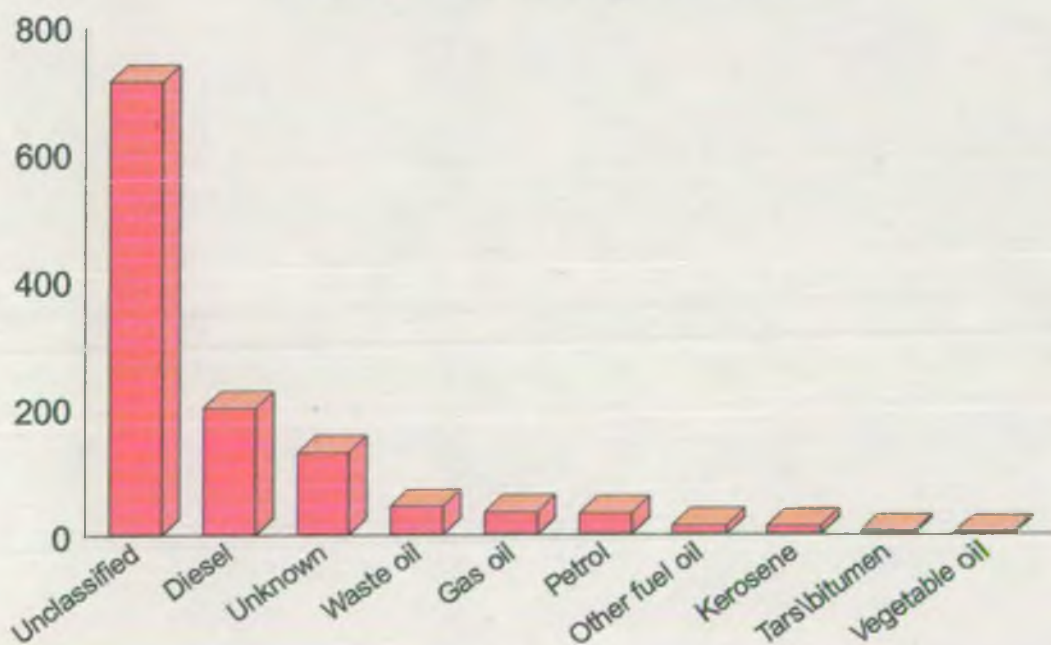


Fig 12

Oil pollution incidents by type of oil, where classified, Midlands Region, 1995

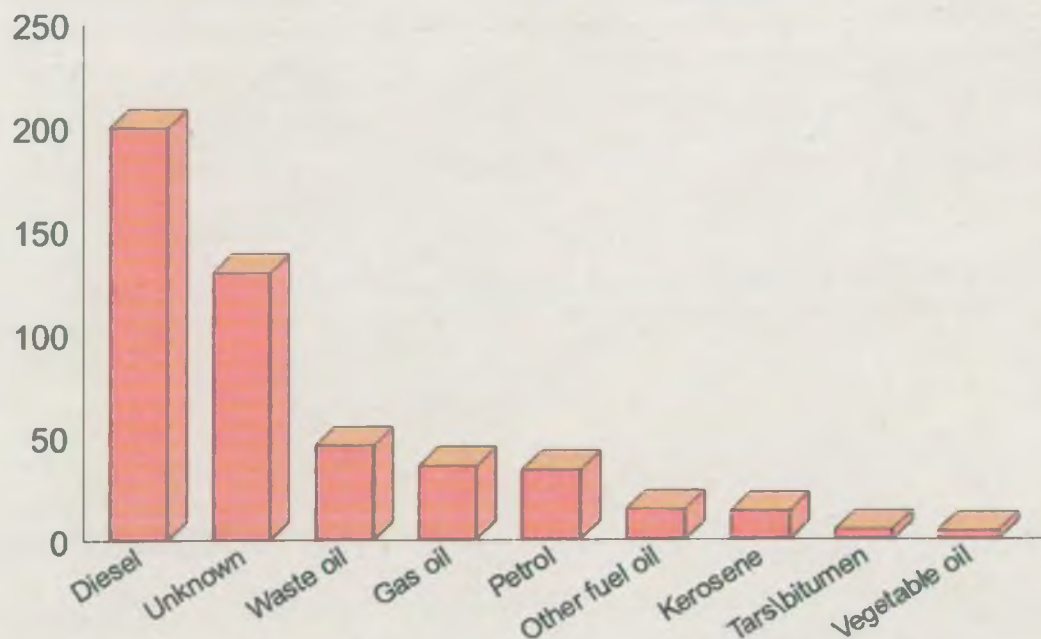


Fig 13

Chemical pollution incidents by type, where classified, Midlands Region 1995

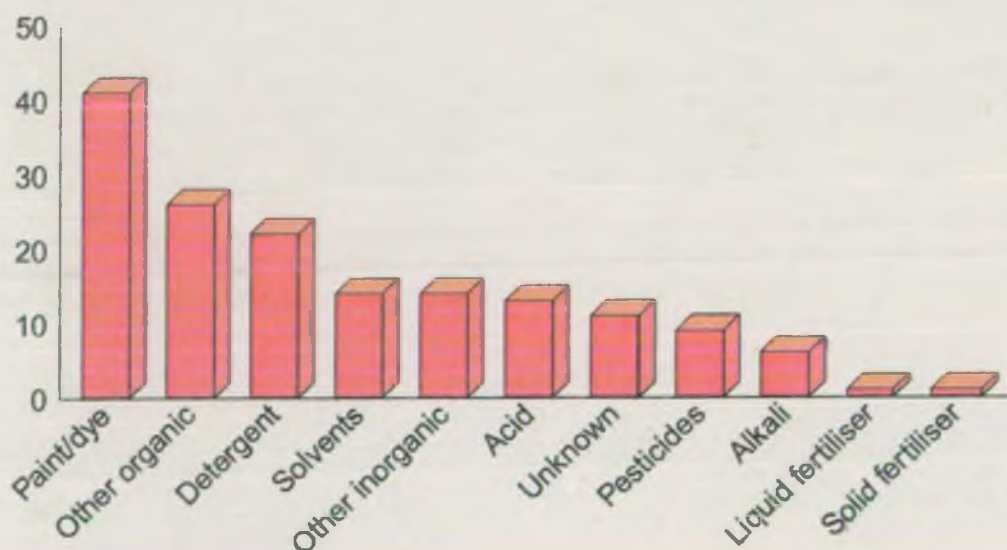


Fig 14

Chemical pollution incidents by type, Midlands Region 1995

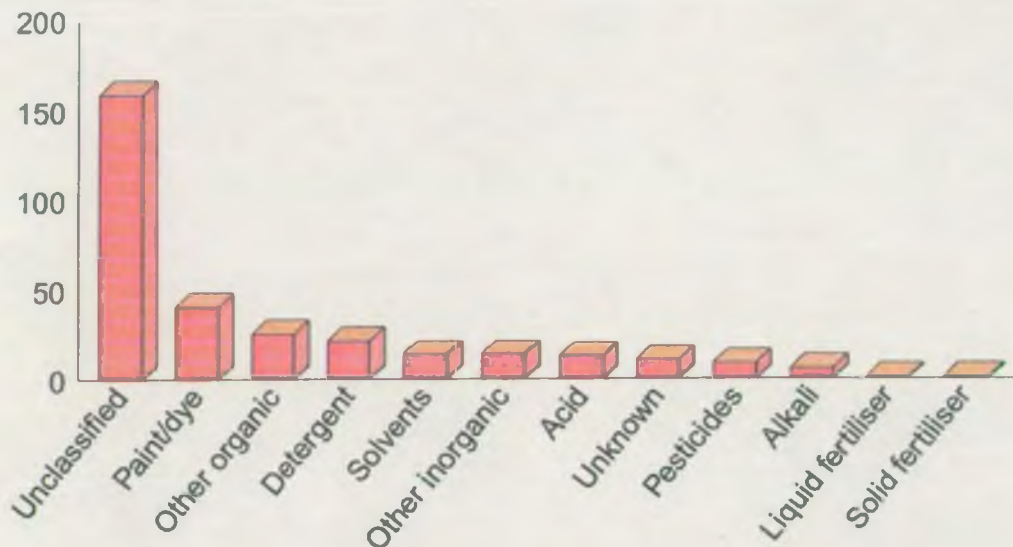


Fig 15

Sewage pollution incidents by type, Midlands Region 1995

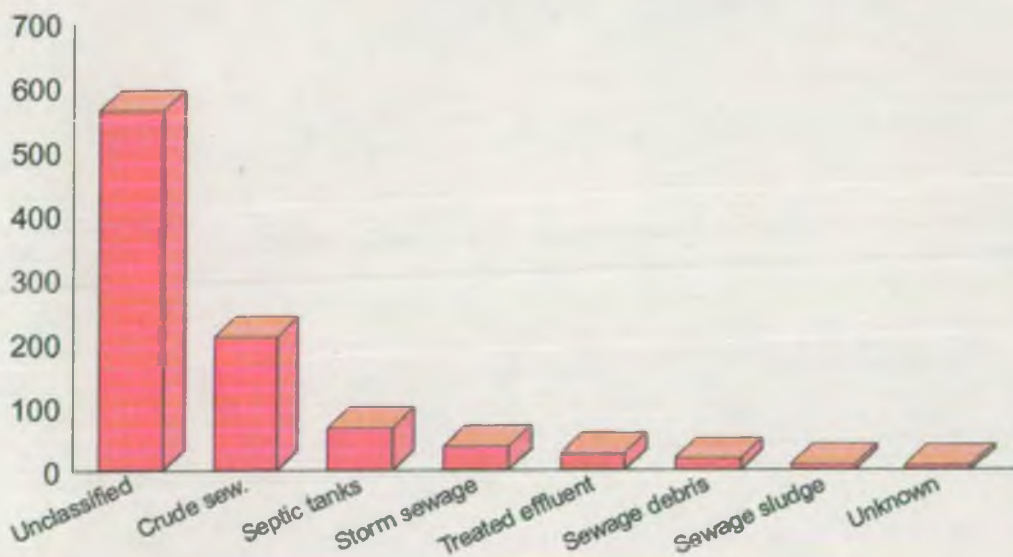


Fig 16

Sewage pollution incidents by type, where classified, Midlands Region 1995

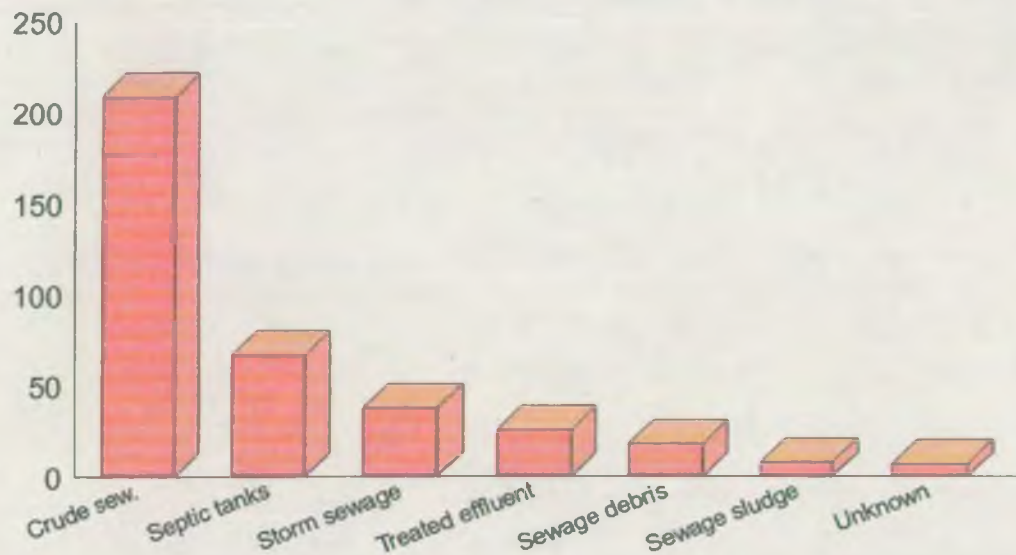


Fig 17

Other types of pollutant, where classified, Midlands Region, 1995

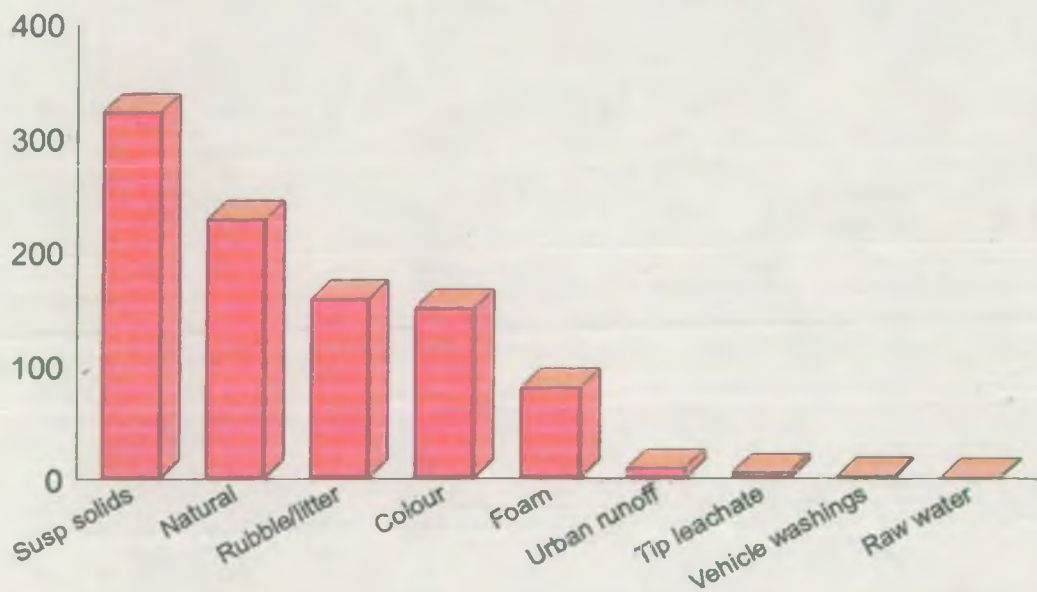


Fig 18

Number of Pollution Incidents Reported 1979-1995 Midlands Region

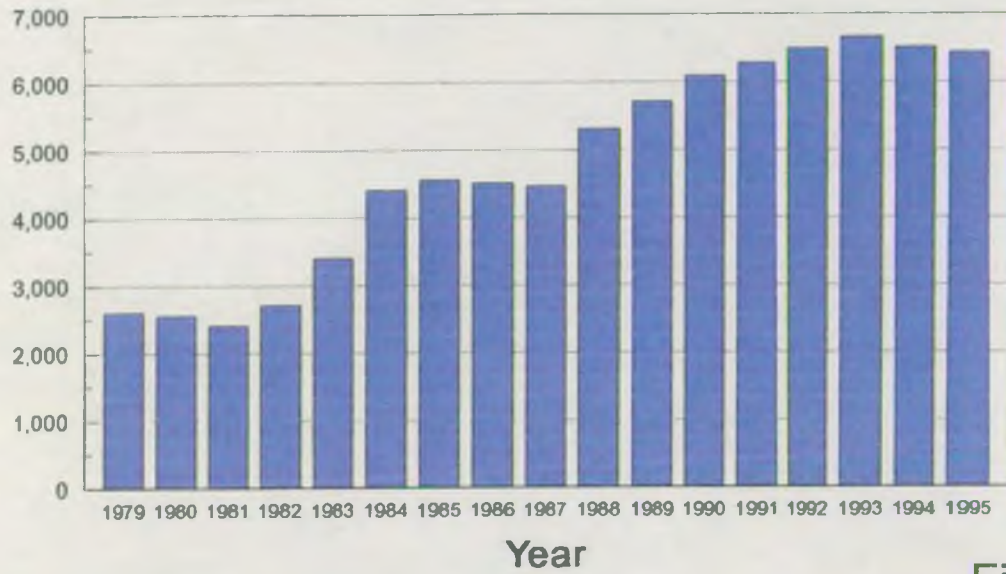


Fig 19

Number of Pollution Incidents Midlands Region 1994-1995

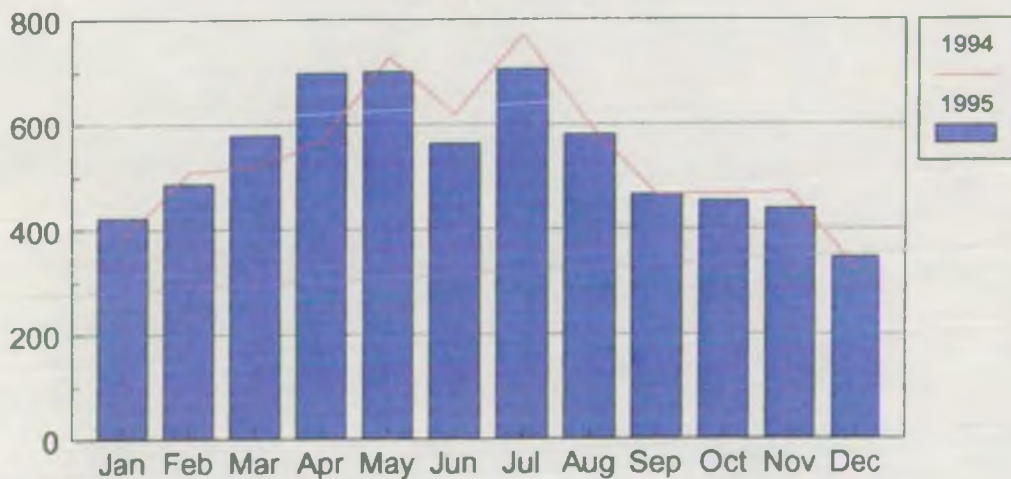


Fig 20

Pollution Incidents By Area

Midlands Region 1995

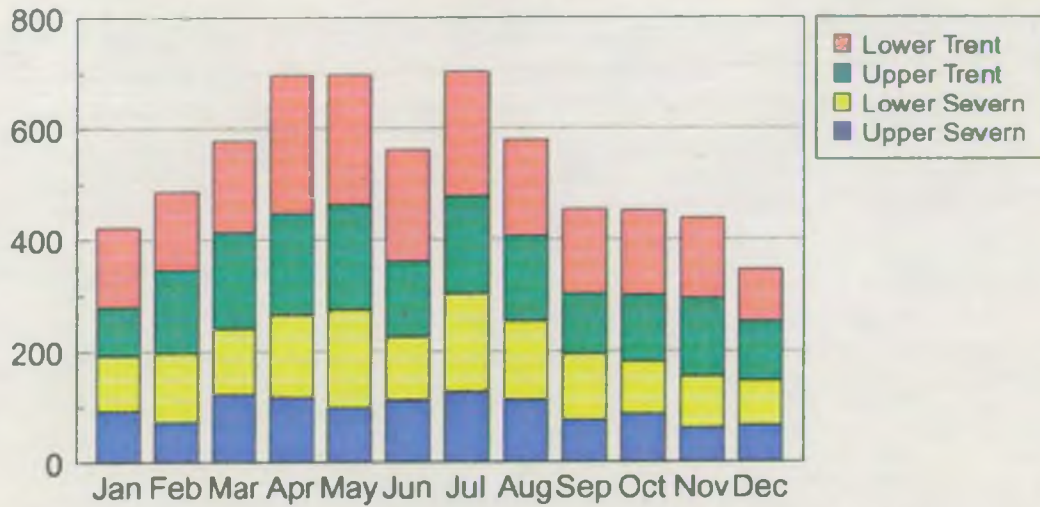


Fig 21

Major Incidents By Area

Midlands Region 1995

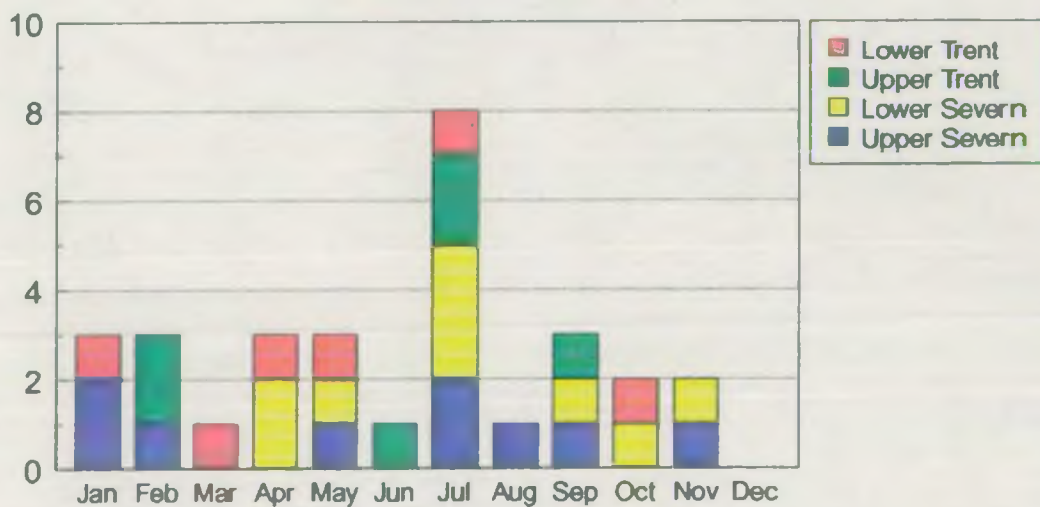
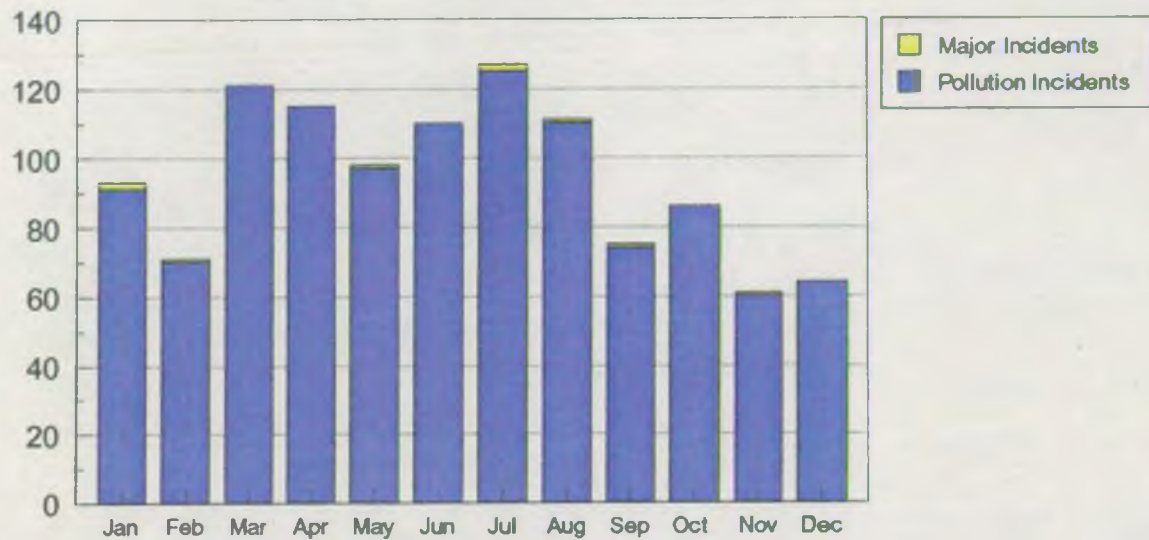


Fig 22

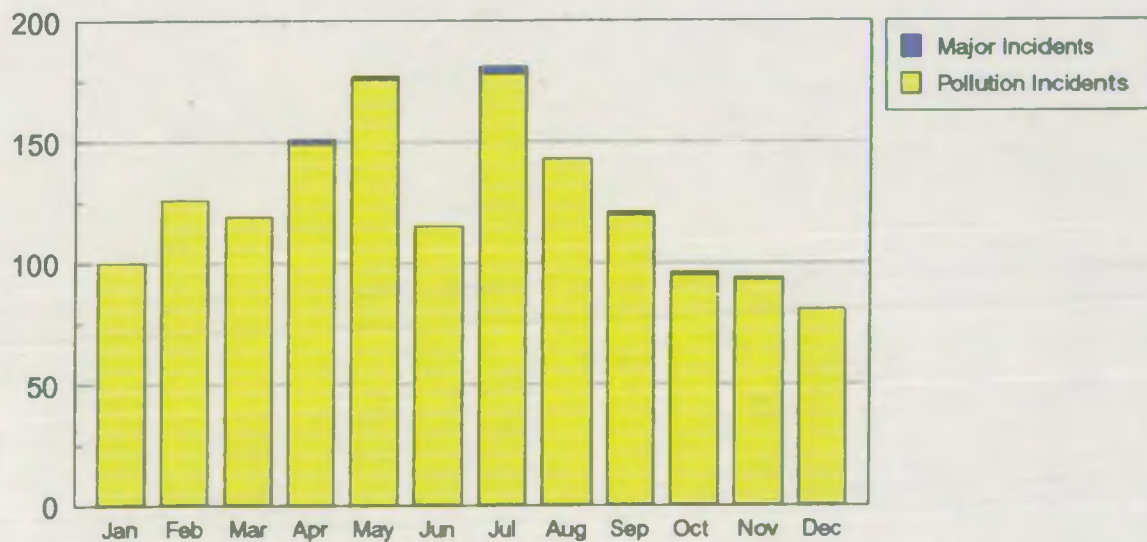
Pollution Incidents - Upper Severn Area 1995



Major incidents data from Pollution Incidents Database

Fig 23

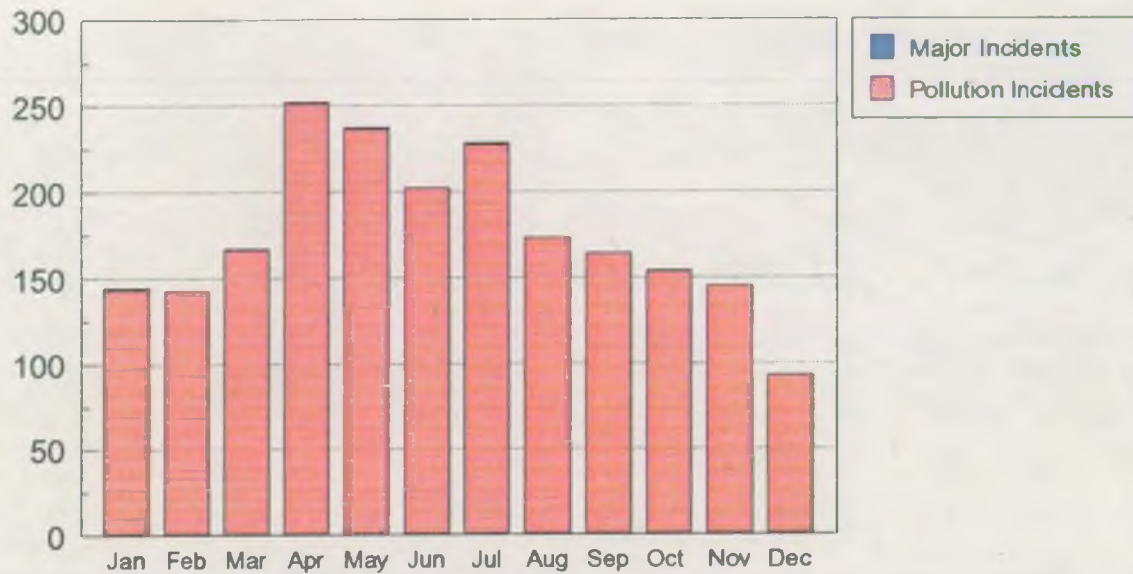
Pollution Incidents - Lower Severn Area 1995



Major incidents data from Pollution Incidents Database

Fig 24

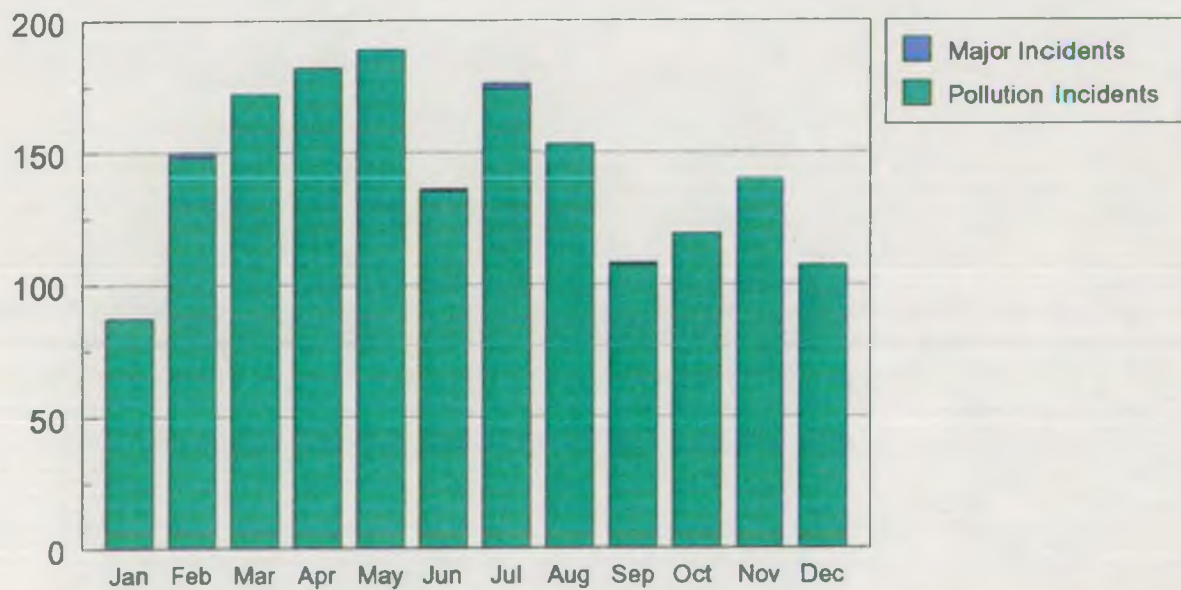
Pollution Incidents - Lower Trent Area 1995



Major incidents data from Pollution Incidents Database

Fig 25

Pollution Incidents - Upper Trent Area 1995



Major incidents data from Pollution Incidents Database

Fig 26

Formal warnings 1994-1995 Midlands Region

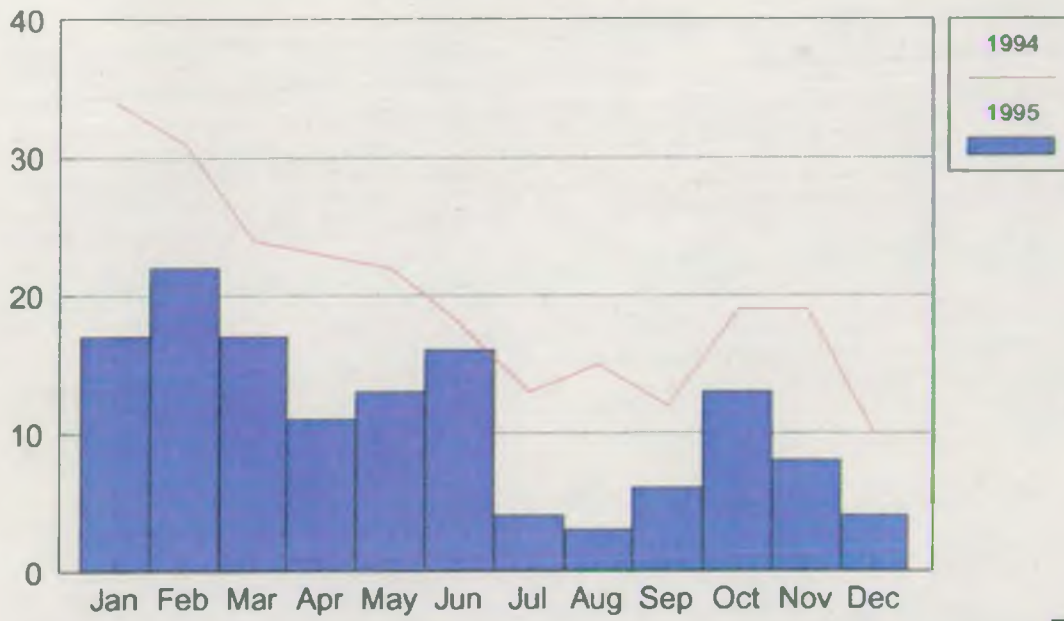


Fig 27

Prosecutions Midlands Region 1995

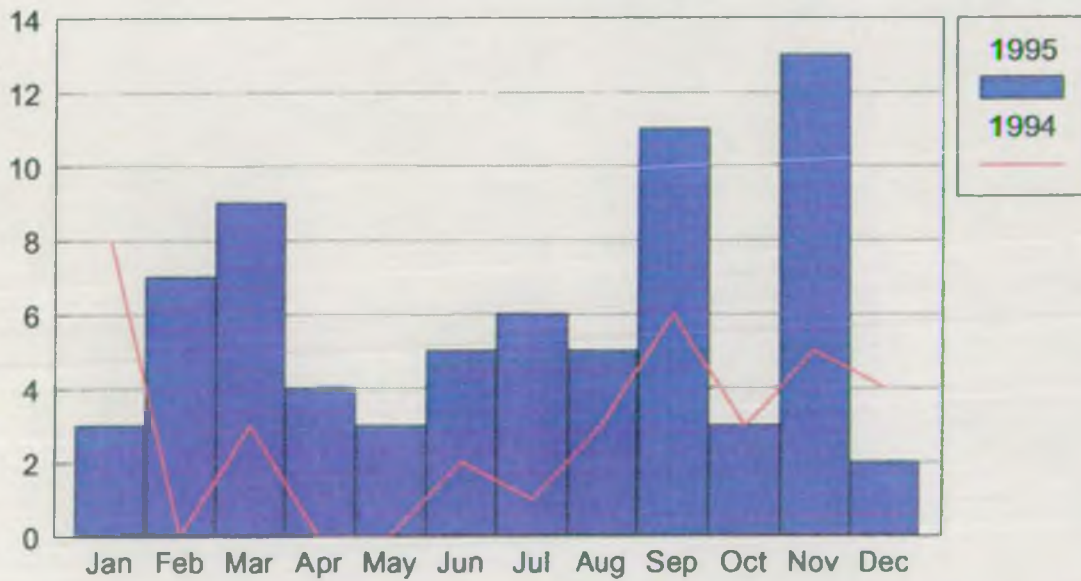


Fig 28

Prosecutions by Area Midlands Region 1995

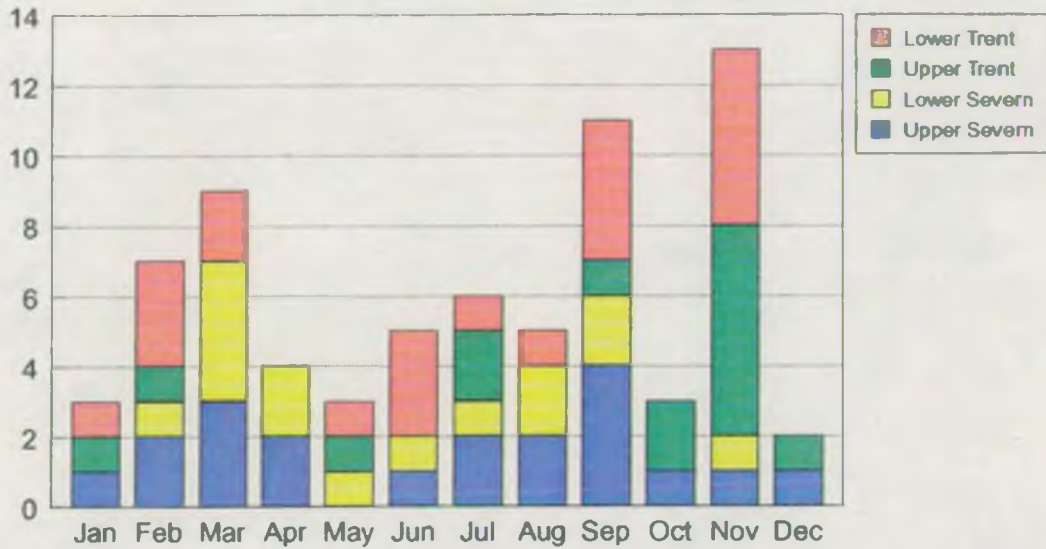
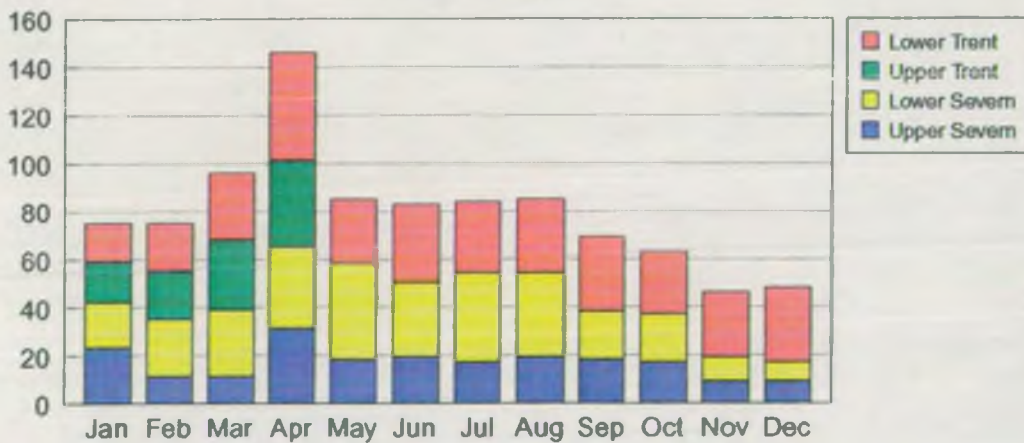


Fig 29

Callouts by Area Midlands Region 1995



UT data not available for May-Dec

Fig 30

Planning Applications Midlands Region 1994-1995

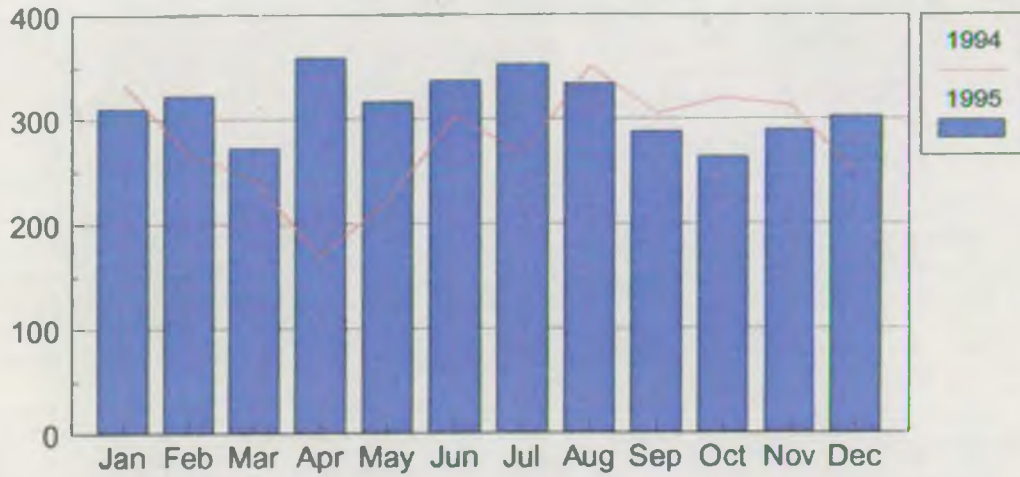


Fig 31

Planning Applications by Area Midlands Region 1995

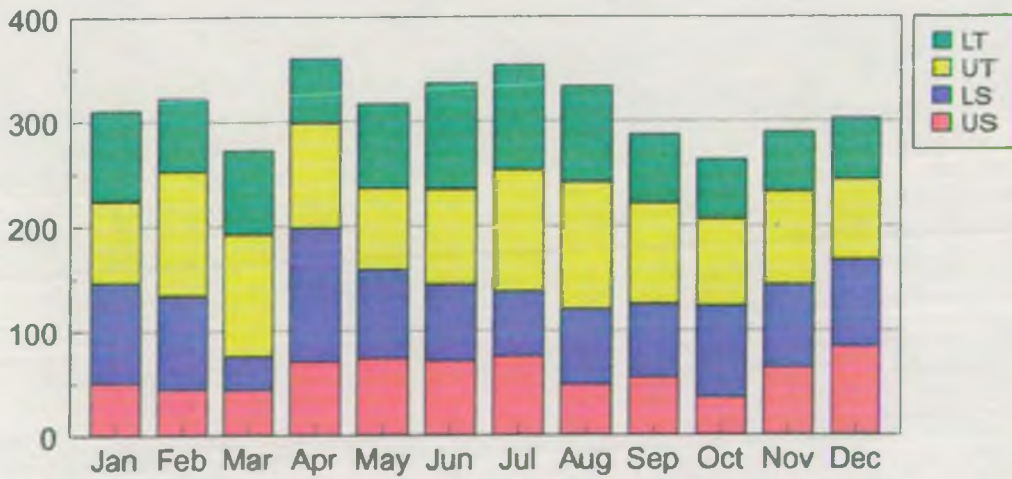


Fig 32

Grant Aid Applications by Area Midland Region 1995

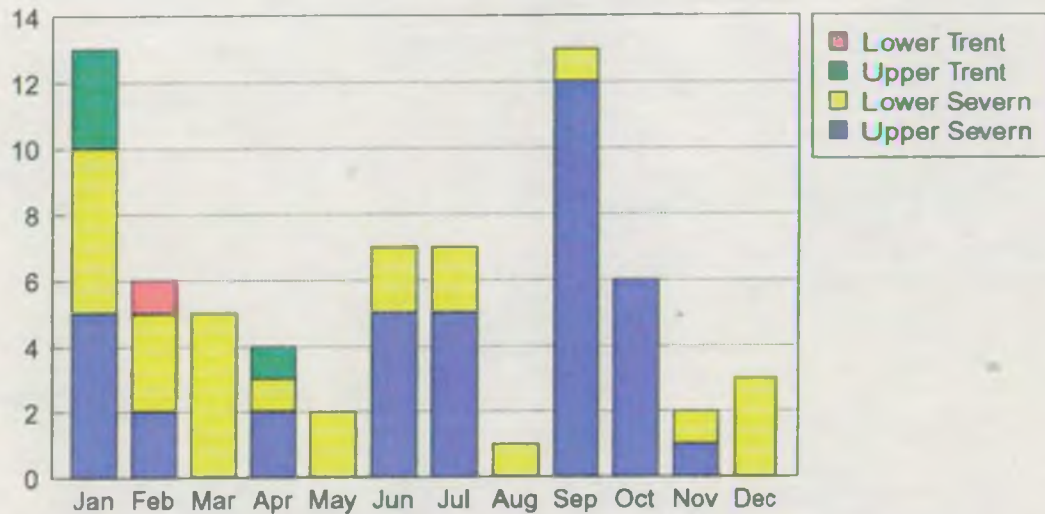


Fig 33

Public Register Enquiries by Area Midlands Region 1995

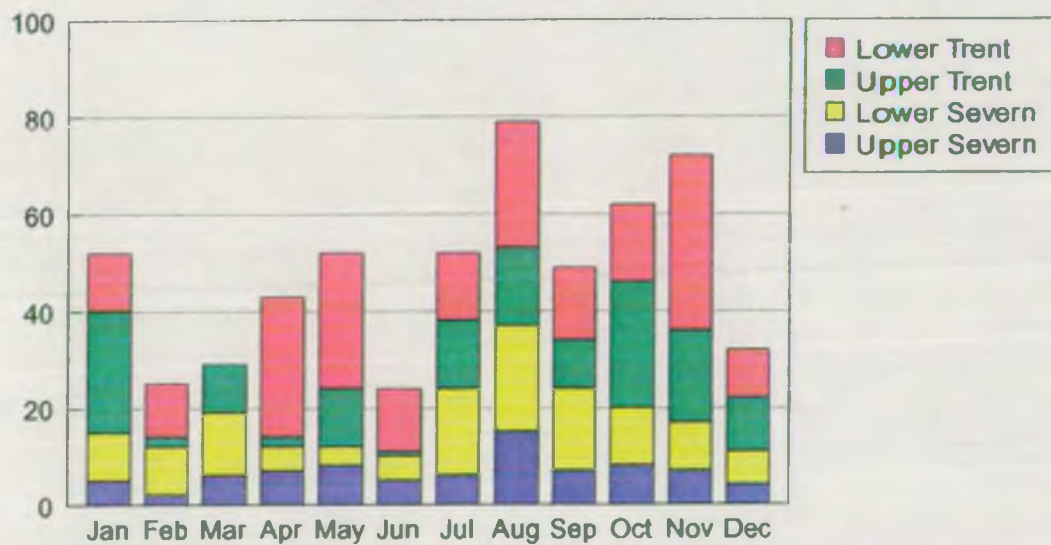
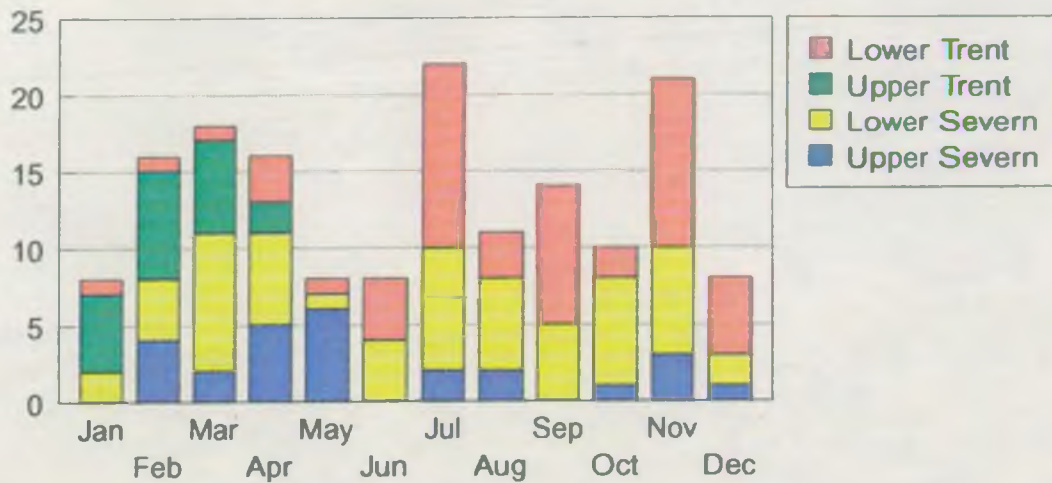


Fig 34

Waste Disposal Consultations by Area Midlands Region 1995



UT data not available for May-Dec

Fig 35

Consent Applications by Area Midlands Region 1995

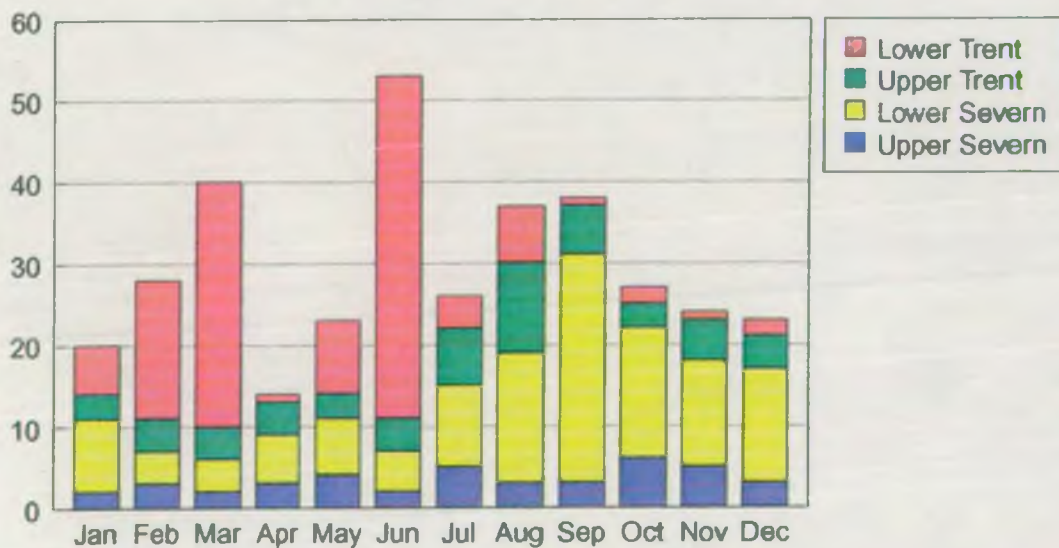


Fig 36

Numeric Consent Compliance

Midlands Region 1995

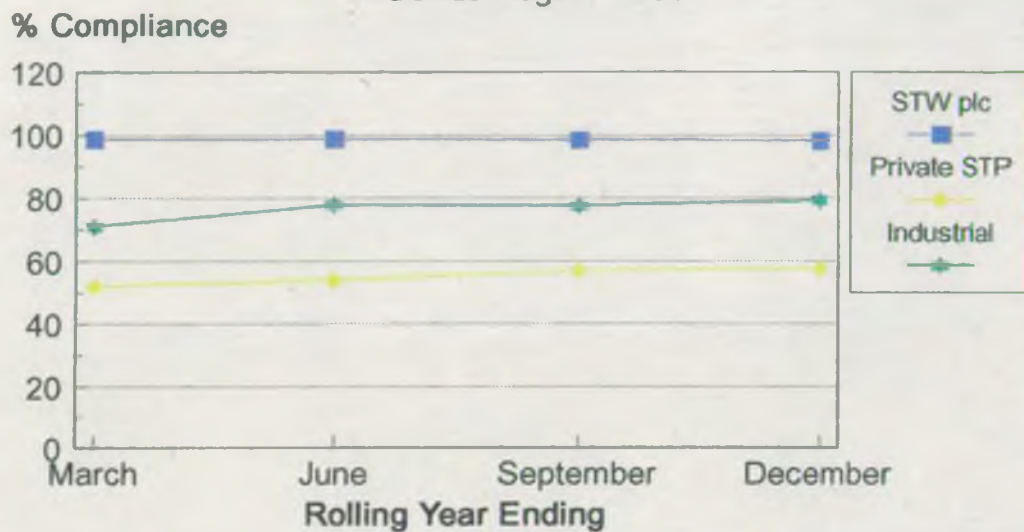


Fig 37

No. of Sewage Works Failing Consent Conditions

Midlands Region 1995

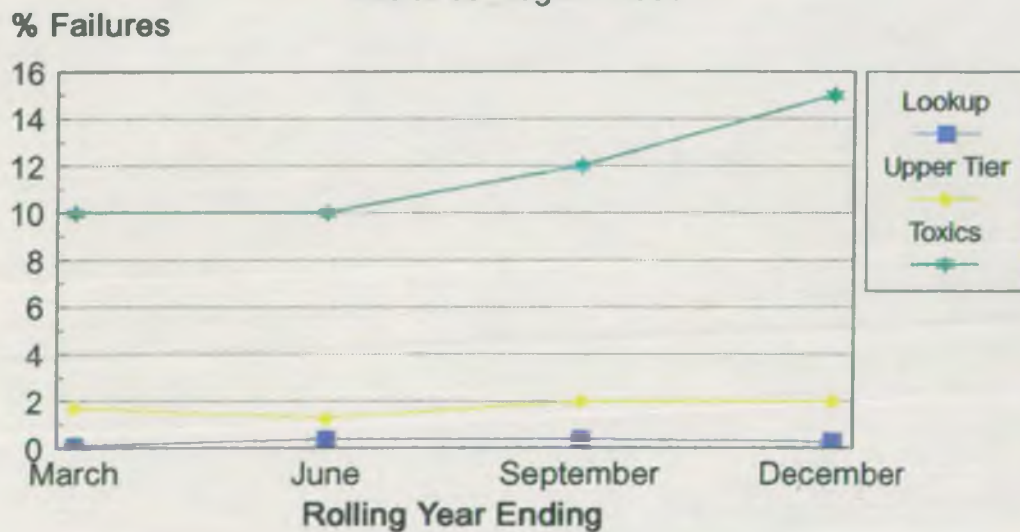


Fig 38

Pollution Control Statistics January 95

Categories	US	LS	UT	LT	TOTAL
Pollution Incidents	91	100	87	143	421
Call outs	23	19	17	16	75
Consent applications	2	9	3	6	20
Planning applications	50	96	78	86	310
Grant in aid applications	5	5	3	0	13
Waste disposal consultations	0	2	5	1	8
Register enquiries	5	10	25	12	52
Legal samples	6	4	4	4	18
Formal warnings	9	3	4	1	17
Formal cautions		1			1
Prosecutions	1	0	1	1	3

Inspections

Private STWs	74	107		50	231
Severn Trent Water plc STWs	28	26		94	148
STW'S Total	102	133	34	144	379
Descriptive	0		2		2
Sewerage	39	69	118	208	434
Industrials including fish farms	131	111	24	276	542
Contaminated land	10	13	11	17	51
Waste disposal	13	11	75	22	121
Farms	42	38	3	37	120
Rivers	178	106	5	456	745
Catchment inventories					0
Other	26	26		29	81

UT STW Total =Private STWs & Severn Trent Water plc STWs

UT Farms =Farm waste + Farm waste management plans

Pollution Control Statistics February 95

Categories	US	LS	UT	LT	TOTAL
Pollution Incidents	70	126	148	142	486
Call outs	11	24	20	20	75
Consent applications	3	4	4	17	28
Planning applications	44	89	119	70	322
Grant in aid applications	2	3	0	1	6
Waste disposal consultations	4	4	7	1	16
Register enquiries	2	10	2	11	25
Legal samples	3	1	9	1	14
Formal warnings	4	3	12	3	22
Formal cautions		1		0	1
Prosecutions	2	1	1	3	7

Inspections

Private STWs	98	67		34	199
Severn Trent Water plc STWs	55	88		90	233
STW's Total	153	155	40	124	432
Descriptive	2		4		6
Sewerage	61	37	28	225	351
Industrials including fish farms	159	116	116	300	691
Contaminated land	9	14	13	22	58
Waste disposal	20	7	21	28	76
Farms	51	38	9	51	149
Rivers	255	124	99	484	962
Catchment inventories					0
Other	30	30	0	24	84

Pollution Control Statistics March 95

Categories	US	LS	UT	LT	TOTAL
Pollution Incidents	121	119	172	166	578
Call outs	11	28	29	28	96
Consent applications	2	4	4	30	40
Planning applications	43	32	117	80	272
Grant in aid applications	0	5	0	0	5
Waste disposal consultations	2	9	6	1	18
Register enquiries	6	13	10		29
Legal samples	7	1	7	8	23
Formal warnings	4	2	9	2	17
Formal cautions		0		2	2
Prosecutions	3	4	0	2	9

Inspections

Private STWs	125	132		65	322
Severn Trent Water plc STWs	41	24		88	153
STW's total	166	156	46	153	475
Descriptive	10		5		15
Sewerage	40	42	115	282	479
Industrials including fish farms	146	115	19	323	603
Contaminated land	17	13	13	9	52
Waste disposal	17	4	28	28	77
Farms	73	40	9	82	204
Rivers	258	123		544	925
Catchment inventories					
Other	26	21		36	83

Pollution Control Statistics April 95

Categories	US	LS	UT	LT	TOTAL
Pollution Incidents	115	149	182	251	697
Call outs	31	34	36	45	146
Consent applications	3	6	4	1	14
Planning applications	70	128	100	61	359
Grant in aid applications	2	1	1	0	4
Waste disposal consultations	5	6	2	3	16
Register enquiries	7	5	2	29	43
Legal samples	1	2	14	3	20
Formal warnings	7	2	1	1	11
Formal cautions		1			1
Prosecutions	2	2	0	0	4

Inspections

Private STWs	118	64		38	220
Severn Trent Water plc STWs	55	33		82	170
STW's total	173	97	34	120	390
Descriptive	7		0		7
Sewerage	64	58	57	229	408
Industrials including fish farms	146	105	110	216	577
Contaminated land	12	13	11	4	40
Waste disposal	10	16	11	21	58
Farms	51	25	13	51	140
Rivers	249	92	70	545	956
Catchment inventories	0	0	3	0	3
Other	46	30	7	29	112

Pollution Control Statistics May 1995

Categories	US	LS	UT	LT	TOTAL
Pollution Incidents	97	176	189	236	698
Call outs	18	40		27	85
Consent applications	4	7	3	9	23
Planning applications	73	85	78	80	316
Grant in aid applications	0	2	0	0	2
Waste disposal consultations	6	1		1	8
Register enquiries	8	4	12	28	52
Legal samples	4	3	2	4	13
Formal warnings	7	4	1	1	13
Formal cautions		1			1
Prosecutions	0	1	1	1	3

Inspections

Private STWs	153	89		46	288
Severn Trent Water plc STWs	58	29		79	166
STW's total	211	118	29	125	483
Descriptive	8		5		13
Sewerage	79	47	22	217	365
Industrials including fish farms	128	89	29	206	452
Contaminated land	19	10	3	7	39
Waste disposal	17	8	4	19	48
Farms	74	26	1	27	128
Rivers	315	176	40	504	1035
Catchment inventories			4		4
Other	44	56	0	28	128

Pollution Control Statistics June 95

Categories	US	LS	UT	LT	TOTAL
Pollution Incidents	110	115	135	202	562
Call outs	19	31		33	83
Consent applications	2	5	4	42	53
Planning applications	71	73	91	101	336
Grant in aid applications	5	2	0	0	7
Waste disposal consultations	0	4		4	8
Register enquiries	5	5	1	13	24
Legal samples	6	5	6	2	19
Formal warnings	14	1	0	1	16
Formal cautions					0
Prosecutions	1	1	0	3	5

Inspections

Private STWs	138	93		72	303
Severn Trent Water plc STWs	66	34		141	241
STW's total	204	127	28	213	544
Descriptive	5		8		13
Sewerage	60	62	10	189	321
Industrials including fish farms	119	85	44	277	525
Contaminated land	12	12	1	9	34
Waste disposal	16	5	6	22	49
Farms	68	24	4	39	135
Rivers	332	149	31	587	1099
Catchment inventories			10		10
Other	47	49	0	46	142

Pollution Control Statistics July 95

Categories	US	LS	UT	LT	TOTAL
Pollution Incidents	125	178	174	227	704
Call outs	17	37		30	84
Consent applications	5	10	7	4	26
Planning applications	75	62	116	100	353
Grant in aid applications	5	2	0	0	7
Waste disposal consultations	2	8		12	22
Register enquiries	6	18	14	14	52
Legal samples	1	1	10	2	14
Formal warnings	2	-1	1	0	4
Formal cautions	0	0	0	0	0
Prosecutions	2	1	2	1	6

Inspections

Private STWs	118	98		36	252
Severn Trent Water plc STWs	44	23		109	176
STW's total	162	121	17	145	428
Descriptive	4		8		12
Sewerage	70	54	29	184	337
Industrials including fish farms	176	82	15	205	478
Contaminated land	22	8	2	9	41
Waste disposal	14	10	8	27	59
Farms	51	17	5	33	106
Rivers	436	159	33	634	1262
Catchment inventories			2		2
Other	48	36	0	40	124

Pollution Control Statistics August 95

	US	LS	UT	LT	TOTAL
Pollution Incidents	110	143	153	173	579
Call outs	19	35		31	85
Consent applications	3	16	11	7	37
Planning applications	48	72	121	92	333
Grant in aid applications	0	1	0	0	1
Waste disposal consultations	2	6		3	11
Register enquiries	15	22	16	26	79
Legal samples	7	2	3	2	14
Formal warnings	2	0	1	0	3
Formal cautions				0	0
Prosecutions	2	2	0	1	5

Inspections

Private STWs	141	102		45	288
Severn Trent Water plc STWs	79	33		110	222
STW's total	220	135	23	155	510
Descriptive	13		2		15
Sewerage	50	71	19	202	342
Industrials including fish farms	124	107	34	213	478
Contaminated land	13	6	4	5	28
Waste disposal	17	4	9	20	50
Farms	66	17	7	24	114
Rivers	445	137	49	635	1266
Catchment inventories			6		6
Other	62	42	0	23	127

Pollution Control Statistics September 95

Categories	US	LS	UT	LT	TOTAL
Pollution Incidents	74	120	107	164	465
Call outs	18	20		31	69
Consent applications	3	28	6	1	38
Planning applications	55	70	96	66	287
Grant in aid applications	12	1	0	0	13
Waste disposal consultations	0	5		9	14
Register enquiries	7	17	10	15	49
Legal samples	1	1	6	1	9
Formal warnings	3	1	0	2	6
Formal cautions				0	0
Prosecutions	4	2	1	4	11

Inspections

Private STWs	97	133		47	277
Severn Trent Water plc STWs	39	25		101	165
STW's total	136	158	18	148	442
Descriptive	6		10		16
Sewerage	72	57	23	177	329
Industrials including fish farms	116	142	41	249	548
Contaminated land	17	11	2	19	49
Waste disposal	16	9	6	25	56
Farms	45	17	2	27	91
Rivers	407	15	41	530	993
Catchment inventories			2		2
Other	37	44	0	21	102

Pollution Control Statistics October 95

Categories	US	LS	UT	LT	TOTAL
Pollution Incidents	86	95	119	153	453
Call outs	17	20		26	63
Consent applications	6	16	3	2	27
Planning applications	36	87	83	57	263
Grant in aid applications	6	0	0	0	6
Waste disposal consultations	1	7		2	10
Register enquiries	8	12	26	16	62
Legal samples	2	1	1	2	6
Formal warnings	10	0	2	1	13
Formal cautions				0	0
Prosecutions	1	0	2	0	3

Inspections

Private STWs	105	161		51	317
Severn Trent Water plc STWs	53	19		124	196
STW's total	158	180	5	175	513
Descriptive	11		2		13
Sewerage	53	59	19	220	351
Industrials including fish farms	161	127	26	285	599
Contaminated land	11	11	0	23	45
Waste disposal	10	8	3	25	46
Farms	57	22	1	33	113
Rivers	257	136	14	619	1026
Catchment inventories					
Other	49	46	0	17	112

Pollution Control Statistics November 1995

Categories	US	LS	UT	LT	TOTAL
Pollution Incidents	60	93	140	145	438
Call outs	9	10		27	46
Consent applications	5	13	5	1	24
Planning applications	64	79	89	57	289
Grant in aid applications	1	1	0	0	2
Waste disposal consultations	3	7		11	21
Register enquiries	7	10	19	36	72
Legal samples	4	3	2	6	15
Formal warnings	5	2	0	1	8
Formal cautions		1			1
Prosecutions	1	1	6	5	13

Inspections

Private STWs	167	119	33	56	375
Severn Trent Water plc STWs	86	51		107	244
STW's total	334	238	66	112	750
Descriptive	23		2		25
Sewerage	98	46	60	237	441
Industrials including fish farms	191	103	56	255	605
Contaminated land	17	15	2	20	54
Waste disposal	33	15	7	24	79
Farms	79	30	1	27	137
Rivers	409	122	63	563	1157
Catchment inventories			0		0
Other	38	51	0	40	129

Pollution Control Statistics December 95

Categories	US	LS	UT	LT	TOTAL
Pollution Incidents	64	81	107	93	345
Call outs	9	8		31	48
Consent applications	3	14	4	2	23
Planning applications	84	83	77	58	302
Grant in aid applications	0	3	0	0	3
Waste disposal consultations	1	2		5	8
Register enquiries	4	7	11	10	32
Legal samples	2	1	2	0	5
Formal warnings	2	1	1	0	4
Formal cautions				0	
Prosecutions	1	0	1	0	2

Inspections

Private STWs	158	67		29	254
Severn Trent Water plc STWs	63	39		120	222
STW's total	221	106	29	149	476
Descriptive	23		10		33
Sewerage	74	37	28	156	295
Industrials including fish farms	173	83	84	213	553
Contaminated land	11	12	10	18	51
Waste disposal	19	9	10	19	57
Farms	45	18	0	19	82
Rivers	280	135	53	531	999
Catchment inventories			1		1
Other	31	30	0	23	84